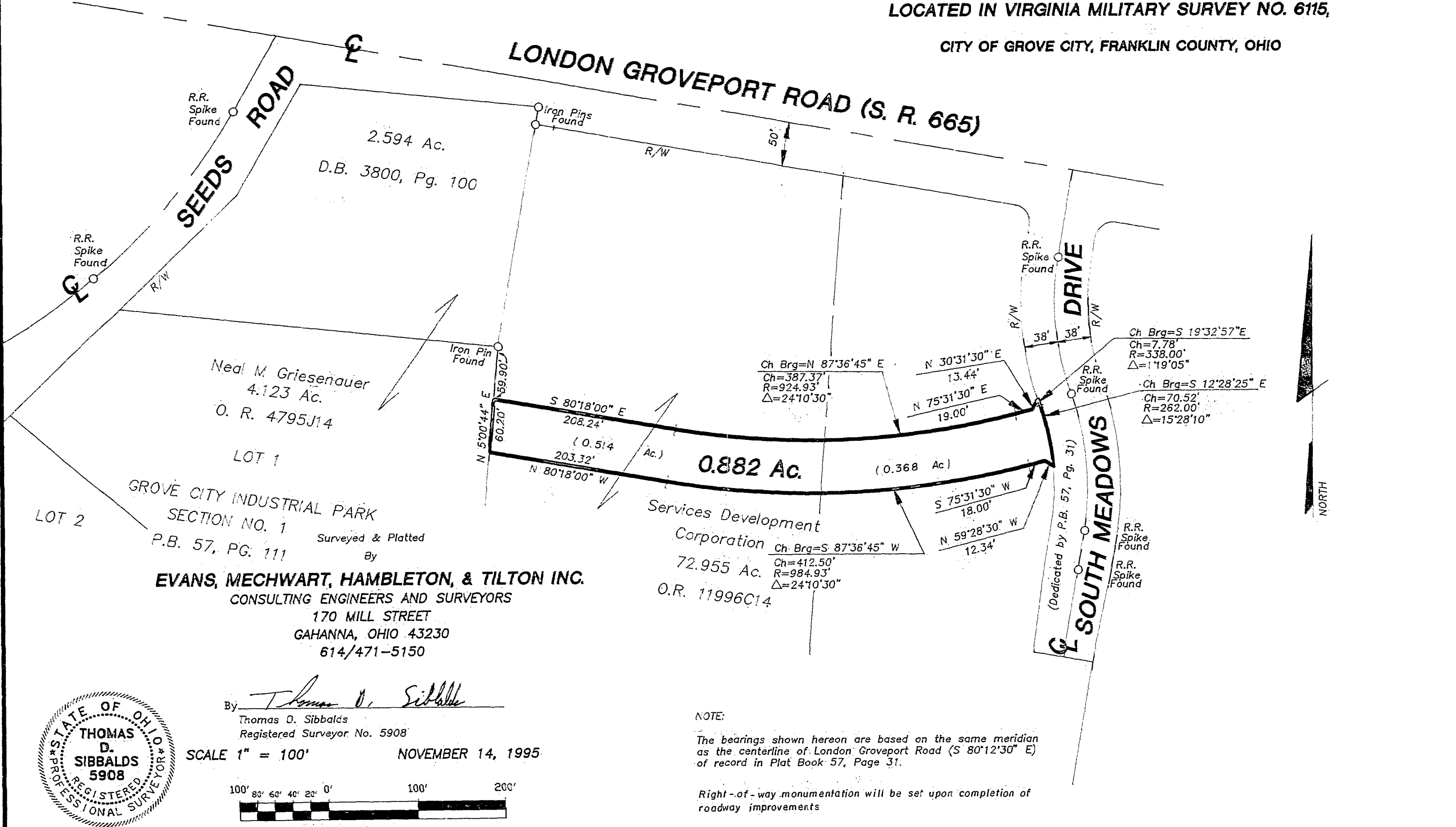


**SURVEY OF ACREAGE PARCEL**  
**LOCATED IN VIRGINIA MILITARY SURVEY NO. 6115,**  
**CITY OF GROVE CITY, FRANKLIN COUNTY, OHIO**



2.594 Ac.  
 D.B. 3800, Pg. 100

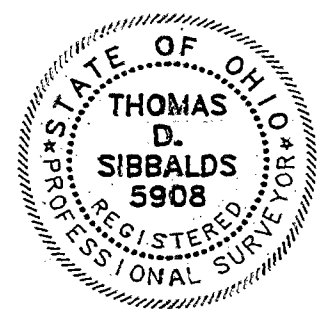
Neal M. Griesenauer  
 4.123 Ac.  
 O. R. 4795J14

LOT 1

LOT 2  
 GROVE CITY INDUSTRIAL PARK  
 SECTION NO. 1  
 P.B. 57, PG. 111

Surveyed & Platted  
 By  
**EVANS, MECHWART, HAMBLETON, & TILTON INC.**  
 CONSULTING ENGINEERS AND SURVEYORS  
 170 MILL STREET  
 GAHANNA, OHIO 43230  
 614/471-5150

Services Development  
 Corporation  
 72.955 Ac.  
 O.R. 11996C14



By Thomas D. Sibbalds  
 Thomas D. Sibbalds  
 Registered Surveyor No. 5908

SCALE 1" = 100'      NOVEMBER 14, 1995



GRAPHIC SCALE 1" = 100'

NOTE:  
 The bearings shown hereon are based on the same meridian as the centerline of London Groveport Road (S 80°12'30" E) of record in Plat Book 57, Page 31.  
 Right-of-way monumentation will be set upon completion of roadway improvements