

8C606700

SURVEY OF PROPOSED RELOCATED HOOVER ROAD Located In

Virginia Military Survey Nos. 1434, 6115 & 14081 Jackson Township, Franklin County, Ohio

SURVEYED & PLATTED BY EVANS, MECHWART, HAMBLETON & TILTON, INC. CONSULTING ENGINEERS & SURVEYORS 170 MILL STREET GAHANNA, OHIO 43230 (614) 471-5150



By James R. Hill Professional Surveyor No. 6919

SCALE: 1" = 100' OCTOBER 20, 1993 REVISED JUNE 6, 1995 1994

o = IRON PIN v = R.R. SPIKE

BASIS OF BEARINGS: The bearings shown hereon are based on a meridian in a bearing system in which the southerly line of Meadow Grove Section 1 has a bearing of North 74°04'13" East as shown on the record plat of Meadow Grove Section 1 of record in Plot Book 52, Page 80.

Shirley B. Bartok, Miriam Mae Todd, Vera Jane Ridderbusch Parcel 1 29.696 Ac. D.B. 3547, Pg. 663

0.221 Ac. -0.164 Ac. Exist. R/W 0.057 Ac. Net

Edwin R. White Parcel 1 29.696 Ac. D.B. 3570, Pg. 860

4.445 Ac. -0.212 Ac. Exist. R/W Hoover -0.691 Ac. Exist. R/W S.R. 665 3,542 Ac. Net

Edwin R. White Parcel 1 29.696 Ac. D.B. 3570, Pg. 860

19.995 Ac. (Residue)

5.420 Ac. (Residue) -0.822 Ac. R/W 4,598 Ac. Net

0.315 Ac. -0.228 Ac. Exist. R/W 0.087 Ac. Net

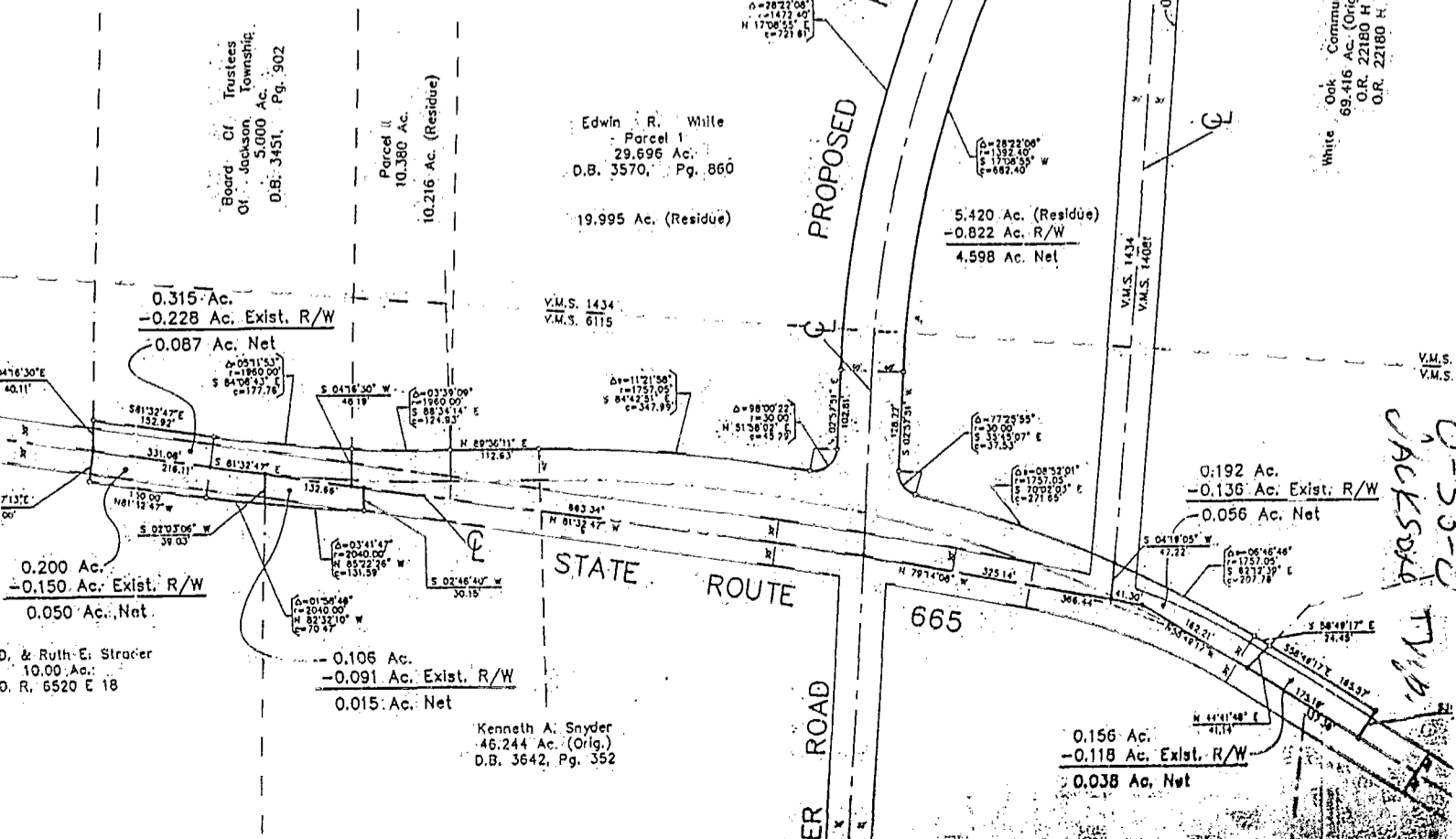
0.200 Ac. -0.150 Ac. Exist. R/W 0.050 Ac. Net

0.106 Ac. -0.091 Ac. Exist. R/W 0.015 Ac. Net

Kenneth A. Snyder 46.244 Ac. (Orig.) D.B. 3642, Pg. 352

0.192 Ac. -0.136 Ac. Exist. R/W 0.056 Ac. Net

0.156 Ac. -0.118 Ac. Exist. R/W 0.038 Ac. Net



The Epcor Group Inc. 10,812 Ac. O.R. 22970 H. 05

White Oak Communities Inc. 69,416 Ac. (Original) O.R. 22180 H. 01 O.R. 22180 H. 04

O-33-C JACKSON TWP. OHIO