



CIVIL ENGINEERING

ASSOCIATES

9015

Antares Avenue

Columbus, Ohio 43240

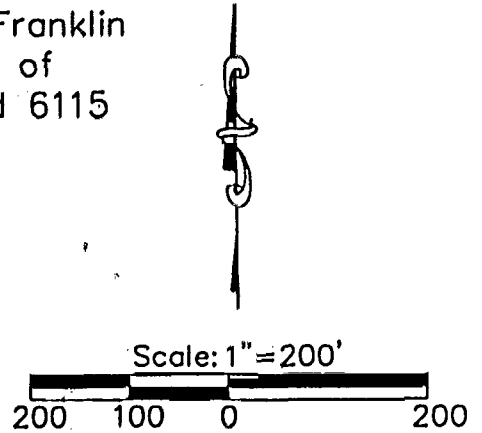
Tel. 614.433.9015

Fax 614.433.9513

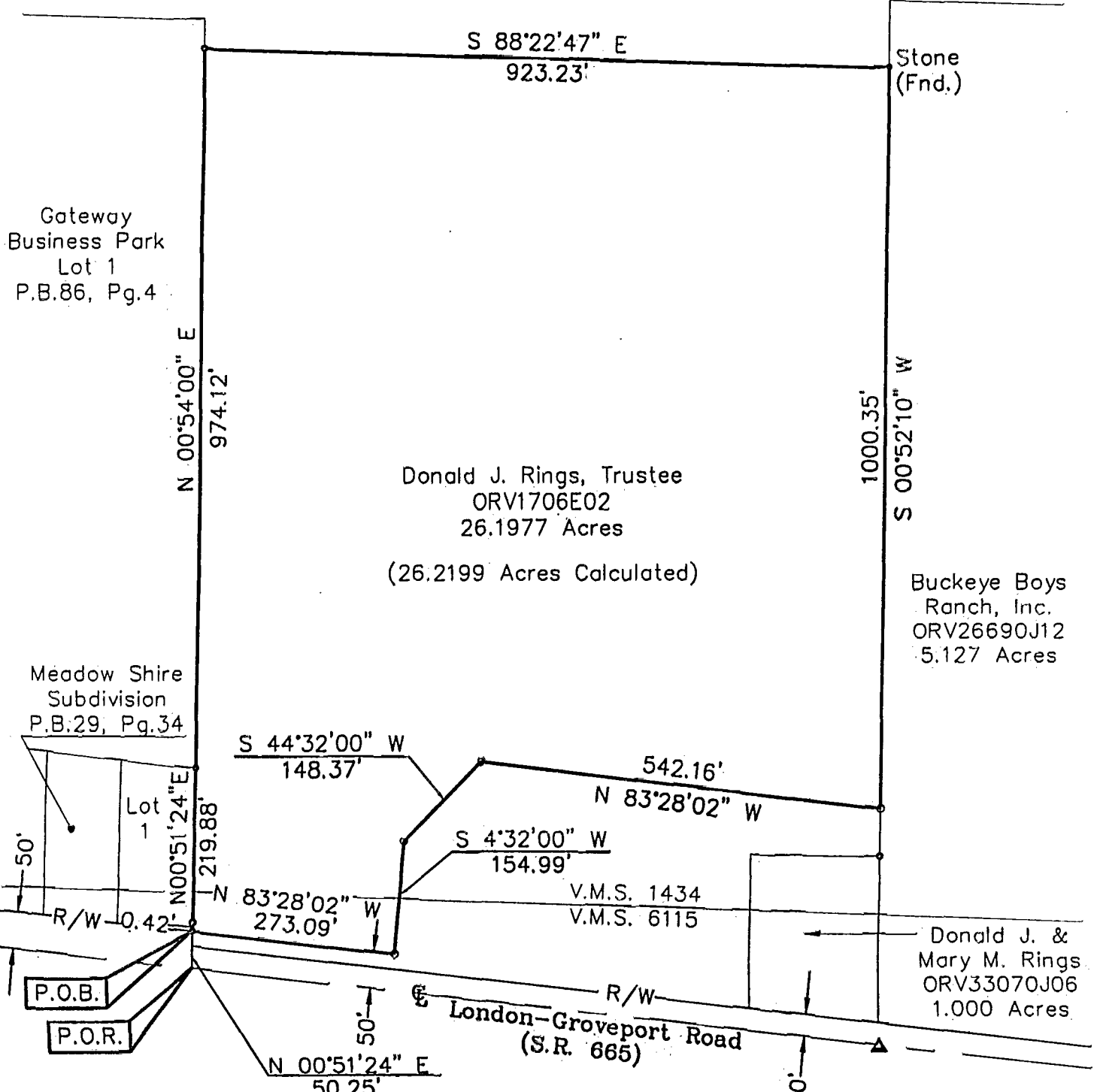
# 22.250 Acres

Situated in the State of Ohio, County of Franklin  
Township of Jackson and being a part of  
Virginia Military Survey Numbers 1434 and 6115

- ▲ = R.R. Spk. Fnd.
  - △ = RR Spk. Set
  - = I.P. Fnd.
  - = I.P. Set
- I.P. Set are 3/4" O.D. Iron Pin  
30" long w/cap inscribed CEA.



Gateway Business Park  
Lot 3  
P.B.86, Pg.4



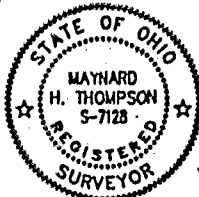
Donald J. Rings, Trustee  
ORV1706E02  
26.1977 Acres  
(26.2199 Acres Calculated)

Stone  
(Fnd.)

Buckeye Boys  
Ranch, Inc.  
ORV26690J12  
5.127 Acres

Donald J. &  
Mary M. Rings  
ORV33070J06  
1.000 Acres

This drawing was prepared by  
Civil Engineering Associates, Inc.,  
Columbus, Ohio from an actual  
field survey. The basis of bearing is  
N 83°28'02" W for the centerline  
of London-Groveport Road.



*Maynard H. Thompson*  
Maynard H. Thompson, P.S. 7128  
5/5/90 Date

006 958 08

CEA FILE NAME: S:\SHARED\98\0050\805PLT.DWG. LAST EDITED BY GATE2 ON: 05-01-98 @ 14:43