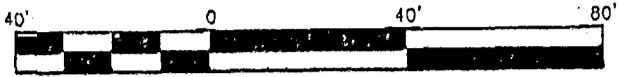


SURVEY OF ACREAGE PARCEL
VIRGINIA MILITARY SURVEY No. 1434
CITY OF GROVE CITY, FRANKLIN COUNTY, OHIO

SCALE 1" = 40'

MAY 6, 1998



GRAPHIC SCALE
(IN FEET)

- ▲ R.R. Spk. Fnd.
- △ R.R. Spk. Set
- I.P. Fnd.
- I.P. Set

I.P. set are 3/4" O.D. Iron Pin
30" long w/cap inscribed EMH&T.



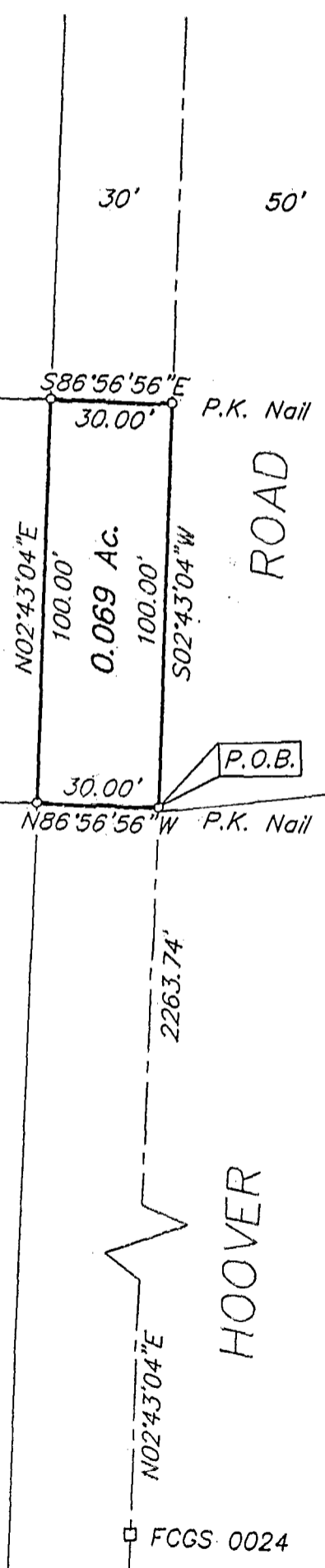
DOROTHY EHMANN
0.643 Ac.
OR 16053E02

VINSON P. & DAWN M LEWIS
0.643 Ac.
OR 09751H10

MARA ENTERPRISES INC
1.739 Ac.
OR 29451H06

OPE INC
O.R. 30213F06
0.918 Ac.

68
Meadow Grove
Sec. 3
P.B. 62, PG. 63
67



FCGS 0024

E.M.H.&T. INC.

Bearings are based on F.C.G.S. monuments Jackson & Jackson Azimuth which determines the centerline of Hoover Road as being N 2°43'04" E.

By Clark E. White
Professional Surveyor No. 7868

S.C. 606 725