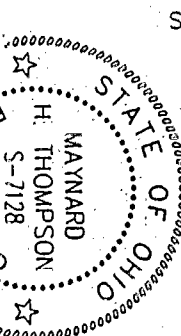


Anacleto Galli Trust  
 ORV29283D16  
 103.7 Acres (Deed)  
 100.691 Acres (Calculated)

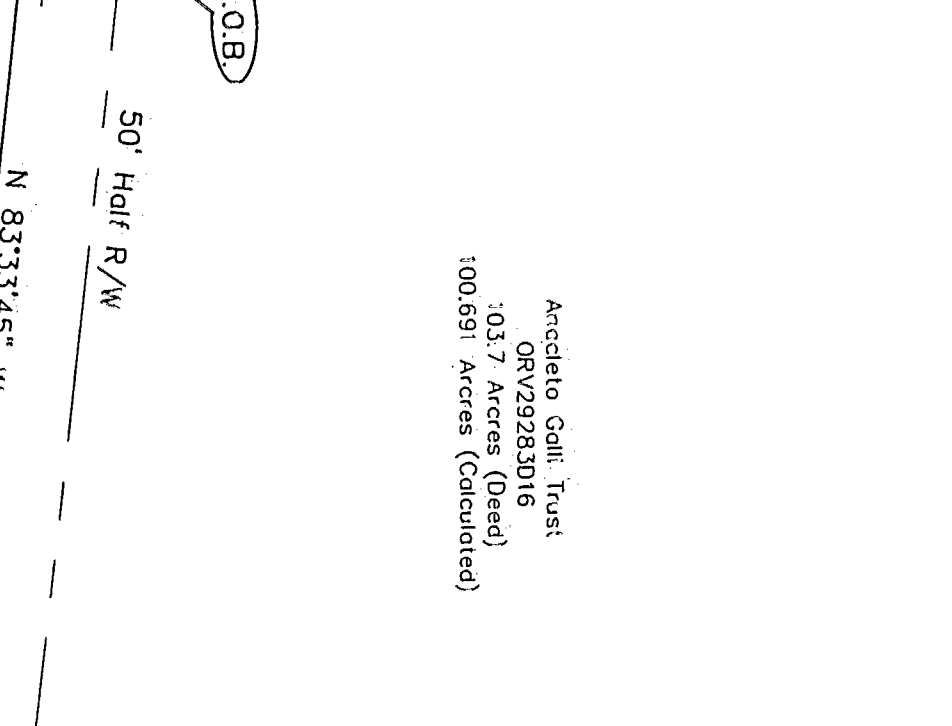
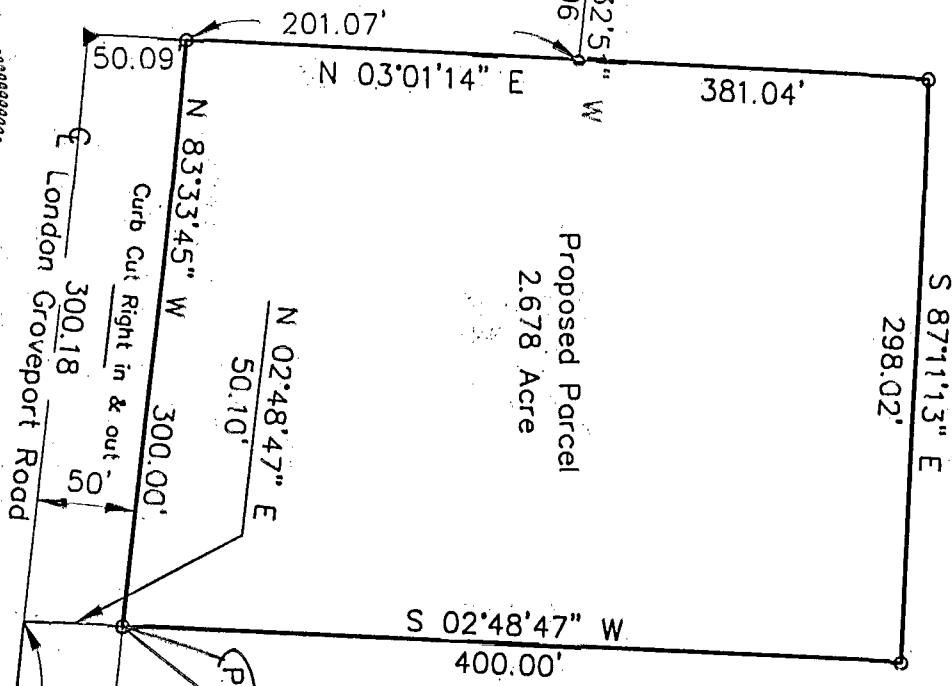
Situated in the State of Ohio, County of Franklin, City of Grove City,  
 being part of Virginia Military Survey No. 1371 and  
 being 2.678 acres out of an original 103.7 acre tract.

Anacleto Galli Trust  
 ORV29283D16  
 103.7 Acres (Deed)  
 100.691 Acres (Calculated)

Solid Waste Authority of Central Ohio  
 ORV. 32314E13  
 0.573 Acres



Handwritten: H-33-0



This plat was prepared by Environmental Design Group Inc., from  
 an actual field survey. The bearing basis N 83°33'45\"/>

Meynard H. Thompson, P.S. No. 7128  
 Environmental Design Group

Handwritten: 12/8/99  
 Date

- ▲ = R.R. Spk. End.
- △ = R.R. Spk. Set
- = I.P. Fnd.
- = I.P. Set
- I.P. Set are 3/4" I.D.  
 Iron Pin 30" long with  
 cap inscribed EDG.



V.M.S. 1371  
 V.M.S. 1434  
 LOT 7

Concrete Construction Company  
 D.B. 3133, Page 08  
 60.128 Acres

Handwritten: 00695866

PROJ. NO:	RUSCILLI
FILE NO:	PLAT
DRAWN BY:	MWG
CHKD. BY:	MHT

**EDG**  
**ENVIRONMENTAL**  
**DESIGN GROUP**

ENGINEERS - LANDSCAPE ARCHITECTS - SURVEYORS  
 9015 Antares Avenue  
 Columbus, OH 43240  
 Tel. 614 433 8015  
 Fax. 614 433 8513

2.678 Acre