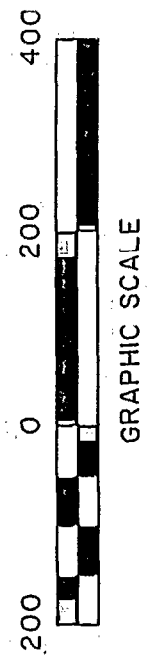
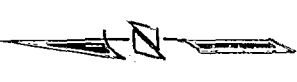
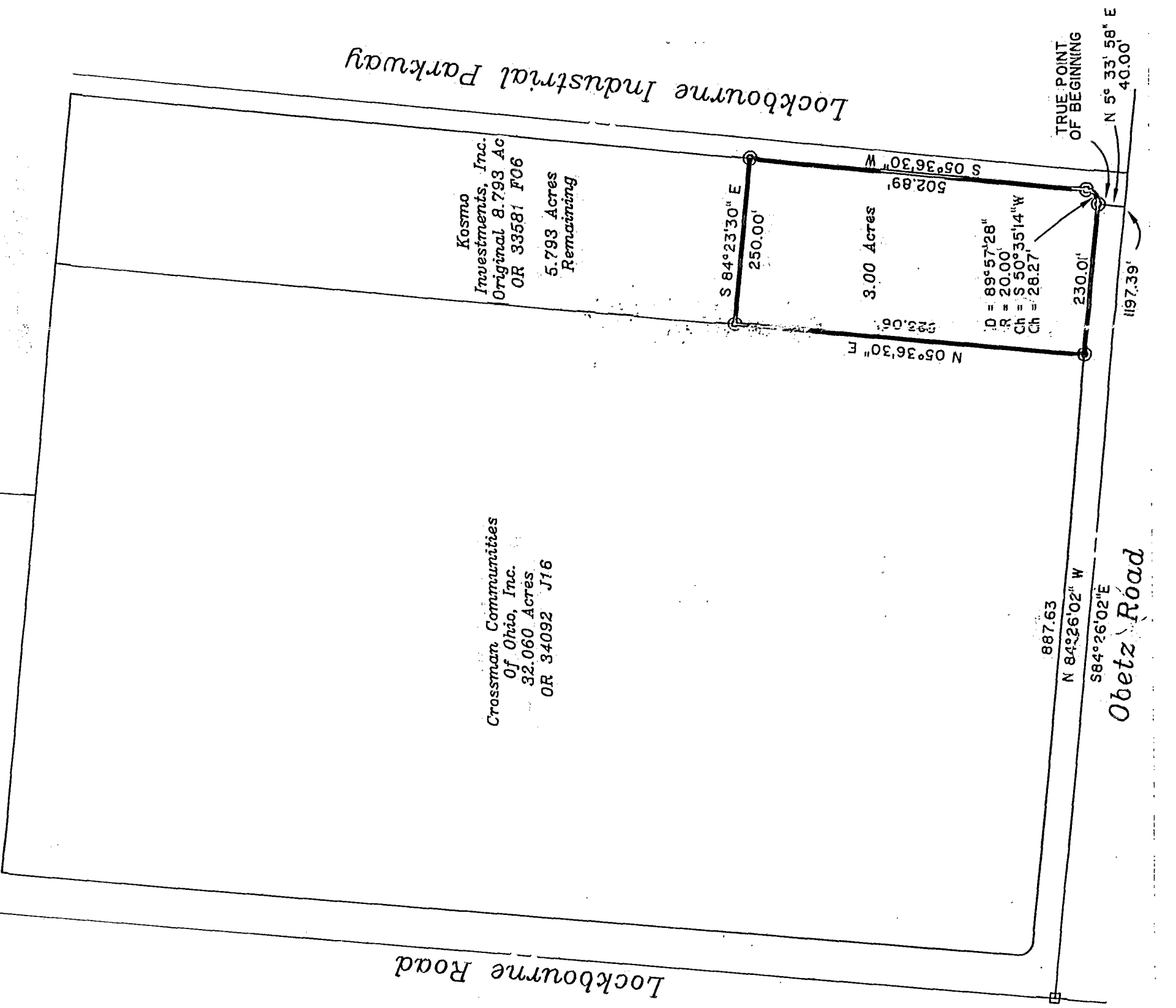


Lockbourne II LLC
Inst. No. 199803190063714



The basis of bearings shown hereon is that of N 5°19'30" E, for the centerline of Lockbourne Road, of record in Plat Book 50 at Page 57.



REFERENCE POINT
FRANKLIN COUNTY
ENGINEERS MONUMENT
2260



Exhibit of
3.00 ACRE TRACT
lying in
Reserve B, Lockbourne Industrial Park
Columbus, Franklin County, Ohio

1" = 200' Dec-1998

PREPARED BY:
R.D. Zande & Associates, Inc.
1237 Dublin Road Columbus, Ohio 43215
(614) 486-4393 FAX (614) 486-4387

George Brian Wyatt
Registered Surveyor No. 6906