

**SURVEY OF PART OF RESERVE "B"  
LOCKBOURNE INDUSTRIAL PARK  
CITY OF COLUMBUS, FRANKLIN COUNTY, OHIO**

83606825

4140 Lockbourne Ltd.  
5.188 Ac.  
O. R. 31045113

LOCKBOURNE

RESERVE "B"  
P. B. 50,  
Pg. 57

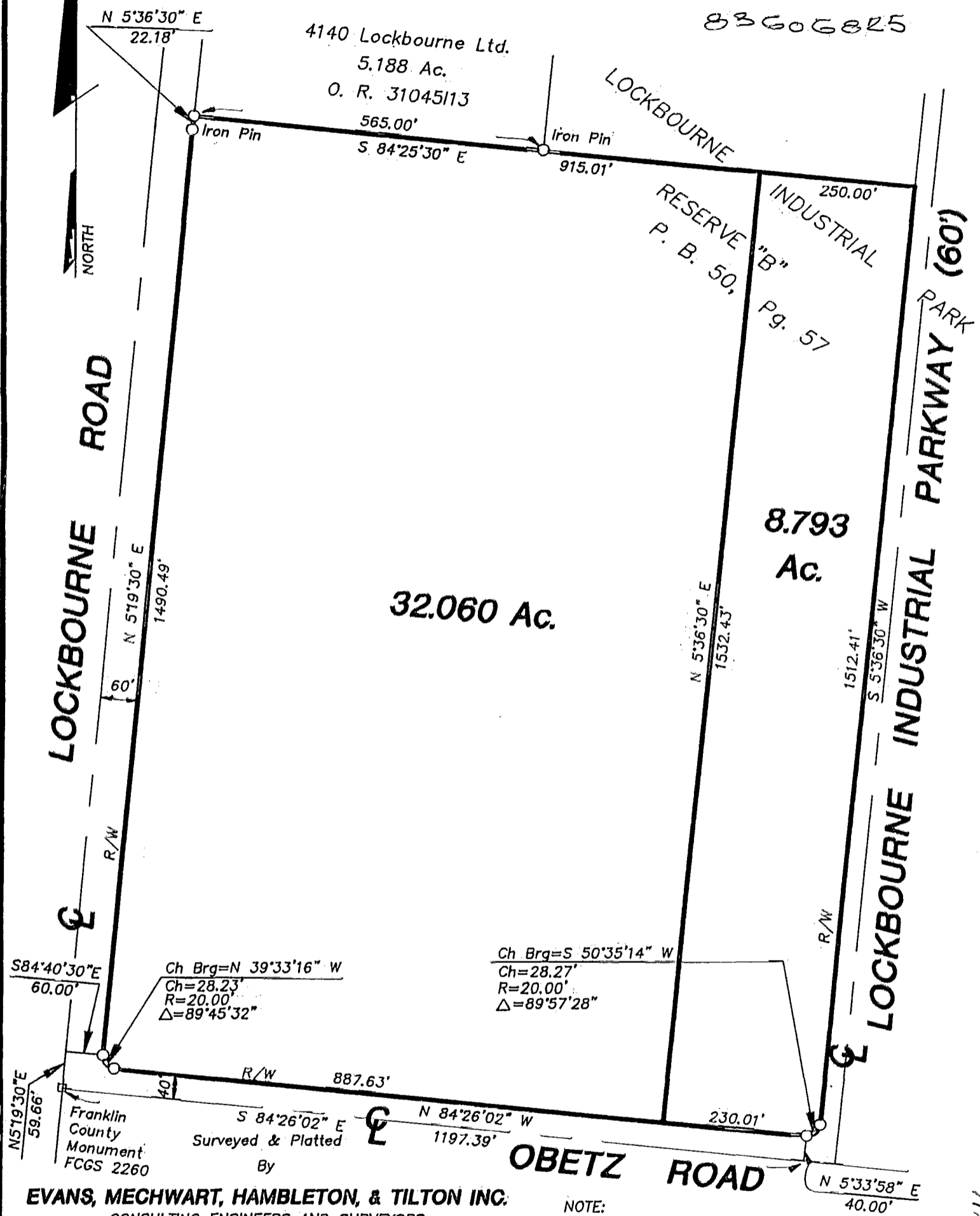
PARK (09)

8.793  
Ac.

32.060 Ac.

LOCKBOURNE INDUSTRIAL PARKWAY (60')

OBETZ ROAD



Ch Brg=N 39°33'16" W  
Ch=28.23'  
R=20.00'  
Δ=89°45'32"

Ch Brg=S 50°35'14" W  
Ch=28.27'  
R=20.00'  
Δ=89°57'28"

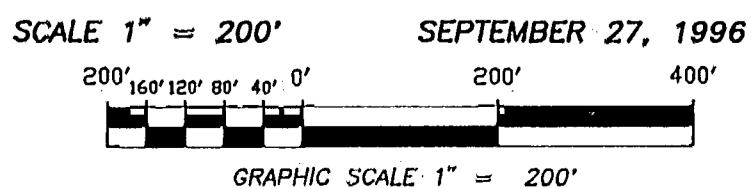
Franklin County Monument FCGS 2260

Surveyed & Platted By

**EVANS, MECHWART, HAMBLETON, & TILTON INC.**  
CONSULTING ENGINEERS AND SURVEYORS  
170 MILL STREET  
GAHANNA, OHIO 43230  
614/471-5150

NOTE:  
The bearings shown hereon are based on the same meridian as the centerline of Lockbourne Road (N 5° 19' 30" E) of record in Plat Book 50, Page 57.

By Thomas D. Sibbalds  
Thomas D. Sibbalds  
Registered Surveyor No. 5908



7411-70L  
83606825  
83606825