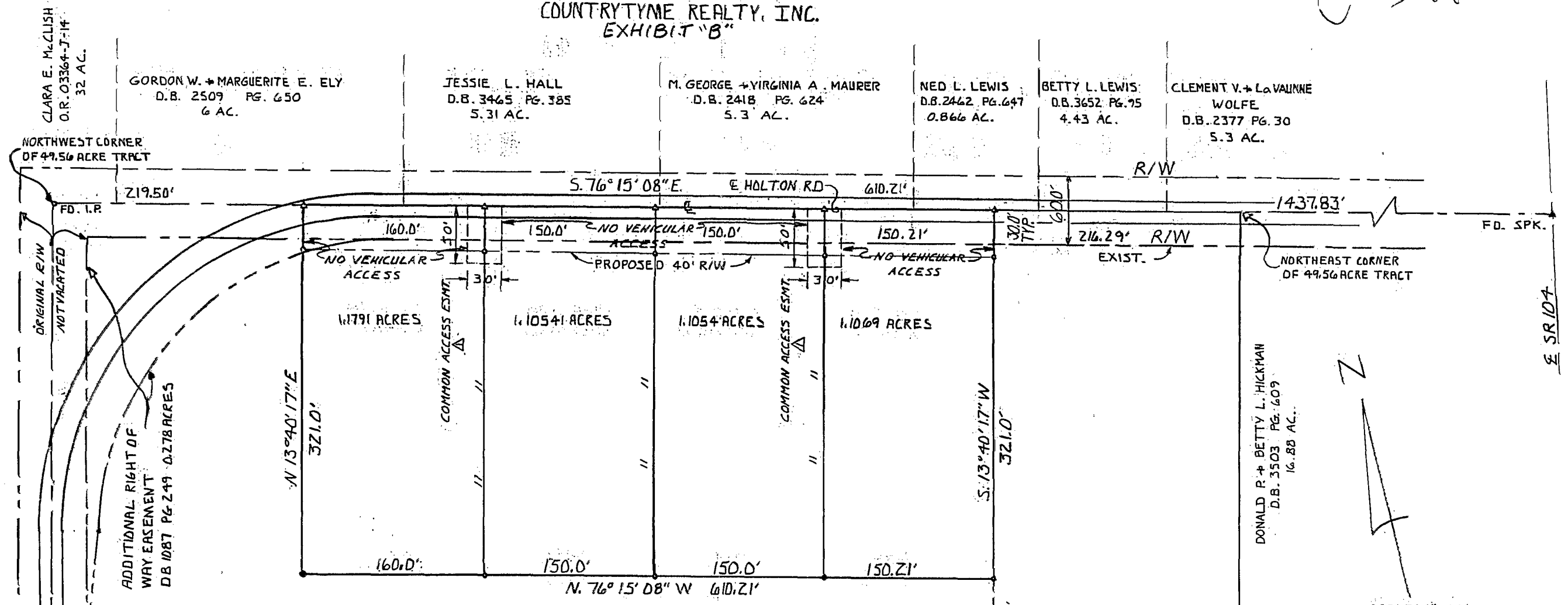


SURVEY OF 4.4968 ACRES
FOR
COUNTRYTIME REALTY, INC.
EXHIBIT "B"

C-3A-D



CLARA E. McCLISH
D.B. 03364-J-14
32 AC.

GORDON W. + MARGUERITE E. ELY
D.B. 2509 PG. 650
6 AC.

JESSIE L. HALL
D.B. 3465 PG. 385
5.31 AC.

M. GEORGE + VIRGINIA A. MAURER
D.B. 2418 PG. 624
5.3 AC.

NED L. LEWIS
D.B. 2462 PG. 647
0.866 AC.

BETTY L. LEWIS
D.B. 3652 PG. 75
4.43 AC.

CLEMENT V. + LOUANNIE WOLFE
D.B. 2377 PG. 30
5.3 AC.

NORTHWEST CORNER
OF 49.56 ACRE TRACT

1437.83'

FD. SPK.

FD. I.P.

ORIGINAL R/W
NOT VALUED

ADDITIONAL RIGHT OF
WAY EASEMENT
DB 1087 PG 249 0.278 ACRES

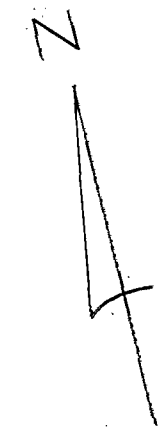
N 13°40'17\"/>

COMMON ACCESS ESMT.

COMMON ACCESS ESMT.

S 13°40'17\"/>

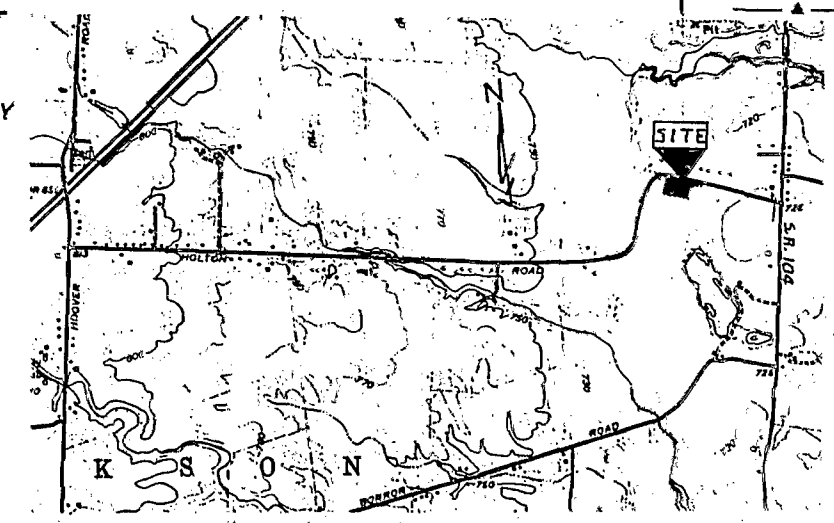
DONALD R. + BETTY L. HICKMAN
D.B. 3503 PG. 609
16.88 AC.



SCALE: 1" = 60'

- — INDICATES SET IRON PIN
- ▲ — INDICATES SET SPIKE

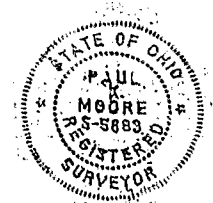
SITUATED IN JACKSON TOWNSHIP, FRANKLIN COUNTY, OHIO, AND BEING
LOCATED IN VIRGINIA MILITARY SURVEY 478, AND BEING PART OF A
49.56 ACRE TRACT OF LAND RECORDED IN A CERTIFICATE OF TRANSFER
OF RECORD IN D.B. 04914-B-08, ITEM 3, PARCEL 4, FRANKLIN COUNTY
RECORDER'S OFFICE.



THIS DRAWING WAS PREPARED FROM AN ACTUAL FIELD SURVEY
MADE BY PAUL K. MOORE & ASSOCIATES ON DECEMBER 21, 1986
AND REPRESENTS THE PREMISES AS SHOWN HEREON TO THE BEST
OF OUR KNOWLEDGE.

SIGNED AT REYNOLDSBURG, OHIO THIS 11th DAY OF DECEMBER 1986.

Paul K. Moore
PAUL K. MOORE, REGISTERED SURVEYOR NO. 5883



PAUL K. MOORE + ASSO.			
6515 E. LIVINGSTON AVE. SUITE 11			
BLACKLICK PLAZA REYNOLDSBURG OHIO 43068			
SCALE: 1" = 60'	ADDED ACCESS ESMTS. <i>AK</i>	DATE: 12/18/86	DATE: 6-3-87
DRAWN: JWW	CHECKED: PKM		
TITLE: HOLTON ROAD FARM SURVEY			
FOR COUNTRYTIME REALTY, INC.			