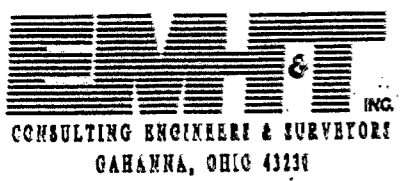


81356800

C-34-B

JACKSON Twp.

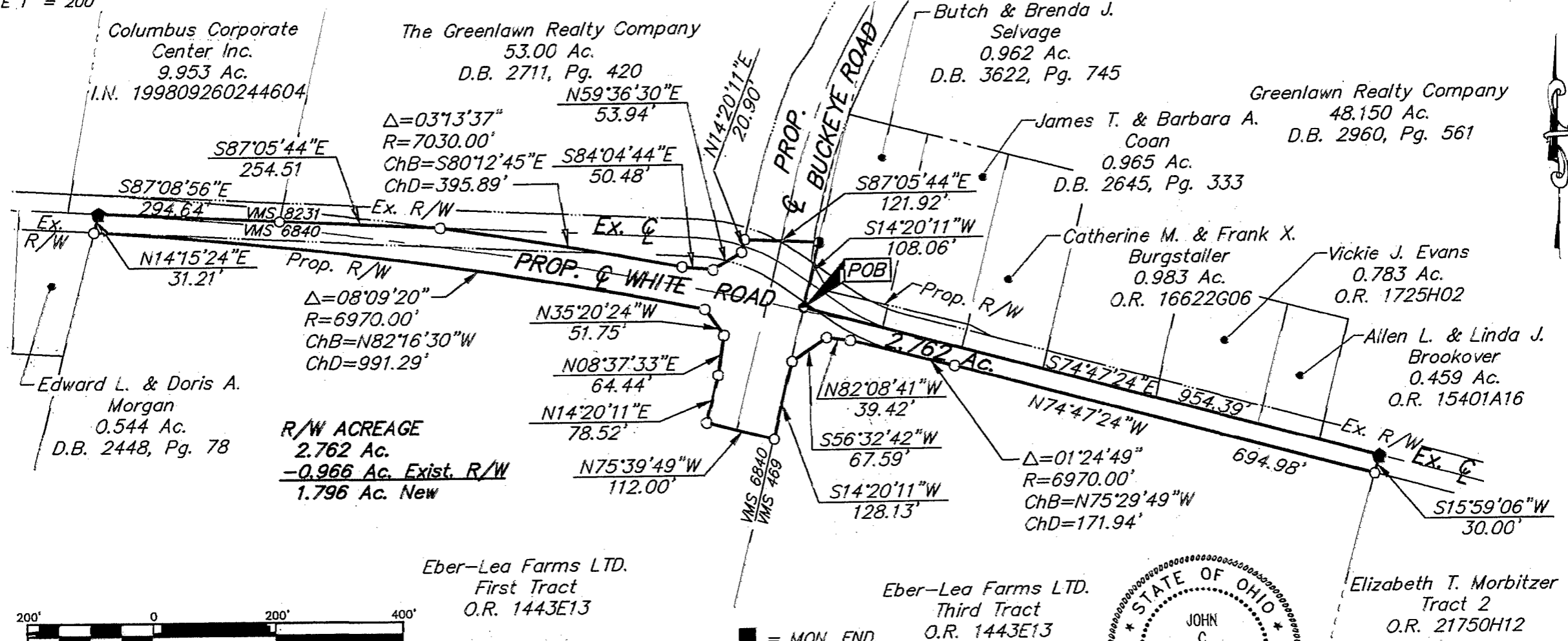


SURVEY OF ACREAGE PARCEL

VIRGINIA MILITARY SURVEY NO. 6840 & NO. 469
JACKSON TOWNSHIP & CITY OF GROVE CITY, FRANKLIN COUNTY, OHIO
EXHIBIT C19

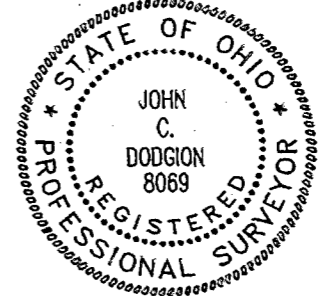
FEBRUARY 07, 2002

SCALE 1" = 200'



The bearings for this plat are based on the Ohio State Plane Coordinate System as per NAD83. Control for bearings was from coordinates of monuments FRANK 25 & FRANK 125, having a bearing of South 87°46'00" East, established by the Franklin County Engineering Department, using Global Positioning System procedures and equipment.

I.P.S Set are 13/16" I.D. Iron pipe W/ cap inscribed EMHT INC.



By John C. Dodgion
John C. Dodgion No. 8069