

SURVEY OF ACREAGE PARCEL

 VIRGINIA MILITARY SURVEY NOS. 469 AND 8231

 CITY OF GROVE CITY, FRANKLIN COUNTY, OHIO

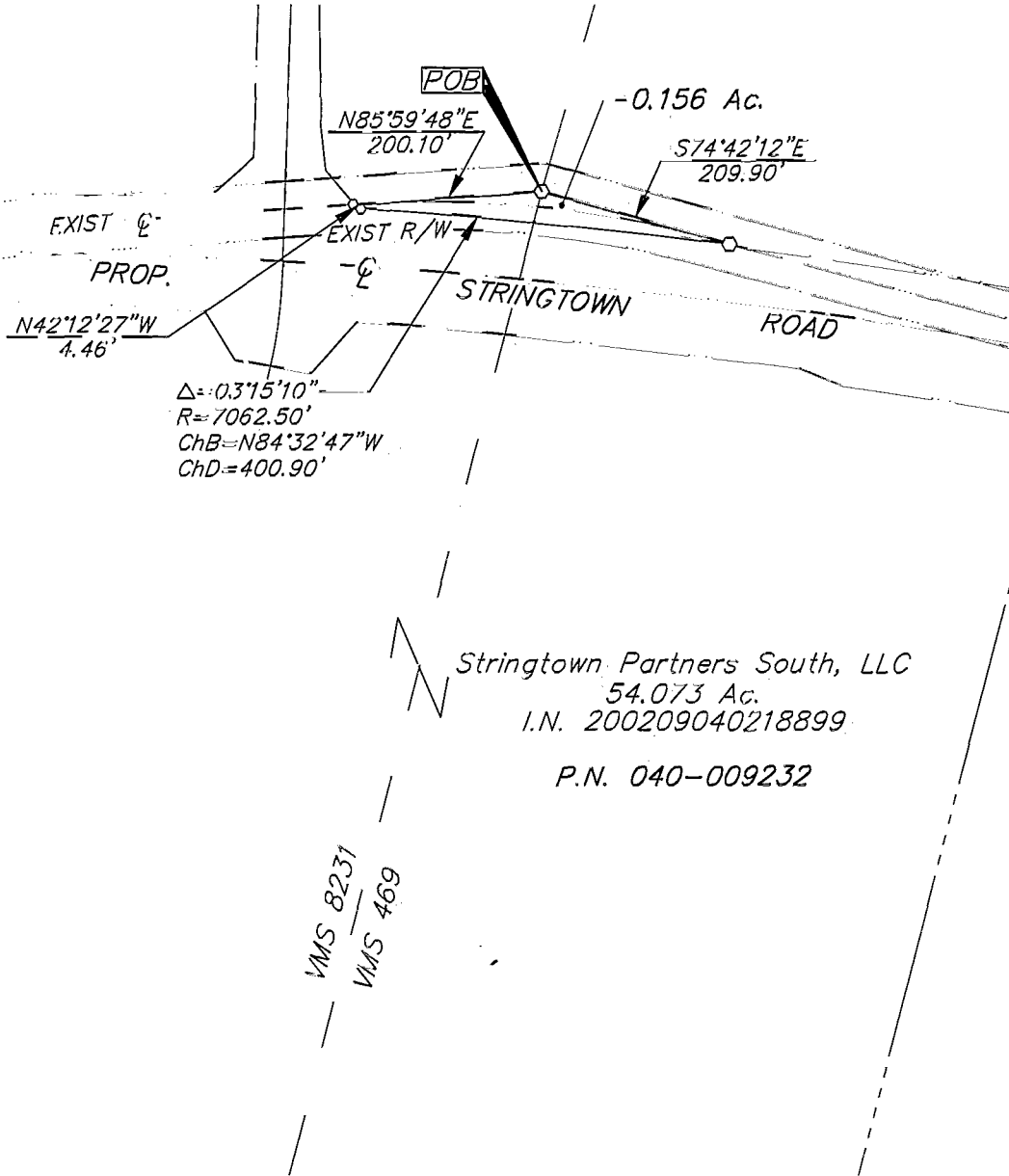
 EXHIBIT C21

8160.825

SCALE: 1" = 200'

FEBRUARY 08, 2002

 REVISED: OCTOBER 02, 2002



The bearings for this plat are based on the Ohio State Plane Coordinate System as per NAD83. Control for bearings was from coordinates of monuments FRANK 25 & FRANK 125, having a bearing of South 87°46'00" East, established by the Franklin County Engineering Department, using Global Positioning System procedures and equipment.

- :: MON. FND.
- :: I.P. FND.
- :: I.P. SET
- (with dot) :: MAG. NAIL FND.
- (with dot) :: MAG. NAIL SET
- ▲ :: R.R. SPK. FND.
- △ :: R.R. SPK. SET
- ◆ :: P.K. NAIL FND.

I.P.S Set are 13/16" I.D. Iron pipe W/ cap inscribed EMHT INC



GRAPHIC SCALE (IN FEET)

By Clark E. White 10/2/02

 Professional Surveyor No. 7868

JACKSON TRIP

0-32-6

G:\PROJECT\20010313.01.DWG 1031328a.DWG - 0 XREFS. - PLOTTED BY JBUSHBY - October 02, 2002 - 11:42 AM