

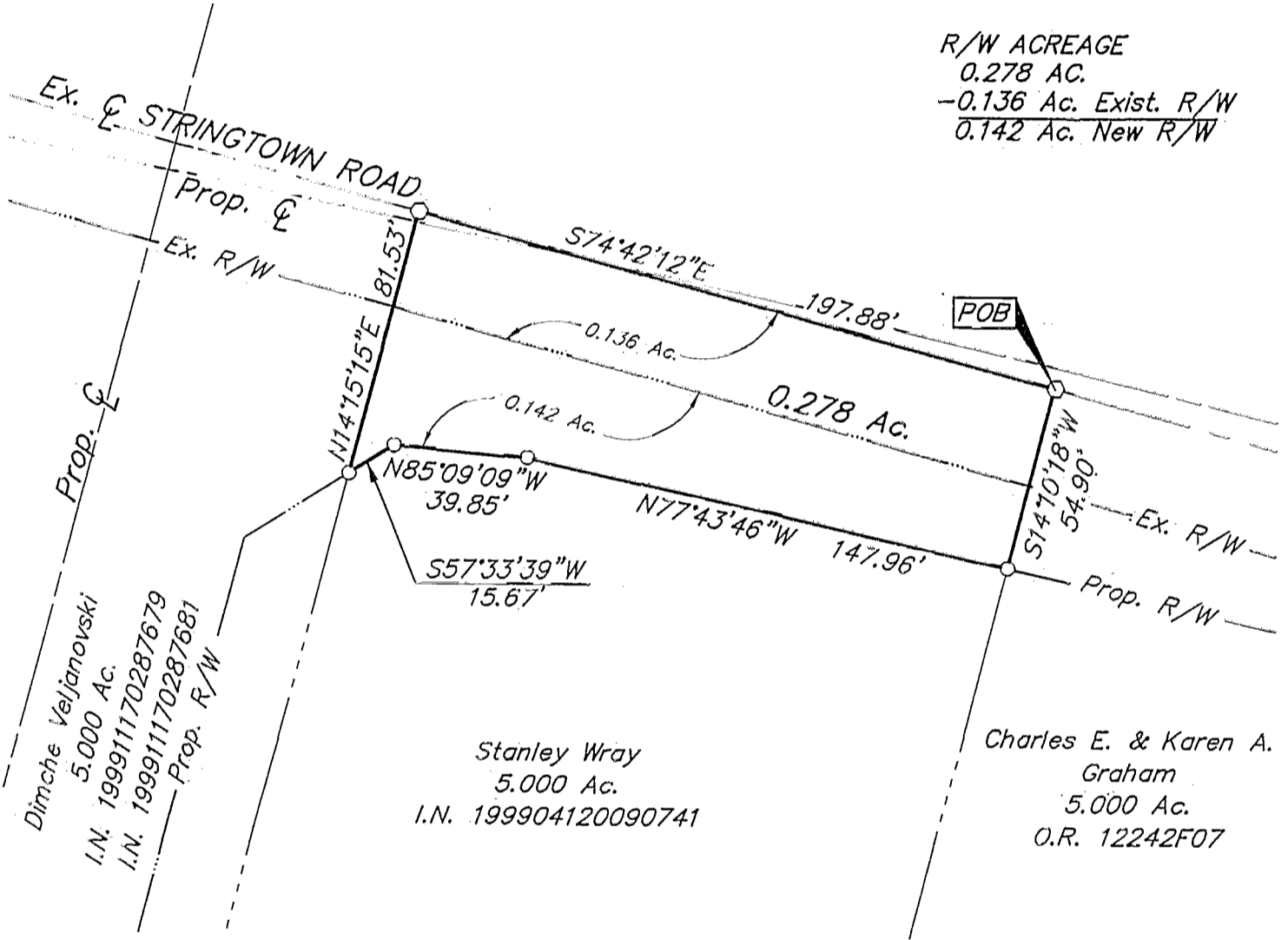
81606825

SCALE 1" = 50'

JANUARY 30, 2002



R/W ACREAGE
0.278 Ac.
-0.136 Ac. Exist. R/W
0.142 Ac. New R/W



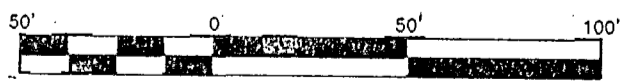
Dimche Veljanovski
5.000 Ac.
I.N. 199911170287679
I.N. 199911170287681
Prop. R/W

Stanley Wray
5.000 Ac.
I.N. 199904120090741

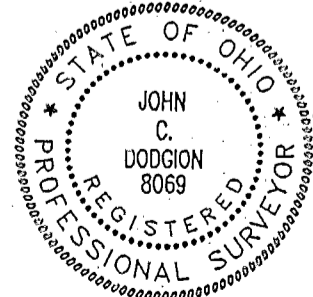
Charles E. & Karen A. Graham
5.000 Ac.
O.R. 12242F07

- = I.P. FND.
- = I.P. SET
- ⊙ = MAG. NAIL FND.
- ⊙ = MAG. NAIL SET
- ▲ = R.R. SPK. FND.
- △ = R.R. SPK. SET
- ⬢ = P.K. NAIL FND.

I.P.S Set are 13/16" I.D. Iron pipe W/ cap inscribed EMHT INC.



GRAPHIC SCALE (IN FEET)



The bearings for this plat are based on the Ohio State Plane Coordinate System as per NAD83. Control for bearings was from coordinates of monuments FRANK 25 & FRANK 125, having a bearing of South 87°46'00" East, established by the Franklin County Engineering Department, using Global Positioning System procedures and equipment.

By John C. Dodgion
John C. Dodgion No. 8069

Jackson Twp.

C-32-G