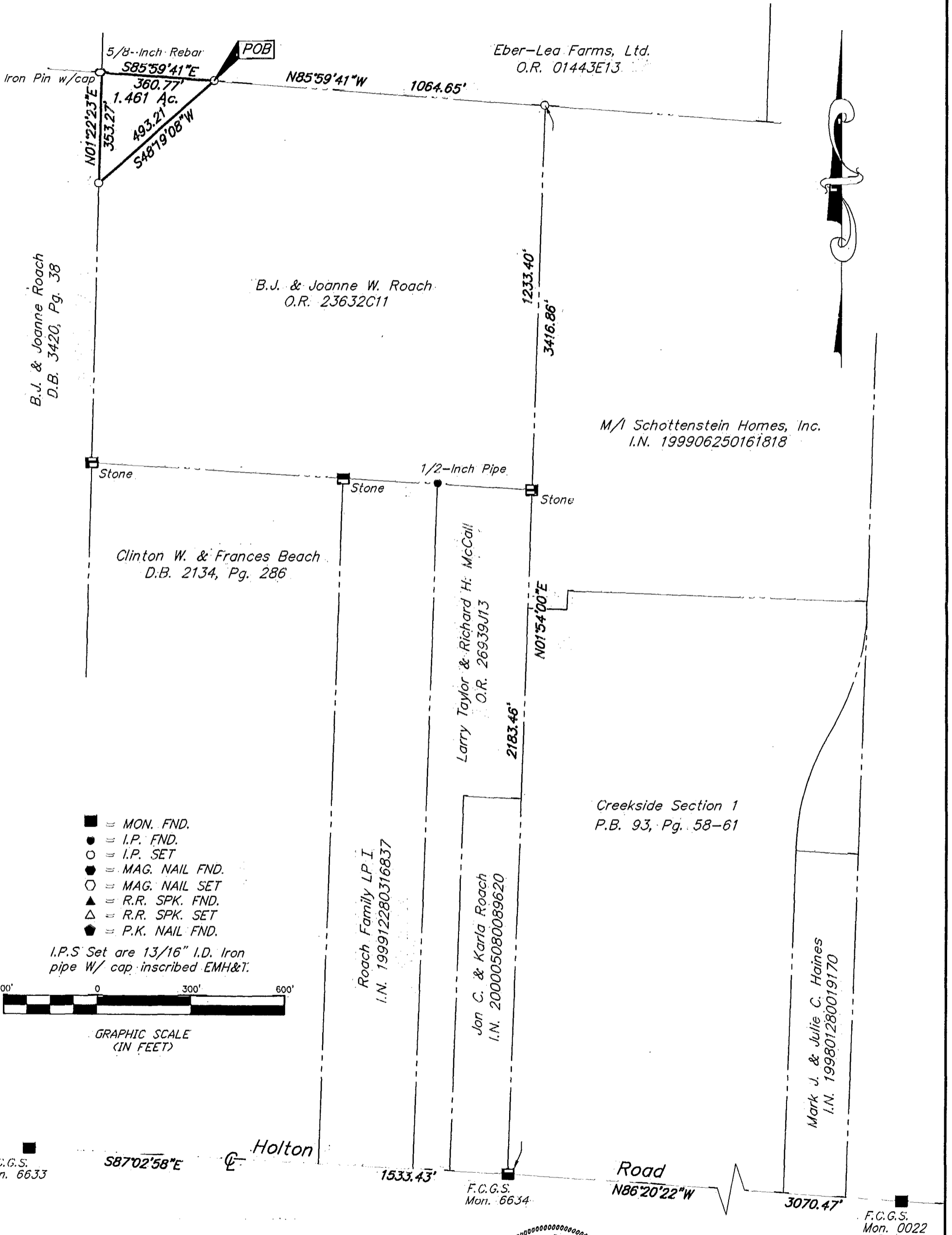


**SURVEY OF ACREAGE PARCEL**  
LOCATED IN  
**VIRGINIA MILITARY SURVEY 6840**  
CITY OF GROVE CITY, COUNTY OF FRANKLIN, STATE OF OHIO

SCALE 1" = 300'

NOVEMBER 20, 2000



Bearings hereon are based on North 86° 20' 22" West for the centerline of Holton Road Between Franklin County Geodetic Survey Monument Numbers 0022 and 6634.



By John C. Dodgion 11/20/00  
Professional Surveyor No. 8069

D:\SURVEY\PROJECTS\2000\11\20\112011.DWG - D XREFS: - PLOTTED BY JCD/SFBT - NOVEMBER 14, 2000 - 2:21 PM