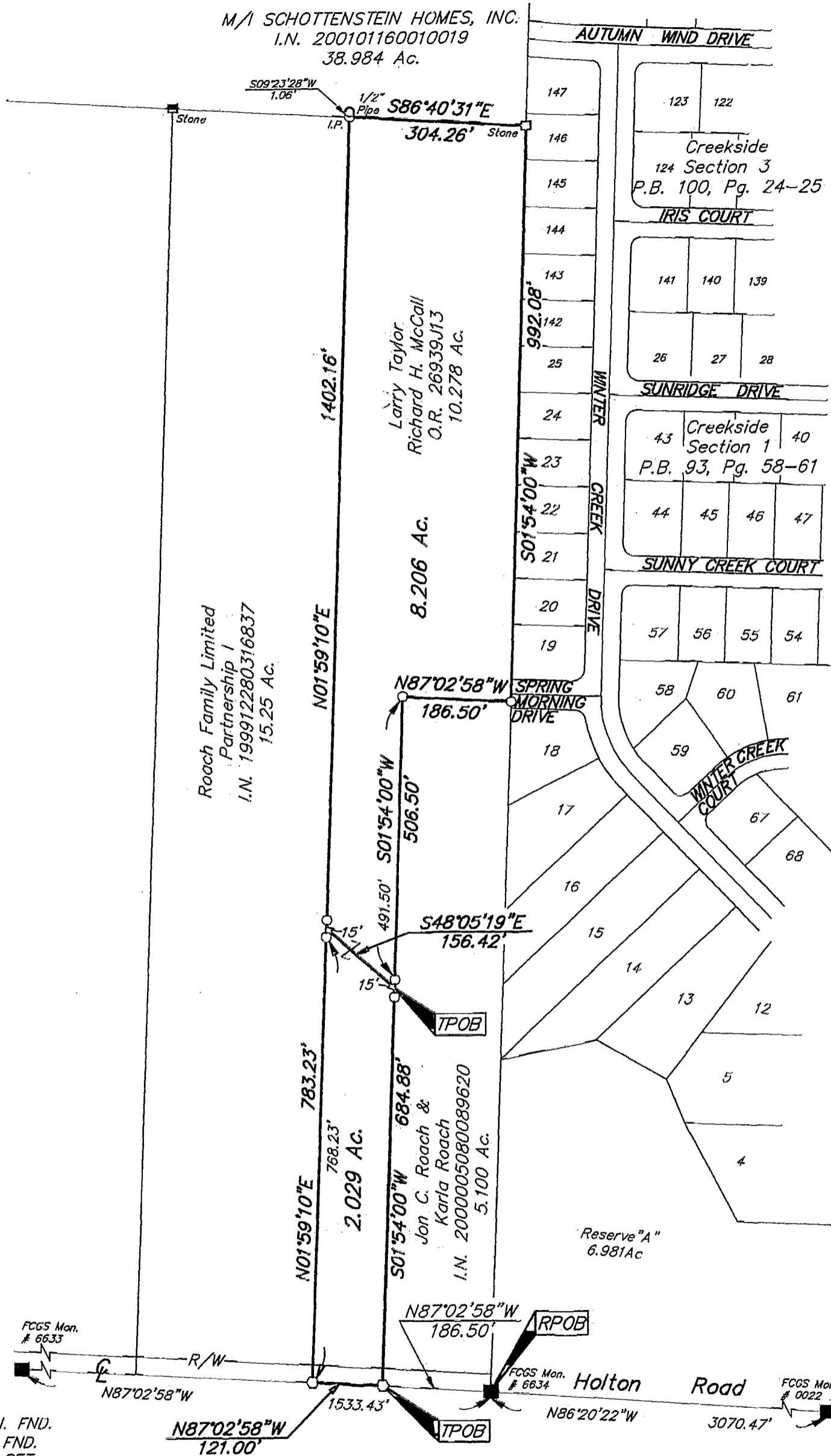


SURVEY OF ACREAGE PARCELS
 LOCATED IN
 VIRGINIA MILITARY SURVEY NO. 6840
 TOWNSHIP OF JACKSON, FRANKLIN COUNTY, OHIO

DECEMBER 09, 2002

SCALE 1" = 200'



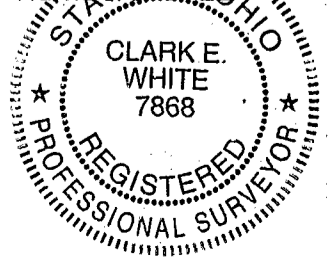
- = MON. FND.
- = I.P. FND.
- = I.P. SET
- = MAG. NAIL FND.
- = MAG. NAIL SET
- ▲ = R.R. SPK. FND.
- △ = R.R. SPK. SET
- = P.K. NAIL FND.

I.P.S Set are 13/16" I.D. Iron pipe W/ cap inscribed EMHT INC

Bearings hereon are based on North 86° 20' 22" West for the centerline of Holton Road between Franklin County Geodetic Survey Monument Numbers 0022 and 6634.



GRAPHIC SCALE (IN FEET)



By *Clark E. White* 12/10/02
 Professional Surveyor No. 7868