



J ENGINEERS & SURVEYORS
COLUMBUS, OHIO 43230

SURVEY OF 0.046 ACRE TRACT
LOCATED IN
VIRGINIA MILITARY SURVEY NO. 1383
CITY OF GROVE CITY
COUNTY OF FRANKLIN, STATE OF OHIO

SCALE 1" = 30'

APRIL 24, 1995

IRON PIN

RECORD REFERENCES O.R. 18852 B04



Graphic Scale: 1" = 30'

HOOVER CROSSING
SECTION 1
P.B. 74, PGS. 99&100
30

276

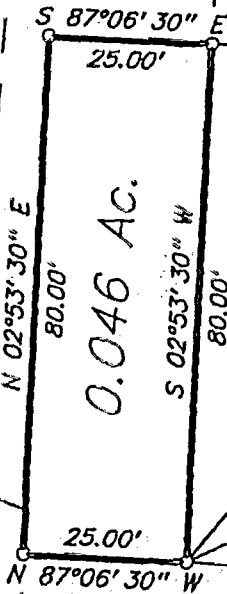
PROPOSED
HOOVER CROSSING
SECTION 6

120

277

HOOVER CROSSING
SECTION 3
P.B. 77, PG. 16
119

HAUGHN ROAD
ASSOCIATES
O.R. 21730A01



P.O.B.

278

118



HAUGHN ROAD
ASSOCIATES
O.R. 18852B04



E.M.H.&T. INC.

BASIS OF BEARINGS: The bearings shown hereon are based on the same meridian as those shown on the subdivision plat entitled "Hoover Crossing Section 3" of record in Plat Book 77, Page 16, Recorder's Office, Franklin County, Ohio, on which the westerly lines of Lots 118, 119 and 120 have a bearing of N 2° 53' 30" E.

By Mark S. Ward
Professional Surveyor No. 7514

09/26/95
180 606 775

0-33-e