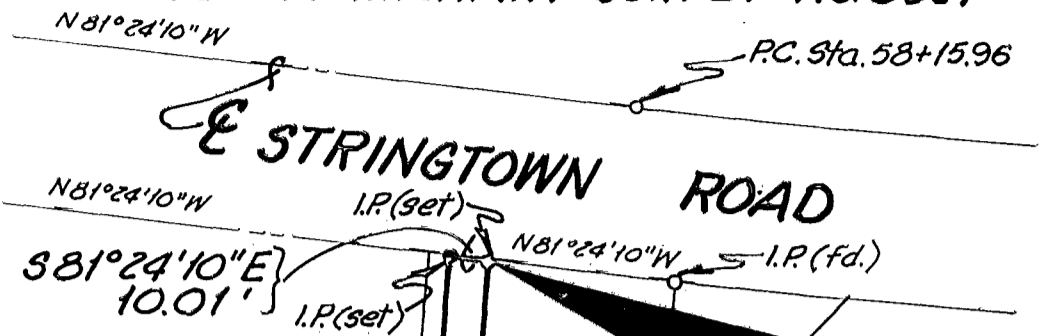


18106825

PLAT OF SURVEY OF 0.104 Acres COUNTY OF FRANKLIN, CITY OF GROVE CITY, OHIO VIRGINIA MILITARY SURVEY No. 8321



BASIS OF BEARING

Bearings are based on the existing Easterly Prop. line of Golden Arch Realty Corp., D.B. 3741, Pg. 649 as being North 06°13'50" East.

GOLDEN ARCH REALTY CORP. Vol. 3375, Pg. 333

0.104 ACRES

GOLDEN ARCH REALTY Vol. 3741, Pg. 649

N06°13'50"E
S06°13'50"W

KATHRYN

RIGHT OF WAY PLAT P.B. 58, Pg. 28

PLACE RIGHT OF WAY PLAT P.B. 49, Pg. 116

P.B. 49, Pg. 115

VALUE INN
5.048 Ac.

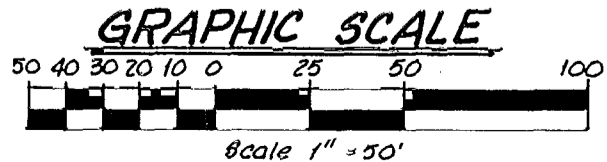
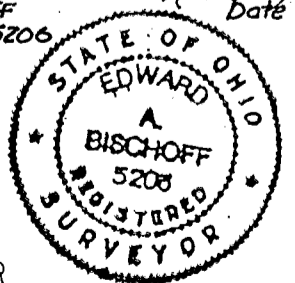
NOTE: All I.P.(s) Set have a Yellow Cap bearing the following: "BISCHOFF 5206"



CERTIFICATION BY SURVEYOR

I hereby certify that this plat of survey to be a true and correct representation of an actual field survey under my direct supervision on July 15, 1991.

Edward A. Bischoff Date
Edward A. Bischoff
Reg. Surveyor No. 5206



BISCHOFF & ASSOCIATES, INC.
Consulting Engineers

284 S. LIBERTY ST.
POWELL, OHIO 43065
(614) 846-6385

3425 GRANT AVE.
GROVE CITY, OHIO 43123
(614) 875-8776

0-32-F