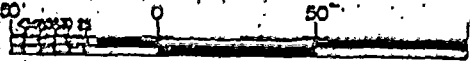


**SURVEY OF ACREAGE PARCEL**  
 LOCATED IN VIRGINIA MILITARY SURVEY NO. 8231  
 CITY OF GROVE CITY, FRANKLIN COUNTY, OHIO

SCALE 1" = 50'

April 10, 1900

RECORD REFERENCES O.R. 0488609

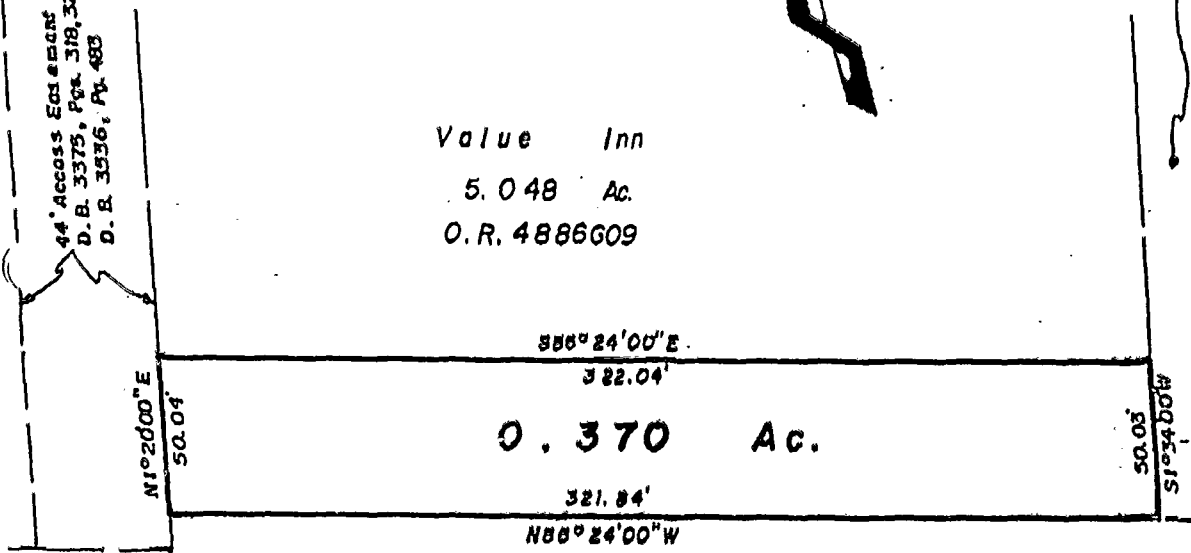


O. B. 3695

44' Access Easement to KATHRYN PLACE  
 D. B. 3375, Pgs. 318, 325 & 348  
 D. B. 3536, Pg. 483

Emro Land Co.  
 4.196 Ac.  
 D.B. 3696, Pg. 474

Value Inn  
 5.048 Ac.  
 O.R. 4886609



0.370 Ac.

Brookside Estates Ltd.  
 7.147 Ac  
 D.B. 3299, Pg. 74

NOTE:  
 The bearings shown hereon are based on  
 the same meridian as the bearings shown  
 in the deed of record in O.R. 0488609

O-32-F  
 Jackson Twp

E.M.H.&T. INC.

By Thomas D. Sibbald  
 Professional Surveyor No. 9808