

31-4

82857825

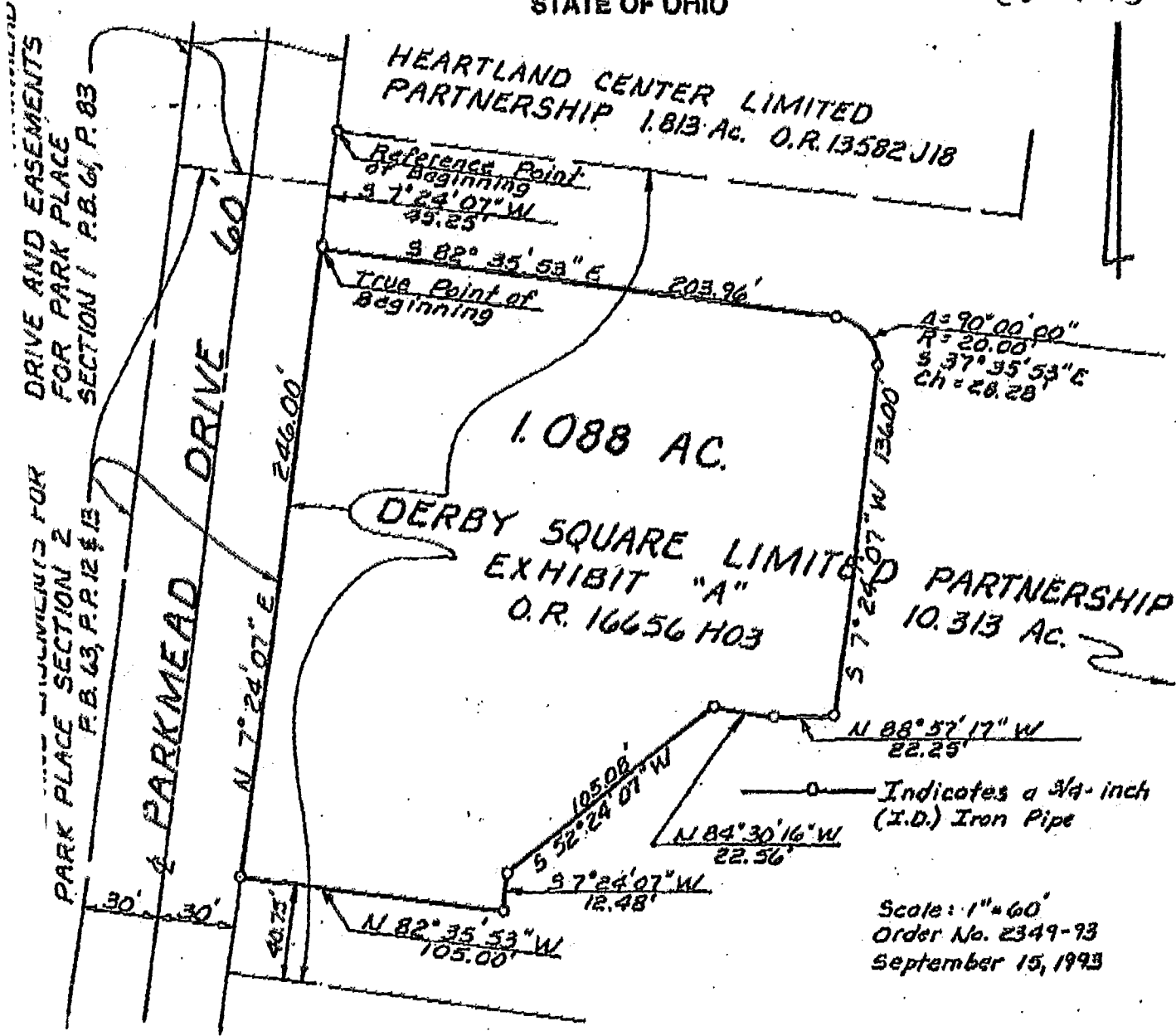
# BAUER, DAVIDSON & MERCHANT, INC.

CONSULTING ENGINEERS

255 GREEN MEADOWS DRIVE SOUTH P.O. BOX 370 POWELL OHIO 43065

BOUNDARY SURVEY MAP OF 1.088 ACRES OF LAND  
LOCATED ON THE EASTERLY SIDE OF PARKMEAD  
DRIVE AND SOUTH OF STRINGTOWN ROAD, IN THE  
CITY OF GROVE CITY, COUNTY OF FRANKLIN,  
STATE OF OHIO

EXHIBIT  
"A"  
(CONT'D)



Indicates a 3/4-inch (I.D.) Iron Pipe

Scale: 1" = 60'

Order No. 2349-93

September 15, 1993

Situated in the State of Ohio, County of Franklin, City of Grove City, being in Virginia Military Survey 8231 and containing 1.088 acres of land, more or less, said 1.088 acres being out of that 10.313 acre of land described in Exhibit "A" in the deed to Derby Square Limited Partnership, of record in Official Record 16656H03, Recorder's Office, Franklin County, Ohio.

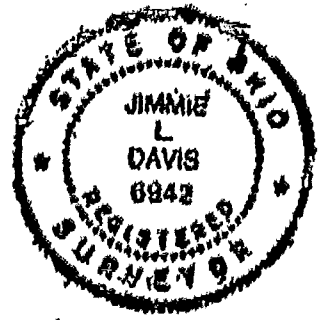
We hereby state that this map was prepared from information obtained from actual field surveys conducted by Bauer, Davidson & Merchant, Inc. in January of 1991 and in September of 1993.

All of the iron pipe survey markers noted on this map description were in place in September of 1993.

The bearings shown on this map correspond to the bearings shown on said recorded plats of Parkmead Drive and Easements for Park Place Section 1, of record in Plat Book 61, Page 83 and Parkmead Drive and Easements Park Place Section 2, of record in Plat Book 63, Pages 12 and 13, both being of record in the Recorder's Office, Franklin County, Ohio.

BAUER, DAVIDSON & MERCHANT, INC.  
Consulting Engineers

*Jimie L. Davis*  
Jimie L. Davis  
Professional Surveyor No. 6942



Jackson Twp.  
0-32-f