



PLAT OF 0.172 ACRE TRACT
 LOCATED IN
 VIRGINIA MILITARY SURVEY NO. 1383
 CITY OF GROVE CITY, FRANKLIN COUNTY, OHIO

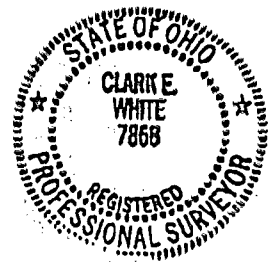
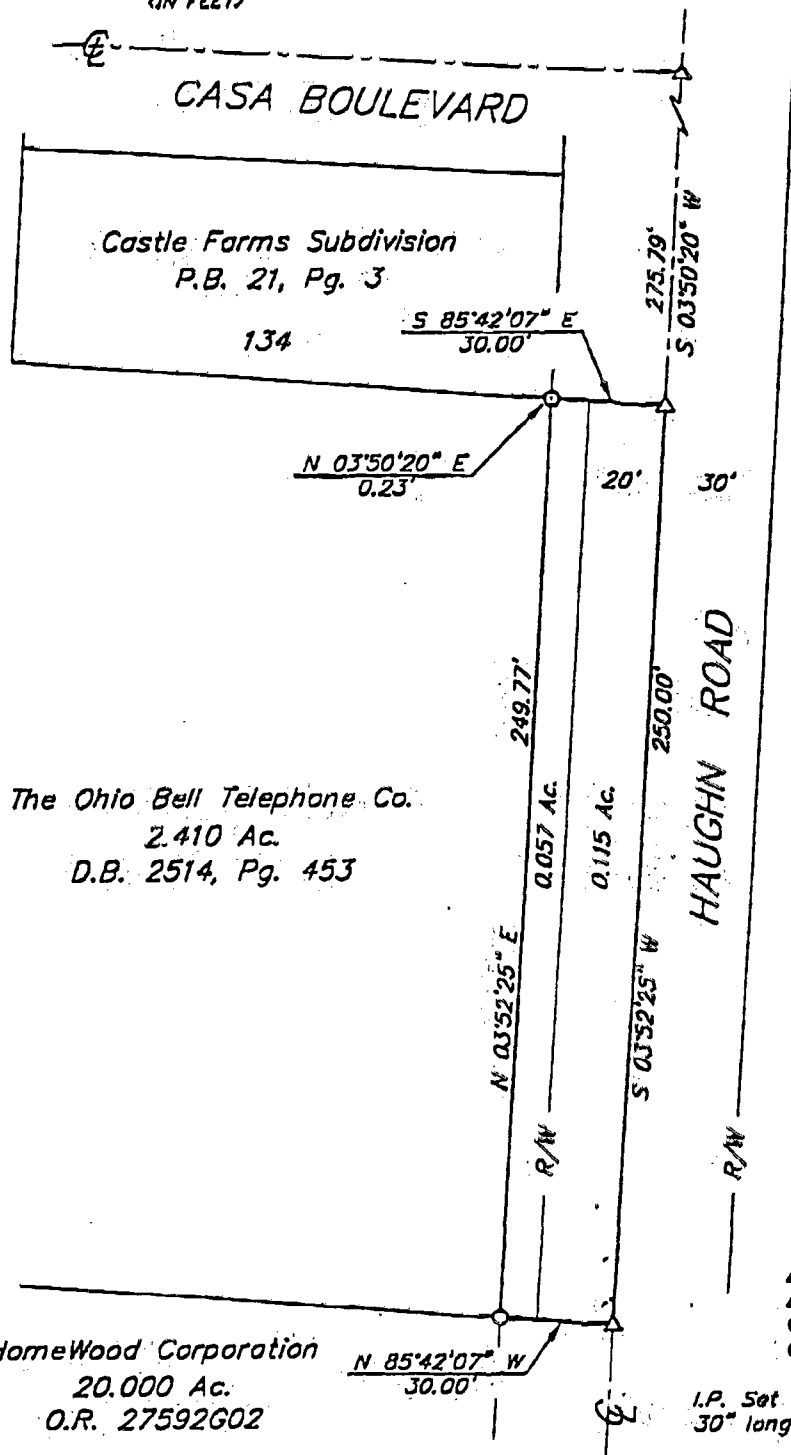
SCALE 1" = 40'

AUGUST 15, 1997

RECORD REFERENCES



GRAPHIC SCALE
 (IN FEET)



- ▲ = P.K. Nail Fnd.
- △ = P.K. Nail Set
- = I.P. Fnd.
- = I.P. Set

I.P. Set are 3/4" O.D. Iron Pin
 30" long w/cap inscribed E.M.H.&T.

BASIS OF BEARINGS: The bearings shown on this plat are based on the same meridian as the plat "Haover Crossing Section 5" of record in Plat Book 80, Page 99, in which the centerline of Haughn Road has a bearing of North $03^{\circ}48'35''$ East, Recorder's Office, Franklin County, Ohio.

E.M.H.&T. INC.

by Clark E. White
 Professional Surveyor No. 7868

REVISION OF 05 - AUGUST 15, 1997 - 10:23 AM
 E.M.H.&T. INC. - 1000 N. HIGHWAY 100 - COLUMBUS, OHIO 43221

80 356 860