

**PLAT OF 0.007 ACRE TRACT
 BEING IN LOT NO. 51
 OF CASTLE FARMS SUBDIVISION
 CITY OF GROVE CITY, FRANKLIN COUNTY, OHIO**

SCALE 1" = 20'

FEBRUARY 7, 1997

RECORD REFERENCES

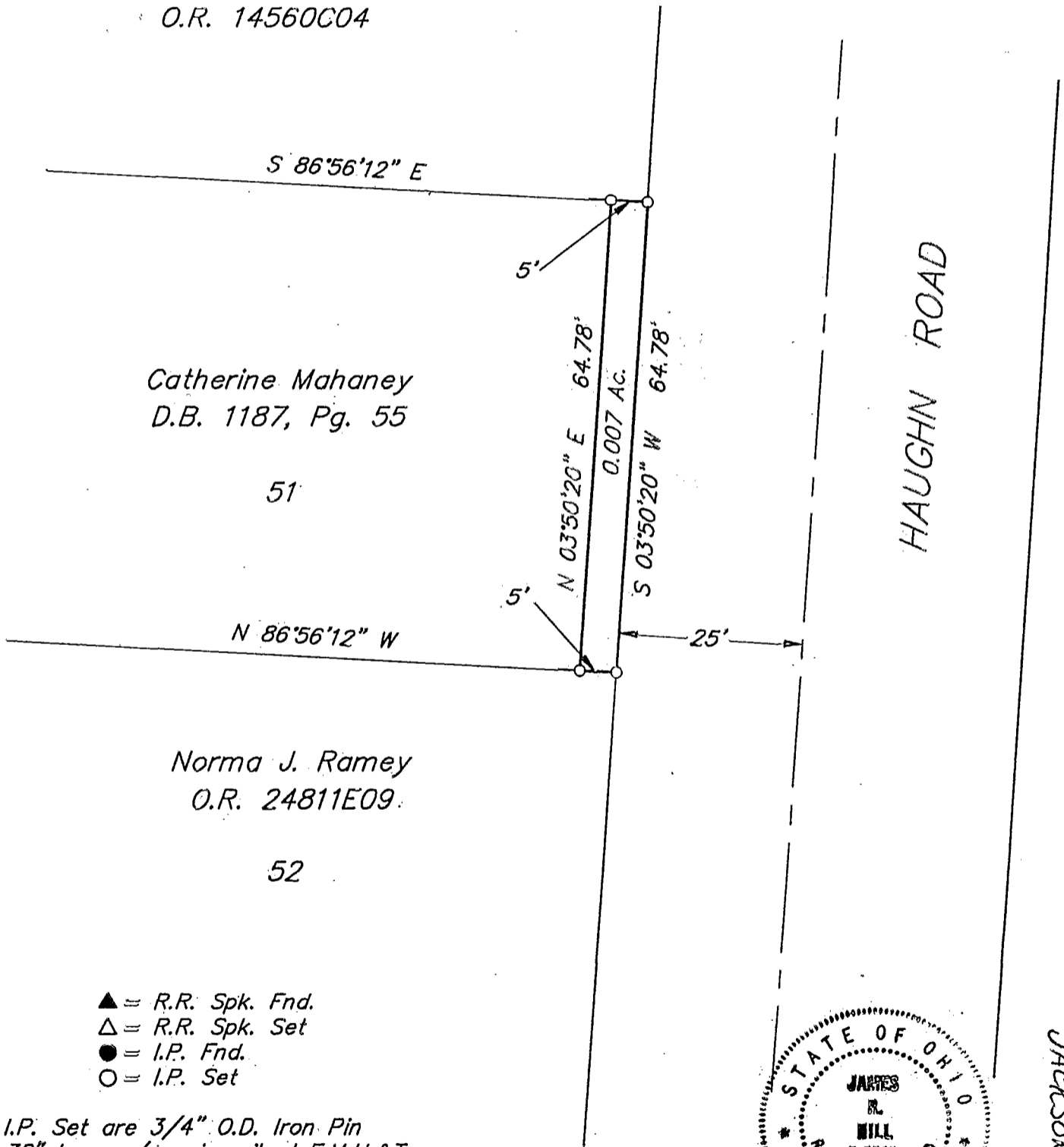
P.B. 21, P. 3



GRAPHIC SCALE
 (IN FEET)



Kenneth E. Grimes, Trustee
 7.000 Ac.
 O.R. 14560C04



Catherine Mahaney
 D.B. 1187, Pg. 55

51

Norma J. Ramey
 O.R. 24811E09

52

HAUGHN ROAD

- ▲ = R.R. Spk. Fnd.
- △ = R.R. Spk. Set
- = I.P. Fnd.
- = I.P. Set

I.P. Set are 3/4" O.D. Iron Pin
 30" long w/cap inscribed E.M.H.&T.



E.M.H.&T. INC.

By *James R. Hill*
 Professional Surveyor No. 6919

JACKSON 90356825

BASIS OF BEARINGS: The bearings shown on this plat are based on the same meridian as the plat "Hoover Crossing Section 5" of record in Plat Book 80, Page 99, in which the centerline of Haughn Road has a bearing of North 03°48'35" East, Recorder's Office, Franklin County, Ohio.