

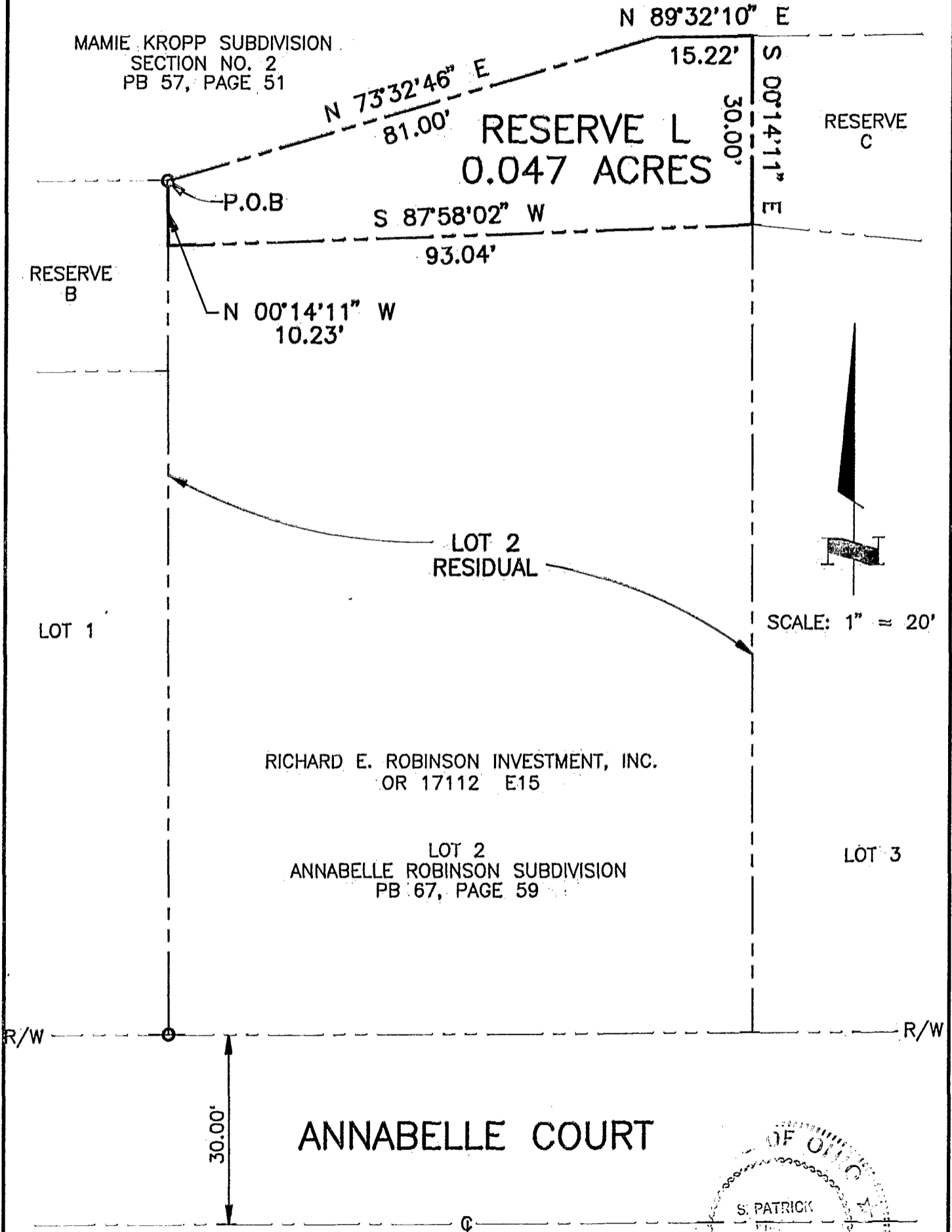
M-86-BBB

180356825
180356800

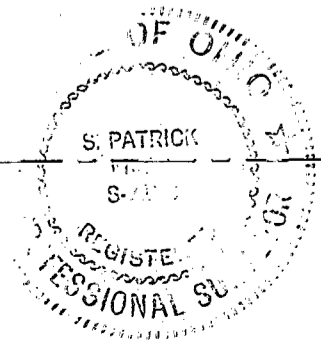
PLAT PREPARED BY
BURGESS & NIPLE, LIMITED
ENGINEERS & ARCHITECTS
COLUMBUS, OHIO
FOR

RICHARD E. ROBINSON INVESTMENT, INC.

THE BEARINGS USED HEREIN ARE BASED ON THE PLAT OF ANNABELLE ROBINSON SUBDIVISION IN PLAT BOOK 67, PAGE 59, FRANKLIN COUNTY RECORDER'S OFFICE.



BY: *S. Patrick Mills* 13 Sep 94
S. PATRICK MILLS, P.S. No. 7158 DATE



M-86-BBB