

18035 6800
18035 6825

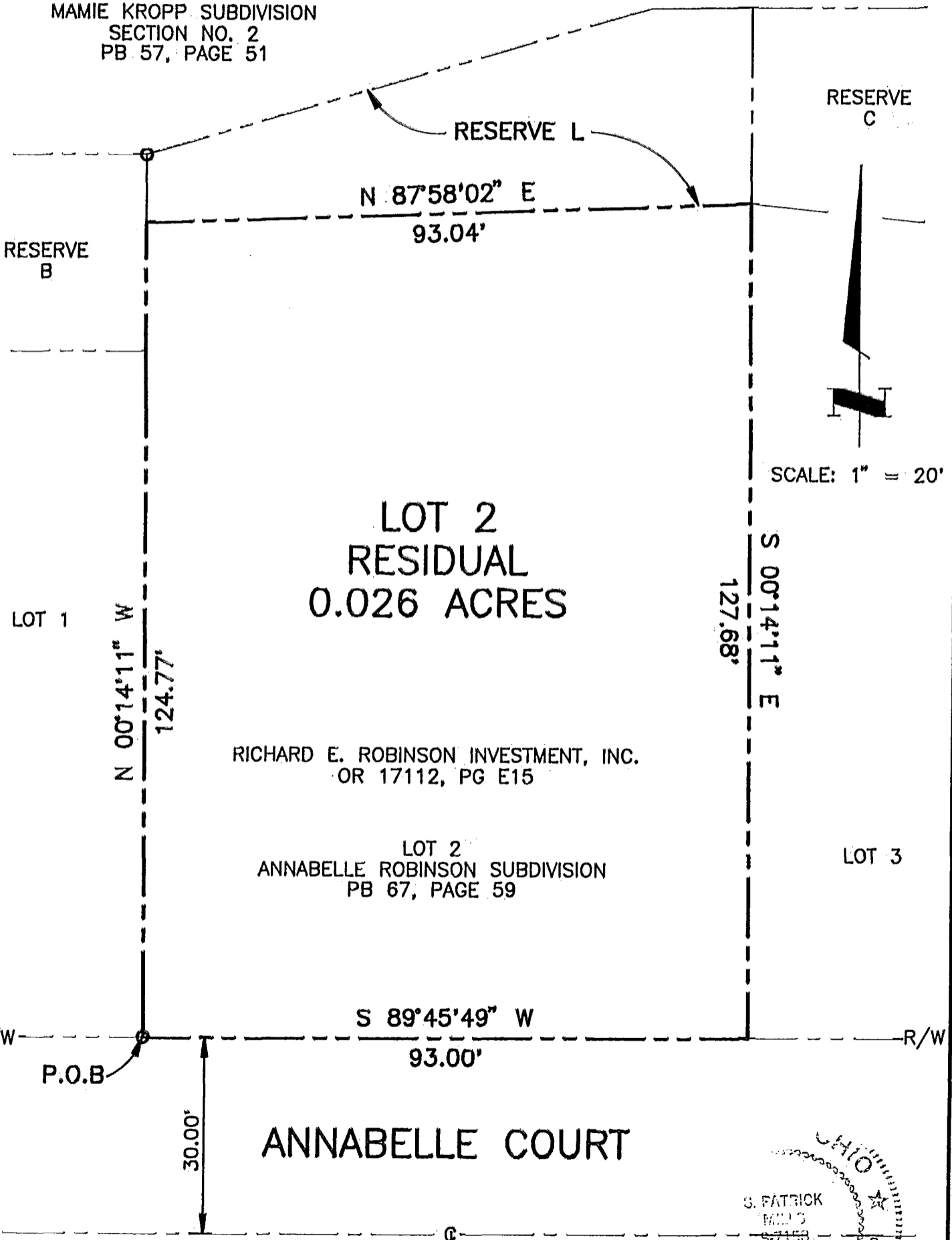
M-86-BBB

PLAT PREPARED BY
BURGESS & NIPLE, LIMITED
ENGINEERS & ARCHITECTS
COLUMBUS, OHIO
FOR

RICHARD E. ROBINSON INVESTMENT, INC.

THE BEARINGS USED HEREIN ARE BASED ON THE PLAT OF ANNABELLE ROBINSON SUBDIVISION IN PLAT BOOK 67, PAGE 59, FRANKLIN COUNTY RECORDER'S OFFICE.

MAMIE KROPP SUBDIVISION
SECTION NO. 2
PB 57, PAGE 51



BY: *S. Patrick Mills*
S. PATRICK MILLS, P.S. No. 7158

13 Sep 94
DATE



M-86-BBB