

SURVEY OF 0.050 ACRE TRACT
 LOCATED IN
VIRGINIA MILITARY SURVEY NO. 1383
CITY OF GROVE CITY
COUNTY OF FRANKLIN, STATE OF OHIO

SCALE 1" = 30'

APRIL 24, 1995

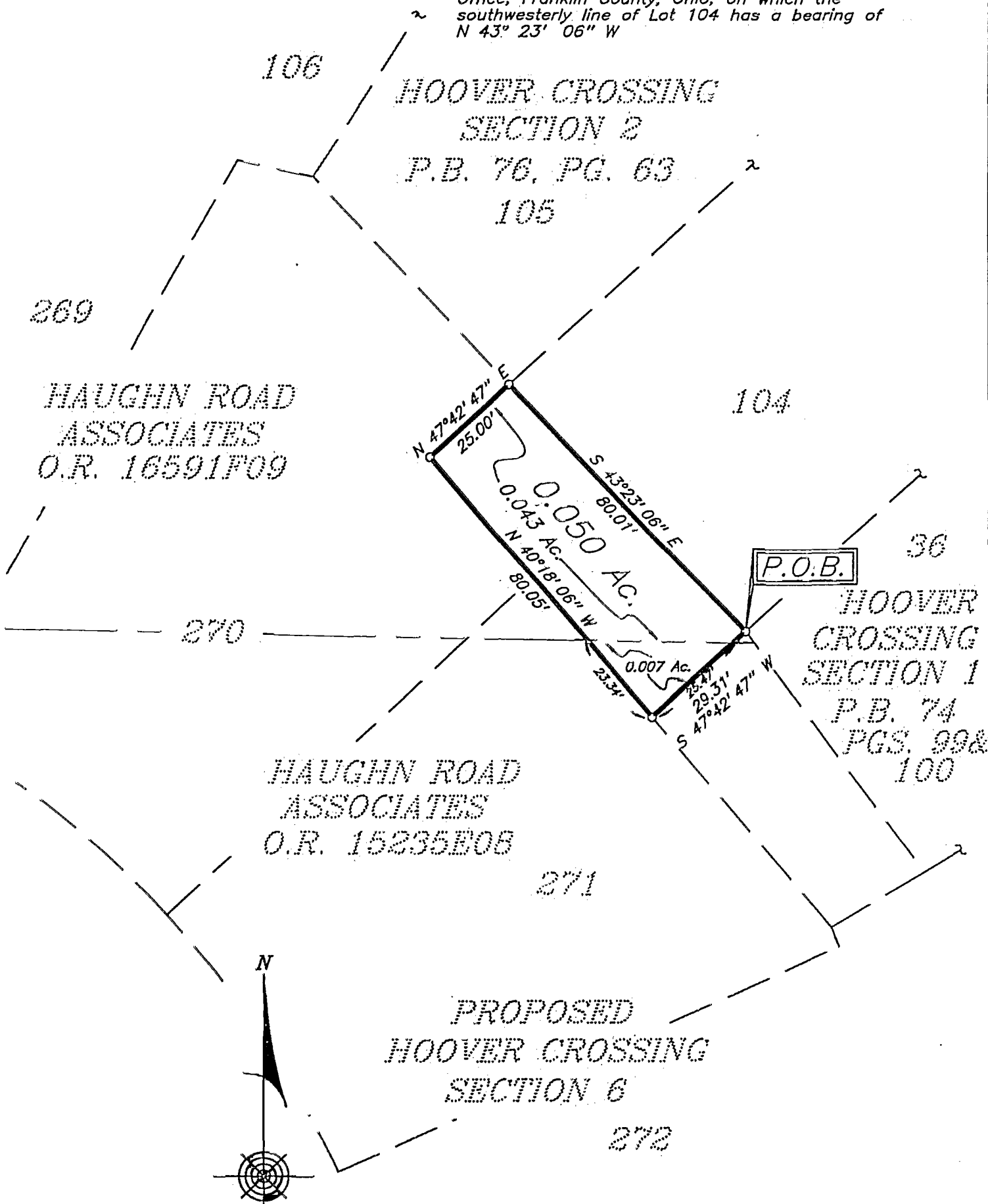
IRON PIN

RECORD REFERENCES O.R. 16591 F09, O.R. 15235 E08



Graphic Scale: 1" = 30'

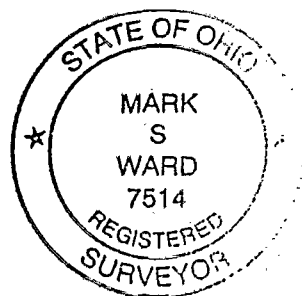
BASIS OF BEARINGS: The bearings shown hereon are based on the same meridian as those shown on the subdivision plat entitled "Hoover Crossing Section 2" of record in Plat Book 76, Page 63, Recorder's Office, Franklin County, Ohio, on which the southwesterly line of Lot 104 has a bearing of N 43° 23' 06" W



HAUGHN ROAD ASSOCIATES
O.R. 16591F09

HAUGHN ROAD ASSOCIATES
O.R. 15235E08

P.O.B.



E.M.H.&T. INC.

By Mark S. Ward
Professional Surveyor No. 7514

W. C. K. S. C.
 80 606 800
 0-33-c