

SURVEY OF 0.029 ACRE PARCEL
 LOCATED IN
 VIRGINIA MILITARY SURVEY NO. 1383
 CITY OF GROVE CITY, FRANKLIN COUNTY, OHIO

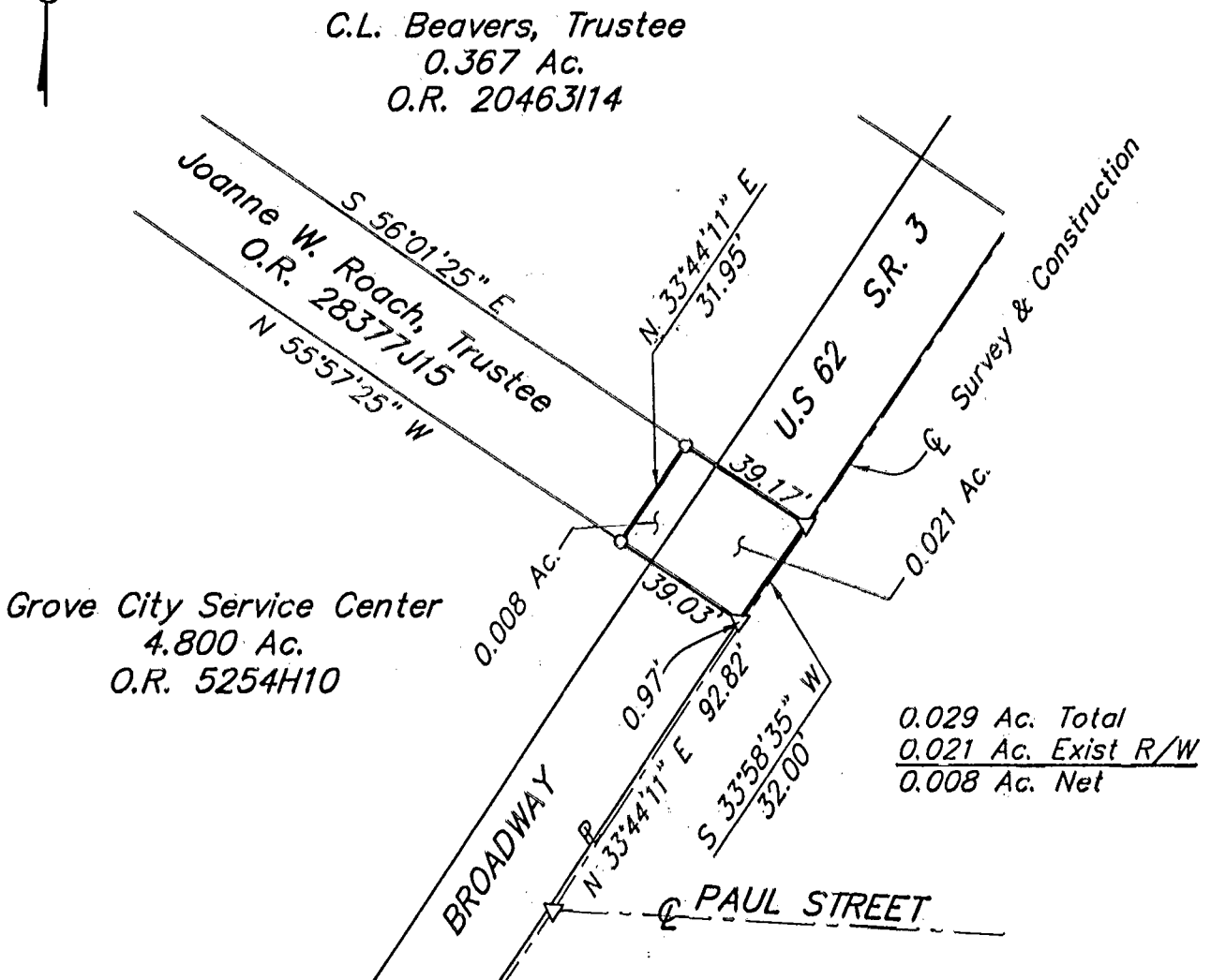
SCALE 1" = 50'

DECEMBER 10, 1997

RECORD REFERENCES _____



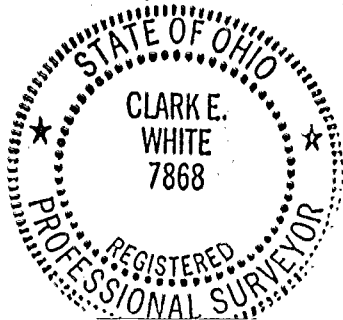
GRAPHIC SCALE
(IN FEET)



BASIS OF BEARINGS: The bearings shown hereon are based on The Ohio State Plane Coordinate System as per NAD83. Control for bearings was from coordinates of monuments Frank 24 and Frank 124, having a bearing of North 85°57'59" West, established by the Franklin County Engineering Department, using Global Positioning procedures and equipment.

- ▲ P.K. Nail Fnd.
- △ P.K. Nail Set
- I.P. Fnd.
- I.P. Set

I.P. set are 3/4" O.D. Iron Pin
 30" long w/cap inscribed EMH&T.



E.M.H.&T. INC.

By *Clark E. White*
 Professional Surveyor No. 7868

79 856 825