

79 856 825

**SURVEY OF 0.317 ACRE PARCEL
LOCATED IN
VIRGINIA MILITARY SURVEY NO. 1383
CITY OF GROVE CITY, FRANKLIN COUNTY, OHIO**

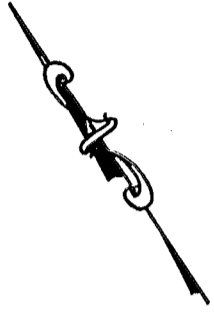
RECORD REFERENCES

DECEMBER 10, 1997

SCALE 1" = 50'



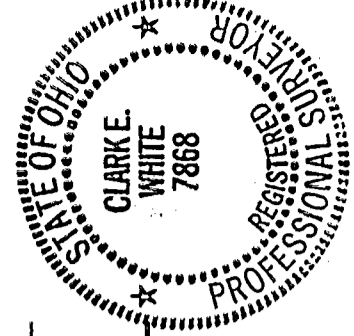
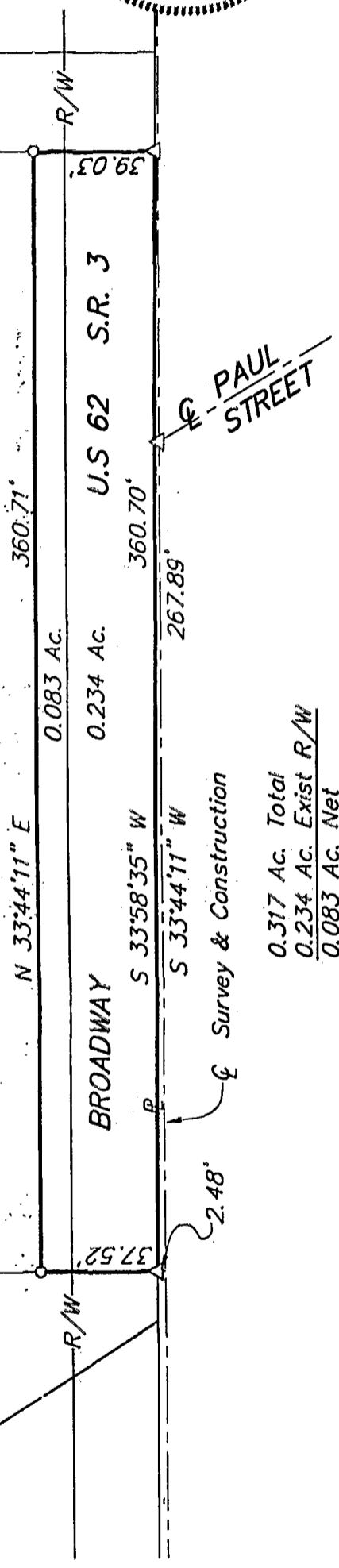
GRAPHIC SCALE
(IN FEET)



Muriel H. Nance
2.381 Ac.
D.B. 3707, Pg. 125

Grove City Service Center
4.800 Ac.
O.R. 5254H10

Joanne W. Roach, Trustee
O.R. 28377J15



- ▲ P.K. Nail Fnd.
- △ P.K. Nail Set
- I.P. Fnd.
- I.P. Set

I.P. set are 3/4" O.D. Iron Pin
30" long w/cap inscribed EMH&T.

BASIS OF BEARINGS: The bearings shown hereon are based on The Ohio State Plane Coordinate System as per NAD83. Control for bearings was from coordinates of monuments Frank 24 and Frank 124, having a bearing of North 85°57'59" West, established by the Franklin County Engineering Department, using Global Positioning procedures and equipment.

E.M.H.&T. INC.

By *Clarke E. White*

Professional Surveyor No. 7868