



**SURVEY OF 0.450 ACRE PARCEL**  
 LOCATED IN  
**VIRGINIA MILITARY SURVEY NO. 1383**  
 CITY OF GROVE CITY, FRANKLIN COUNTY, OHIO

79 856 82 S

RECORD REFERENCES

DECEMBER 10, 1997

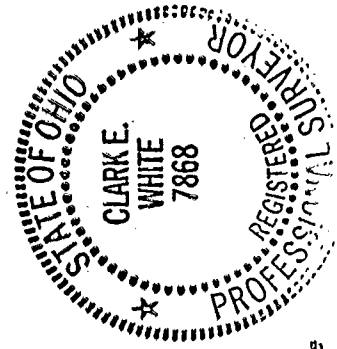
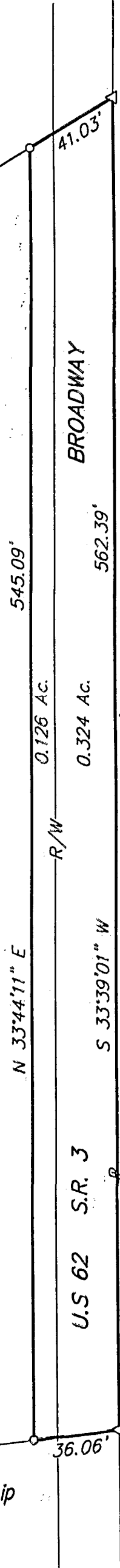
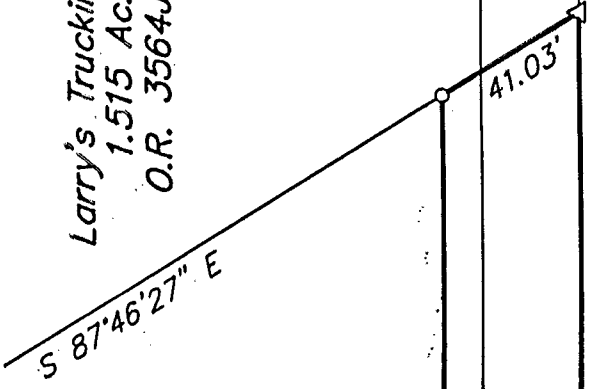
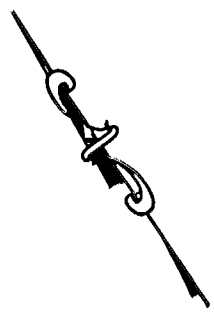
SCALE 1" = 50'



Walnut Grove Apartment Partnership  
 0.890 Ac.  
 O.R. 10935D12

Larry W. Beavers  
 4.604 Ac.  
 O.R. 25393I17

Larry's Trucking Inc.  
 1.515 Ac.  
 O.R. 3564J04



0.450 Ac. Total  
 0.324 Ac. Exist R/W  
 0.126 Ac. Net

- ▲ P.K. Nail Fnd.
- △ P.K. Nail Set
- I.P. Fnd.
- I.P. Set

**BASIS OF BEARINGS:** The bearings shown hereon are based on the Ohio State Plane Coordinate System as per MAD83. Control for bearings was from coordinates of monuments Frank 24 and Frank 124, having a bearing of North 85°57'59" West, established by the Franklin County Engineering Department, using Global Positioning procedures and equipment.

**E.M.H.&T. INC.**

By *Clark E. White*  
 Professional Surveyor No. 7868

I.P. set are 3/4" O.D. Iron Pin  
 30" long w/cap inscribed E.M.H.&T.