



SURVEY OF 0.083 ACRE PARCEL
 LOCATED IN
 VIRGINIA MILITARY SURVEY NO. 1383
 CITY OF GROVE CITY, FRANKLIN COUNTY, OHIO

79 856 825

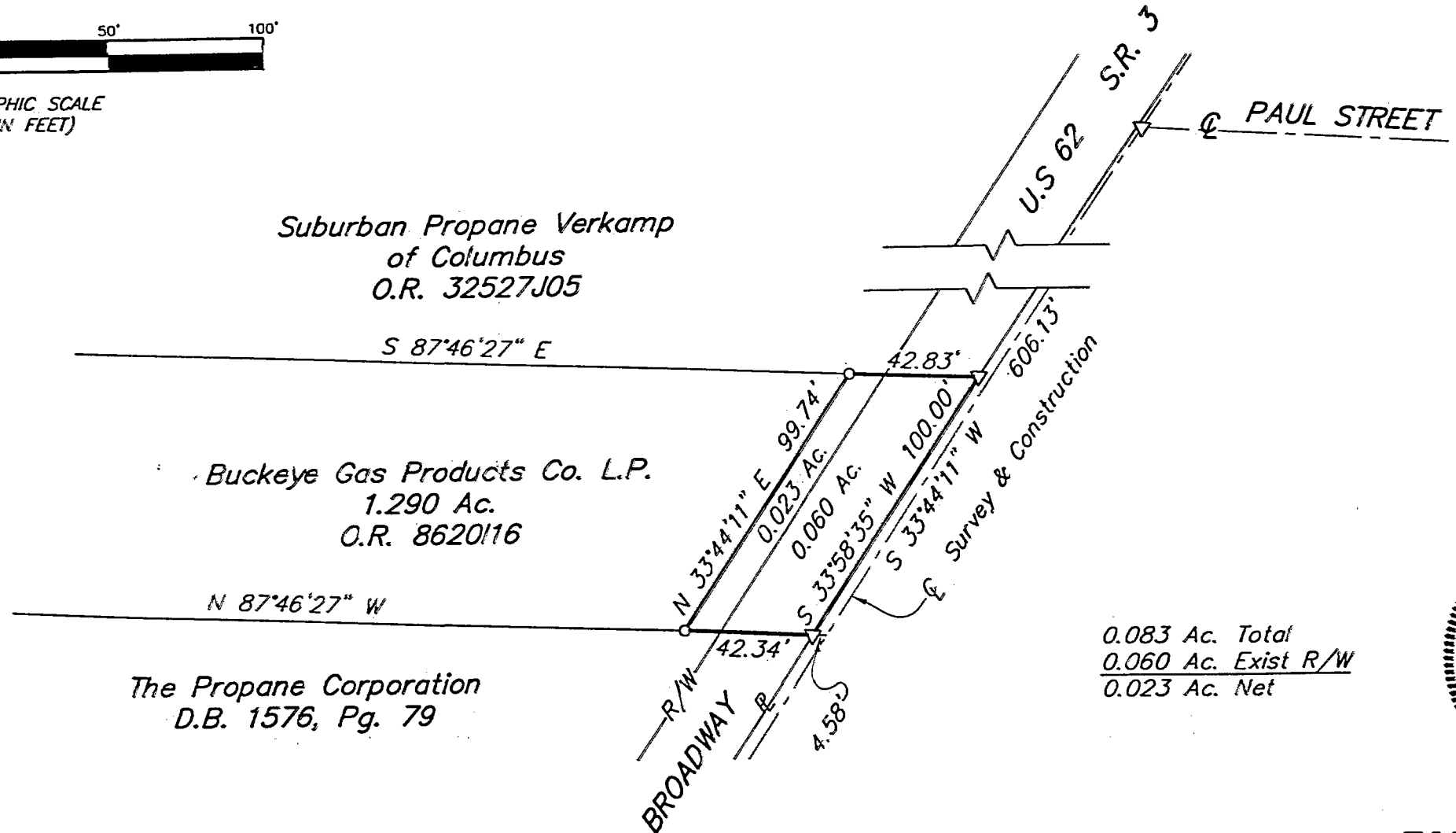
SCALE 1" = 50'

DECEMBER 10, 1997

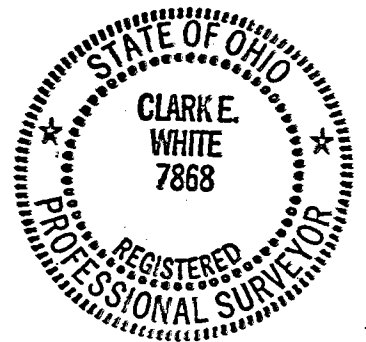
RECORD REFERENCES _____



GRAPHIC SCALE
(IN FEET)



0.083 Ac. Total
 0.060 Ac. Exist R/W
 0.023 Ac. Net



- ▲ P.K. Nail Fnd.
- △ P.K. Nail Set
- I.P. Fnd.
- I.P. Set

I.P. set are 3/4" O.D. Iron Pin
 30" long w/cap inscribed EMH&T.

BASIS OF BEARINGS: The bearings shown hereon are based on The Ohio State Plane Coordinate System as per NAD83. Control for bearings was from coordinates of monuments Frank 24 and Frank 124, having a bearing of North 85°57'59" West, established by the Franklin County Engineering Department, using Global Positioning procedures and equipment.

E.M.H.&T. INC.

By Clark E. White
 Professional Surveyor No. 7868