

**SURVEY OF 0.122 ACRE PARCEL**  
LOCATED IN  
**VIRGINIA MILITARY SURVEY NO. 1383**  
CITY OF GROVE CITY, FRANKLIN COUNTY, OHIO

79 856 825

SCALE 1" = 50'

DECEMBER 10, 1997

RECORD REFERENCES

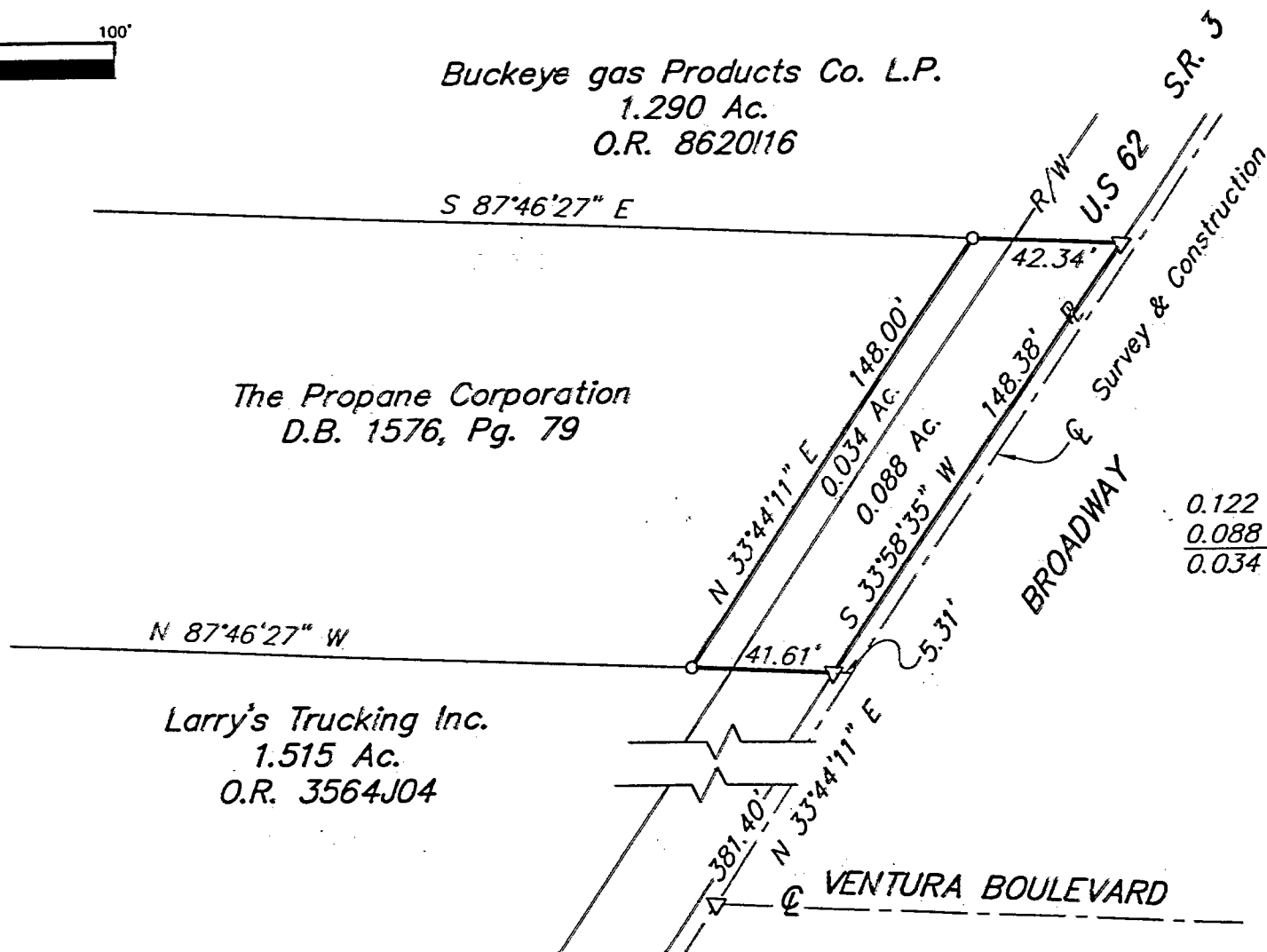


GRAPHIC SCALE  
(IN FEET)

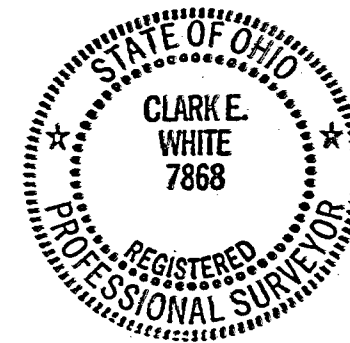
**Buckeye gas Products Co. L.P.**  
1.290 Ac.  
O.R. 8620116

**The Propane Corporation**  
D.B. 1576, Pg. 79

**Larry's Trucking Inc.**  
1.515 Ac.  
O.R. 3564J04



0.122 Ac. Total  
0.088 Ac. Exist R/W  
0.034 Ac. Net



- ▲ P.K. Nail Fnd.
- △ P.K. Nail Set
- I.P. Fnd.
- I.P. Set

I.P. set are 3/4" O.D. Iron Pin  
30" long w/cap inscribed EMH&T.

**BASIS OF BEARINGS:** The bearings shown hereon are based on The Ohio State Plane Coordinate System as per NAD83. Control for bearings was from coordinates of monuments Frank 24 and Frank 124, having a bearing of North 85°57'59" West, established by the Franklin County Engineering Department, using Global Positioning procedures and equipment.

**E.M.H.&T. INC.**

By Clark E. White  
Professional Surveyor No. 7868

DATE: 12/10/97 TIME: 12:10 PM