



SURVEY OF 0.095 ACRE PARCEL  
LOCATED IN  
VIRGINIA MILITARY SURVEY NO. 1383  
CITY OF GROVE CITY, FRANKLIN COUNTY, OHIO

SCALE 1" = 50'

DECEMBER 10, 1997

RECORD REFERENCES



GRAPHIC SCALE  
(IN FEET)

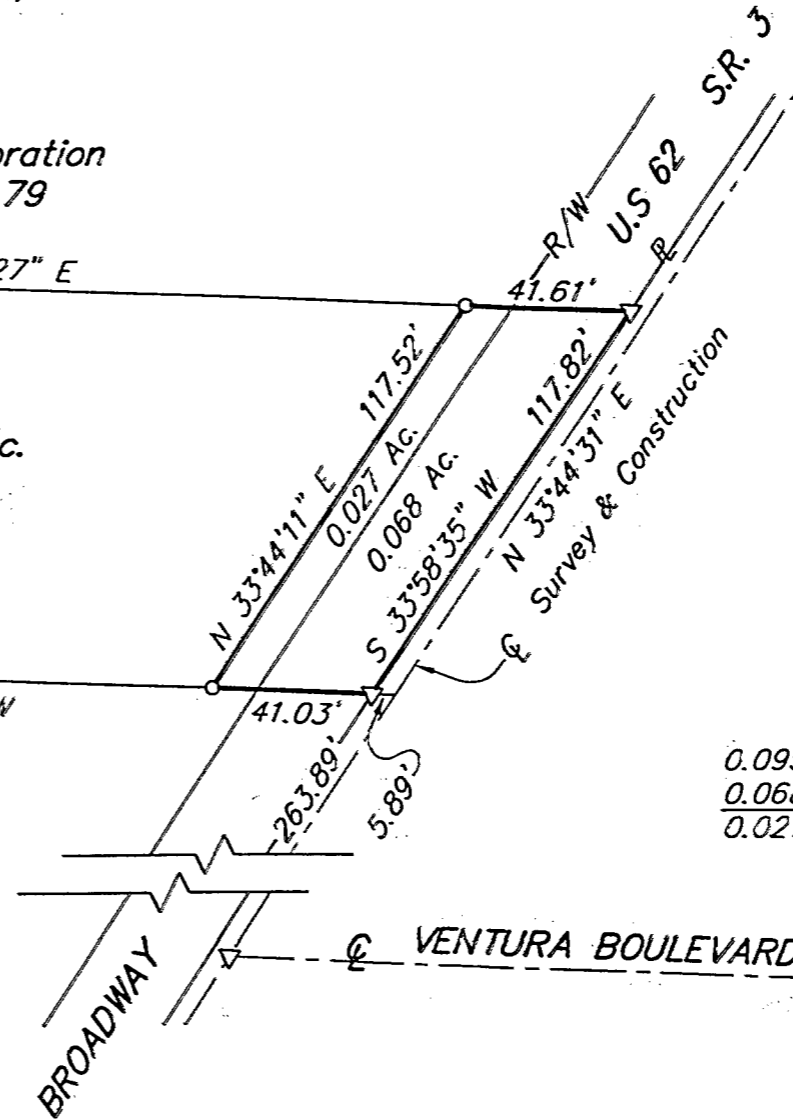
The Propane Corporation  
D.B. 1576, Pg. 79

S 87°46'27" E

Larry's Trucking Inc.  
1.515 Ac.  
O.R. 3564J04

N 87°46'27" W

Larry W. Beavers  
4.604 Ac.  
O.R. 25393117



0.095 Ac. Total  
0.068 Ac. Exist R/W  
0.027 Ac. Net



- ▲ P.K. Nail Fnd.
- △ P.K. Nail Set
- I.P. Fnd.
- I.P. Set

I.P. set are 3/4" O.D. Iron Pin  
30" long w/cap inscribed EMH&T.

BASIS OF BEARINGS: The bearings shown hereon are based on The Ohio State Plane Coordinate System as per NAD83. Control for bearings was from coordinates of monuments Frank 24 and Frank 124, having a bearing of North 85°57'59" West, established by the Franklin County Engineering Department, using Global Positioning procedures and equipment.

E.M.H.&T. INC.

By Clark E. White  
Professional Surveyor No. 7868