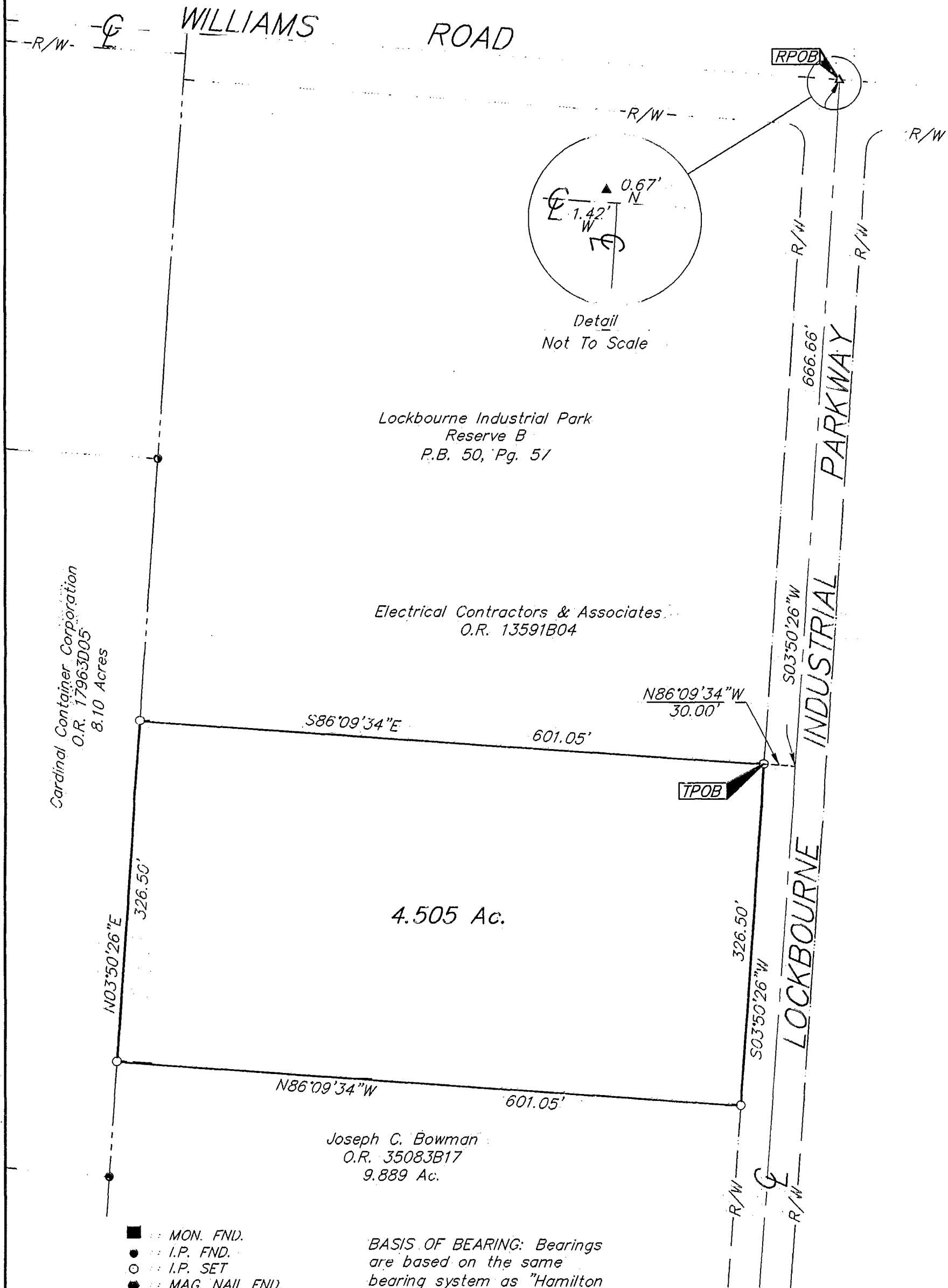


SCALE 1" = 100'

MARCH 11, 2002



Cardinal Container Corporation  
 O.R. 17963D05  
 8.10 Acres

Lockbourne Industrial Park  
 Reserve B  
 P.B. 50, Pg. 51

Electrical Contractors & Associates  
 O.R. 13591B04

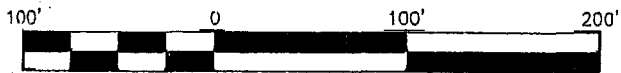
4.505 Ac.

Joseph C. Bowman  
 O.R. 35083B17  
 9.889 Ac.

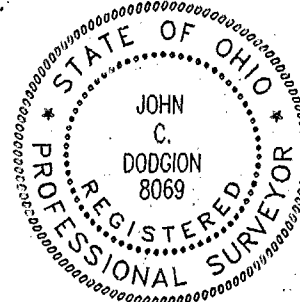
- MON. FND.
- I.P. FND.
- I.P. SET
- MAG. NAIL FND.
- MAG. NAIL SET
- ▲ R.R. SPK. FND.
- △ R.R. SPK. SET
- P.K. NAIL FND.

BASIS OF BEARING: Bearings  
 are based on the same  
 bearing system as "Hamilton  
 Lakes North Section 1" as  
 recorded in P.B. 95, Pg. 7-8.

I.P.S Set are 13/16" I.D. Iron  
 pipe W/ cap inscribed EMHT INC.



GRAPHIC SCALE  
 (IN FEET)



By *John C. Dodgion*  
 Professional Surveyor No. 8069