

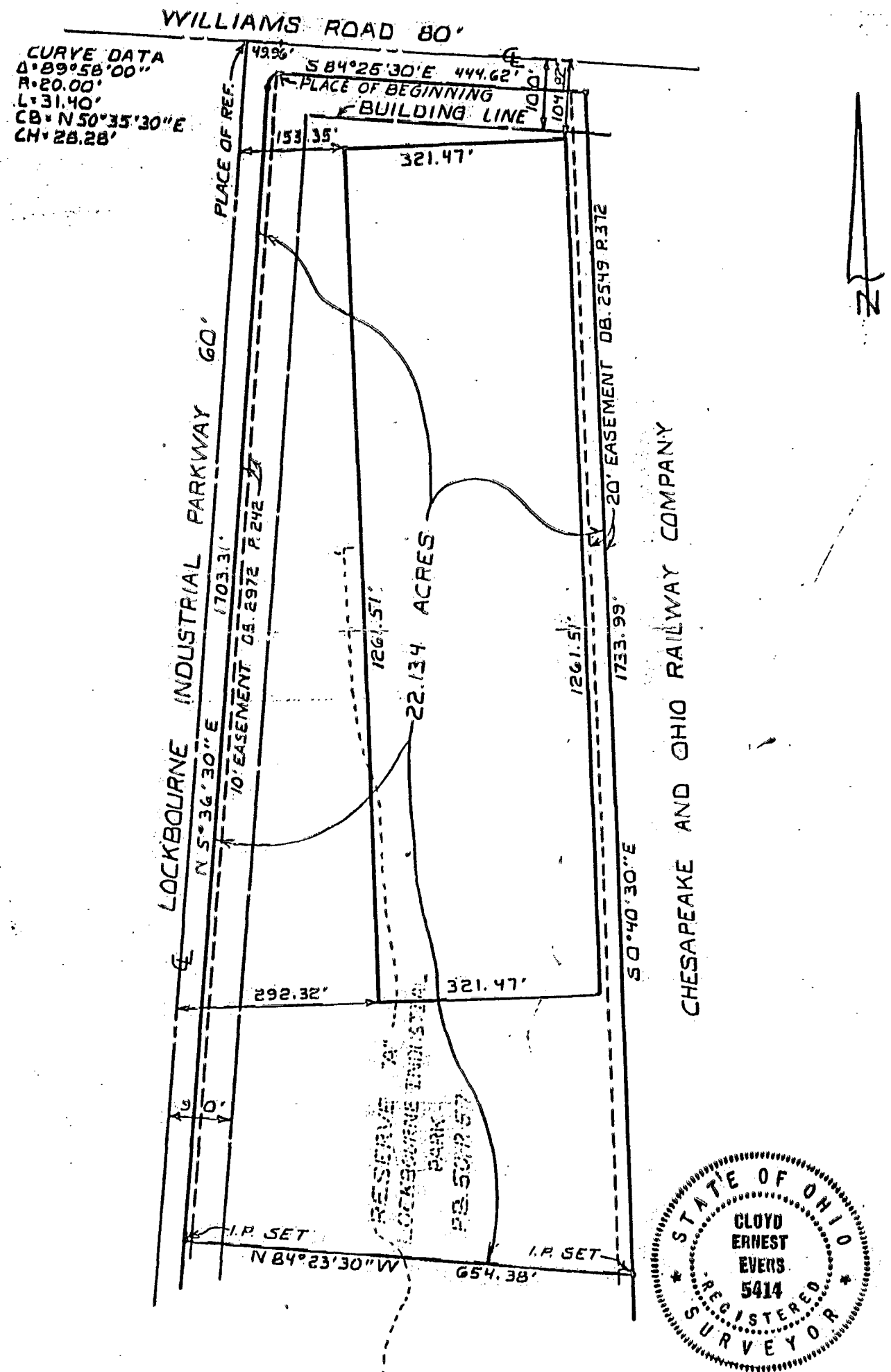
18360 6875  
 18385 6875  
 18360 6850  
 18385 6850

N-127 Lt

**HOCKADEN AND ASSOCIATES, INC.**

CONSULTING ENGINEERS  
 883 N. CASSADY AVENUE  
 COLUMBUS, OHIO 43219

(614) 252-0993



WE HEREBY CERTIFY THAT THE FOREGOING PLAT WAS PREPARED FROM AN ACTUAL FIELD SURVEY OF THE PREMISES.

SCALE 1" = 200'

SURV'D.	DRAWN	CHECKED
D.M.	B.O.	C.E.E.

DATE 8-20-87	P-747-S
REVISED DATES	ORDER NUMBERS

HOCKADEN AND ASSOCIATES, INC.  
 CONSULTING ENGINEERS  
 By *Cloyd E. Evers*  
 REGISTERED SURVEYOR