

SURVEY OF PART OF RESERVE "B"
LOCKBOURNE INDUSTRIAL PARK
 CITY OF COLUMBUS, FRANKLIN COUNTY, OHIO

SCALE 1" = 100'

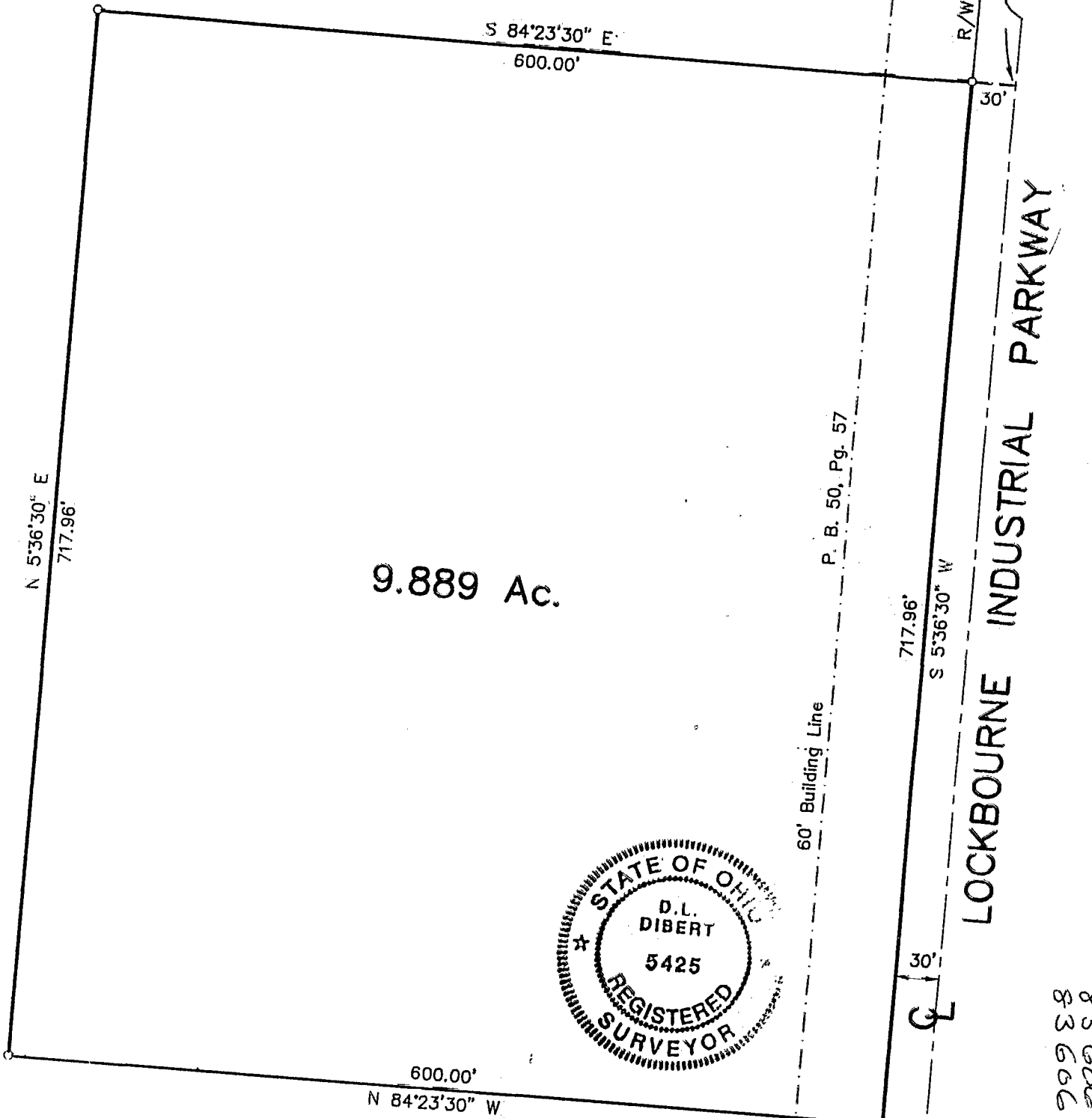
MARCH 20, 1997



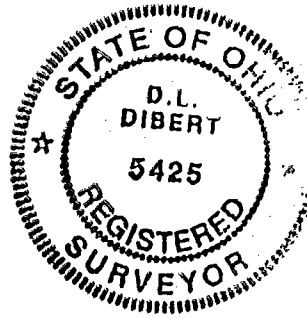
The bearings shown hereon are based on the same meridian as the northerly right-of-way line of South Columbus Airport Road (N 84° 25' 30" W) of record in Plat Book 50, Page 57.

LOCKBOURNE INDUSTRIAL PARK
 RESERVE "B"
 P. B. 50, Pg. 57

WILLIAMS ROAD



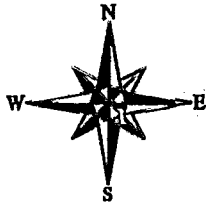
9.889 Ac.



HAMILTON
 83666850
 83666875

- ▲ = R.R. Spk. Fnd.
- △ = RR Spk. Set
- = I.P. Fnd.
- = I.P. Set

I.P. Set are 3/4" O.D. Iron Pin
 30" long w/cap. inscribed EMH&T.



EMH&T. INC.

By Ronald L. Dibert
 Professional Surveyor No. 5425