

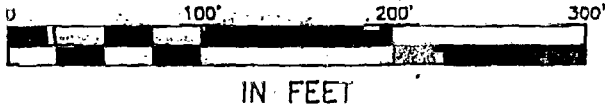
SURVEY OF PART OF RESERVE "B" LOCKBOURNE INDUSTRIAL PARK

CITY OF COLUMBUS, FRANKLIN COUNTY, OHIO

SCALE 1" = 100'

MARCH 13, 2000

83606850



Current zoning for subject tract is M-1.

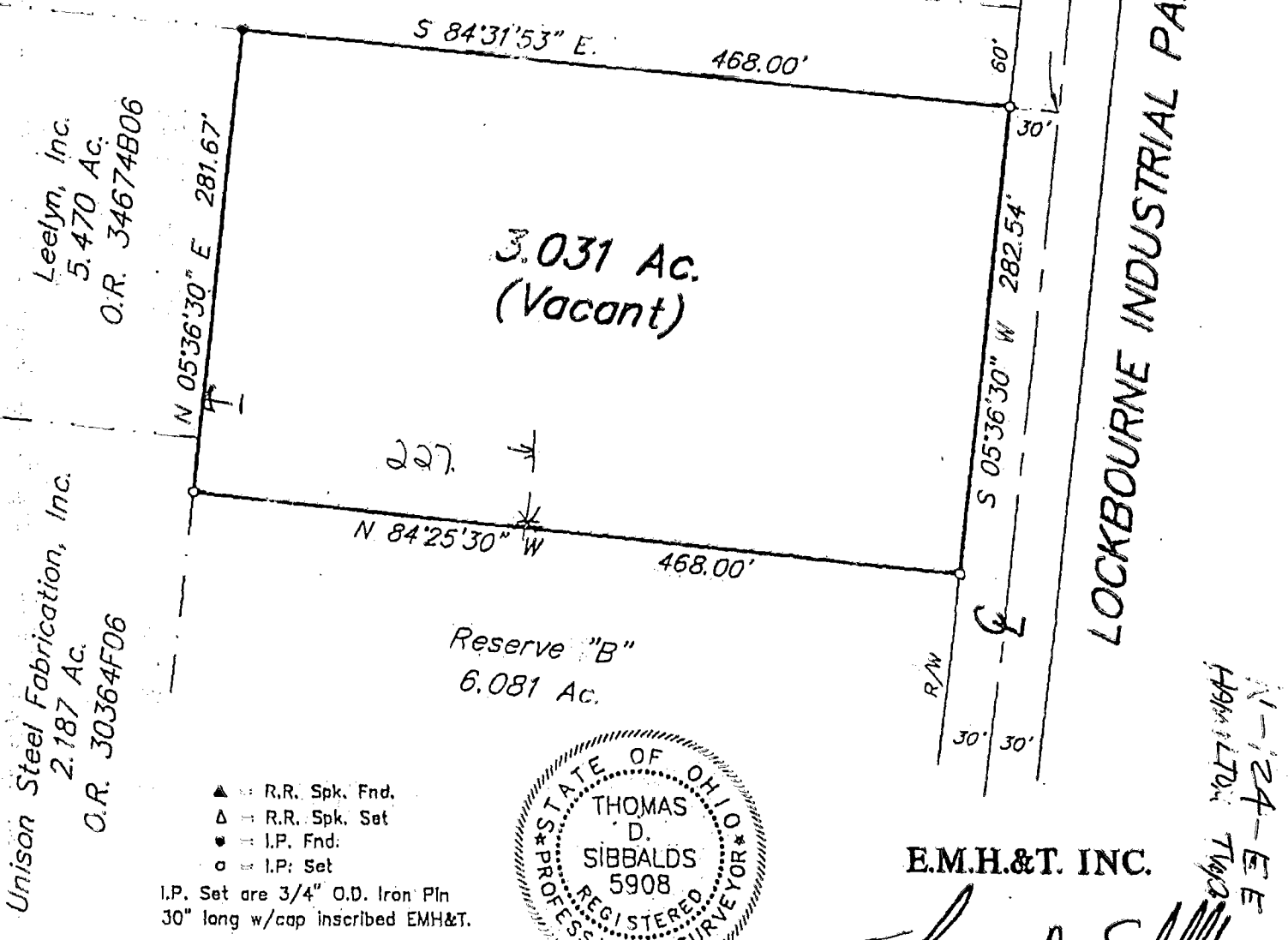
BASIS OF BEARING

The bearings shown hereon are based on the same meridian as the northerly right-of-way line of South Columbus Airport Road (N 84°25'30" W) of record in Plat Book 50, Page 57.

According to the Federal Emergency Management Agency's Flood Insurance Rate Map (Dated August 2, 1996), the property surveyed and shown hereon lies within Zone X (area determined to be outside 500 year floodplain); Community Panel Number 39049C 0265 G.

Reserve "B"

\\SERVERS\SURVEY\PROJECT\20000148.01\DWG\000148.S.DWG - O XREFS - PLOTTED BY RPARKER - March 21, 2000 - 9:22 AM



Leelyn, Inc.
5.470 Ac.
O.R. 34674B06

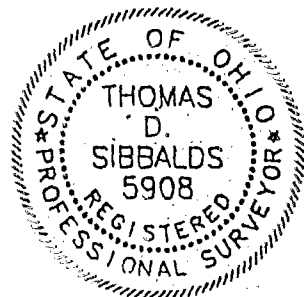
Unison Steel Fabrication, Inc.
2.187 Ac.
O.R. 30364F06

3.031 Ac.
(Vacant)

Reserve "B"
6.081 Ac.

- ▲ = R.R. Spk. Fnd.
- △ = R.R. Spk. Set
- = I.P. Fnd.
- = I.P. Set

I.P. Set are 3/4" O.D. Iron Pin
30" long w/cap inscribed EMH&T.



E.M.H.&T. INC.

By *Thomas D. Sibbalds*
Professional Surveyor No. 5908

N-124-EE
149m170x
TWO