

SURVEY OF PART OF RESERVE "B" LOCKBOURNE INDUSTRIAL PARK

CITY OF COLUMBUS, FRANKLIN COUNTY, OHIO

58611

SCALE 1" = 100'

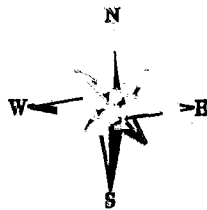
AUGUST 2, 2000

83606850
N 124 EE

83606850



IN FEET



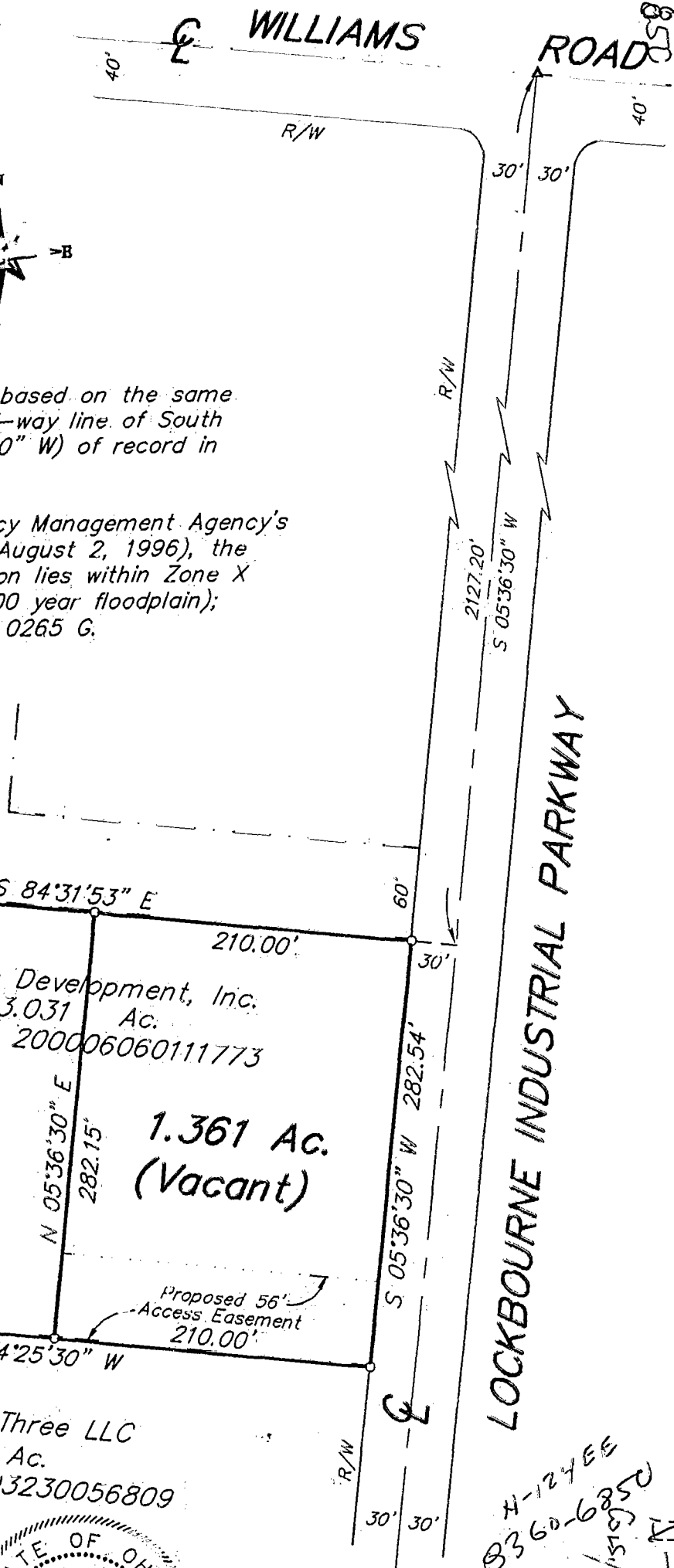
Current zoning for subject tract is M-1.

BASIS OF BEARING

The bearings shown hereon are based on the same meridian as the northerly right-of-way line of South Columbus Airport Road (N 84°25'30" W) of record in Plat Book 50, Page 57.

According to the Federal Emergency Management Agency's Flood Insurance Rate Map (Dated August 2, 1996), the property surveyed and shown hereon lies within Zone X (area determined to be outside 500 year floodplain); Community Panel Number 39049C 0265 G.

Reserve "B"



Leelyn, Inc.
5.470 Ac.
O.R. 34674B06

Unison Steel Fabrication, Inc.
2.187 Ac.
O.R. 30364F06

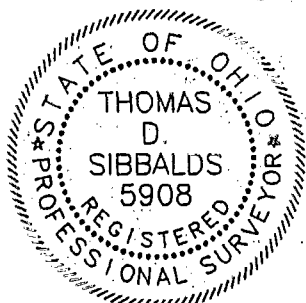
Hyde Development, Inc.
3.031 Ac.
Inst. No. 20000606011773
1.670 Ac. (Vacant)
1.361 Ac. (Vacant)

Lockbourne Three LLC
6.081 Ac.
Inst. No. 200003230056809

Proposed 56' Access Easement
210.00'

- ▲ = R.R. Spk. Fnd.
- △ = R.R. Spk. Set
- = I.P. Fnd.
- = I.P. Set

I.P. Set are 3/4" O.D. Iron Pin
30" long w/cap inscribed EMH&T.



E.M.H.&T. INC.

By *Thomas D. Sibbalds*
Professional Surveyor No. 5908

Handwritten notes: 4-124EE, 83606850, 25655/HAN, 300

SERVER5\SURVEY\PROJECT\20001064\01\DWG\01064BY.DWG - O XREFS: - PLOTTED BY RPARKER - AUGUST 02, 2000 - 8:36 AM