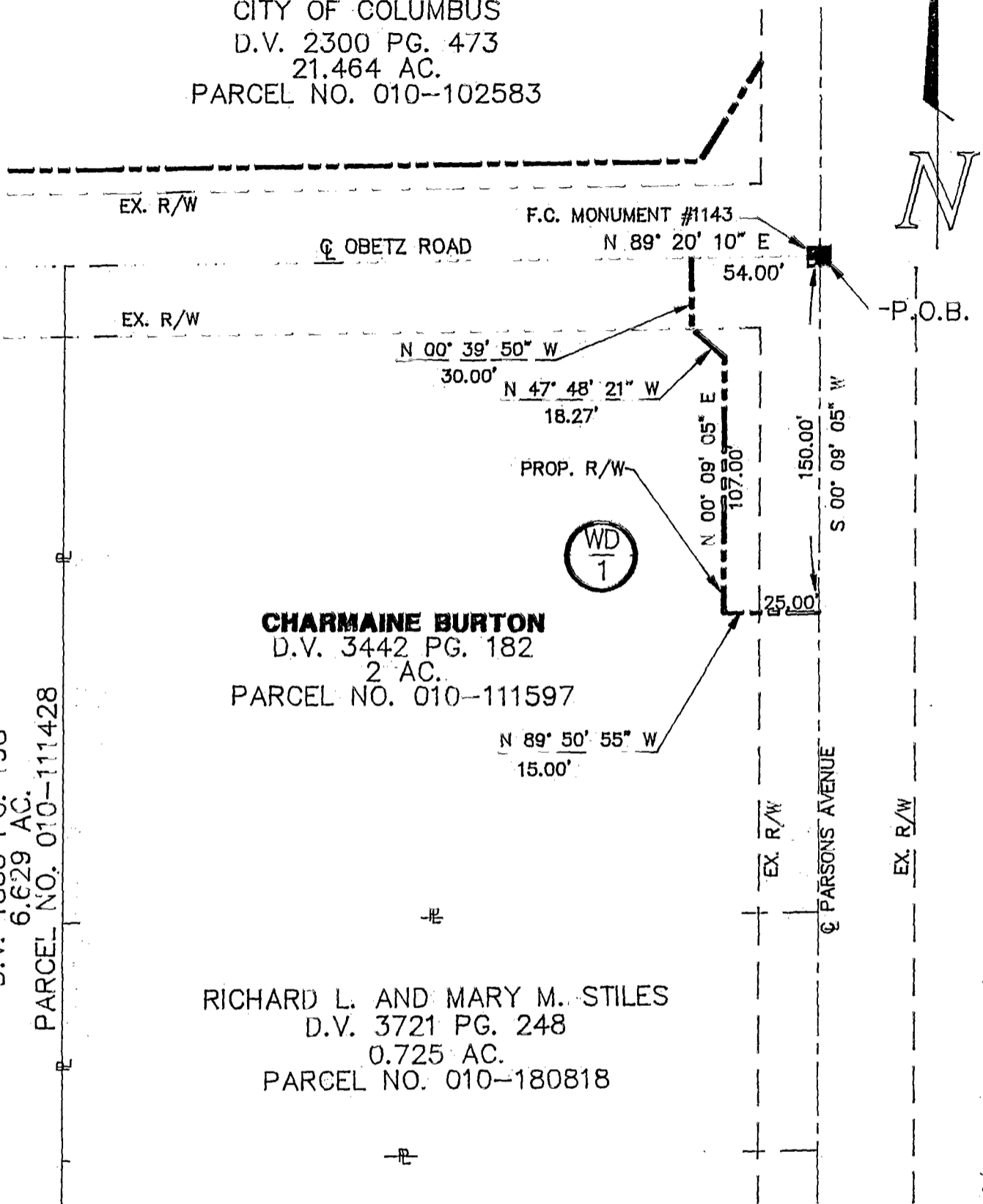


EXHIBIT A

CITY OF COLUMBUS
 D.V. 2300 PG. 473
 21.464 AC.
 PARCEL NO. 010-102583



RONALD L. AND RUTH E. GOTTHARDT
 D.V. 1835 PG. 198
 6.629 AC.
 PARCEL NO. 010-111428

CHARMAINE BURTON
 D.V. 3442 PG. 182
 2 AC.
 PARCEL NO. 010-111597

RICHARD L. AND MARY M. STILES
 D.V. 3721 PG. 248
 0.725 AC.
 PARCEL NO. 010-180818

THE ABOVE DESCRIPTION AND THE BASIS OF BEARINGS ARE S 00° 09' 05" W FOR PARSONS AVENUE FROM A CENTERLINE SURVEY MADE BY PAUL K. MOORE AND ASSOCIATES, REGISTERED SURVEYOR NO. 5883, ON 12/21/93 FOR CONSTRUCTION DRAWINGS FOR GROUP 6 INTERSECTION IMPROVEMENTS, C.I.P. 077. THE PLANS ARE ON FILE WITH THE CITY OF COLUMBUS DIVISION OF ENGINEERING AND CONSTRUCTION, DRAWING 1476-E.

BASIS OF BEARINGS FROM FRANKLIN COUNTY ENGINEER'S MONUMENTS #0013, #1143 AND #1142.



David E. Slagle

| | | |
|--|-------------|------------|
| GROUP 6 INTERSECTION IMPROVEMENTS C.I.P. NO. 077 | | |
| DYNOTEC, INC. 2700 E. DUBLIN-GRANVILLE ROAD, SUITE 6 COLUMBUS, OHIO 43231 | | |
| DATE: 11/07/95 | DWG NO. WD1 | DRAWN: RJS |
| SCALE: 1" = 60' | CHECKED: | |

0-23-B
 11/9/95 8:30 AM 850