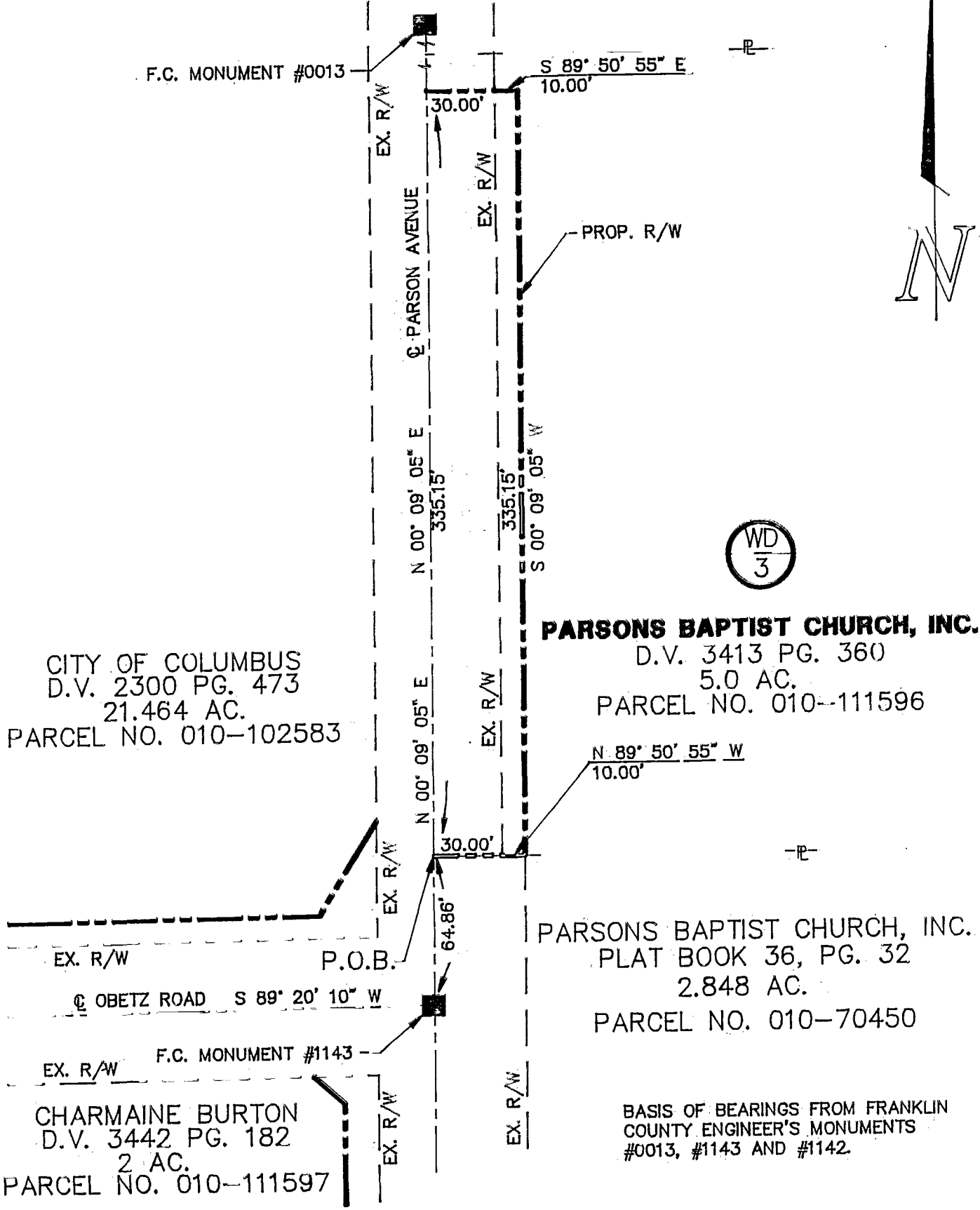


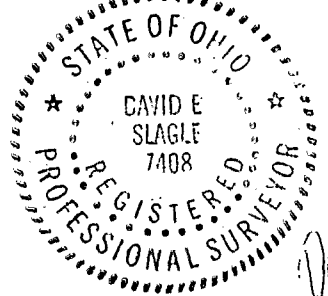
# EXHIBIT A



BASIS OF BEARINGS FROM FRANKLIN COUNTY ENGINEER'S MONUMENTS #0013, #1143 AND #1142.

THE ABOVE DESCRIPTION AND THE BASIS OF BEARINGS ARE  $N 00^{\circ} 09' 05'' E$  FOR PARSONS AVENUE FROM A CENTERLINE SURVEY MADE BY PAUL K. MOORE AND ASSOCIATES, REGISTERED SURVEYOR NO. 5883, ON 12/21/93 FOR CONSTRUCTION DRAWINGS FOR GROUP 6 INTERSECTION IMPROVEMENTS, C.I.P. 077. THE PLANS ARE ON FILE WITH THE CITY OF COLUMBUS DIVISION OF ENGINEERING AND CONSTRUCTION, DRAWING 1476-E.

BASIS OF BEARINGS FROM FRANKLIN COUNTY ENGINEER'S MONUMENTS #0013, #1143 AND #1142.



*David E. Slagle*

|  |             |            |
|--|-------------|------------|
| <b>GROUP 6 INTERSECTION IMPROVEMENTS<br/>C.I.P. NO. 077</b>                            |             |            |
| <b>DYNOTEC, INC.</b><br>2700 E. DUBLIN-GRANVILLE ROAD, SUITE 6<br>COLUMBUS, OHIO 43231 |             |            |
| DATE: 11/08/95   | DWG NO. WD3 | DRAWN: RJS |
| SCALE: 1" = 60'  | CHECKED:    |            |

11/11/95  
183 06 850  
0-23-C