

83826925

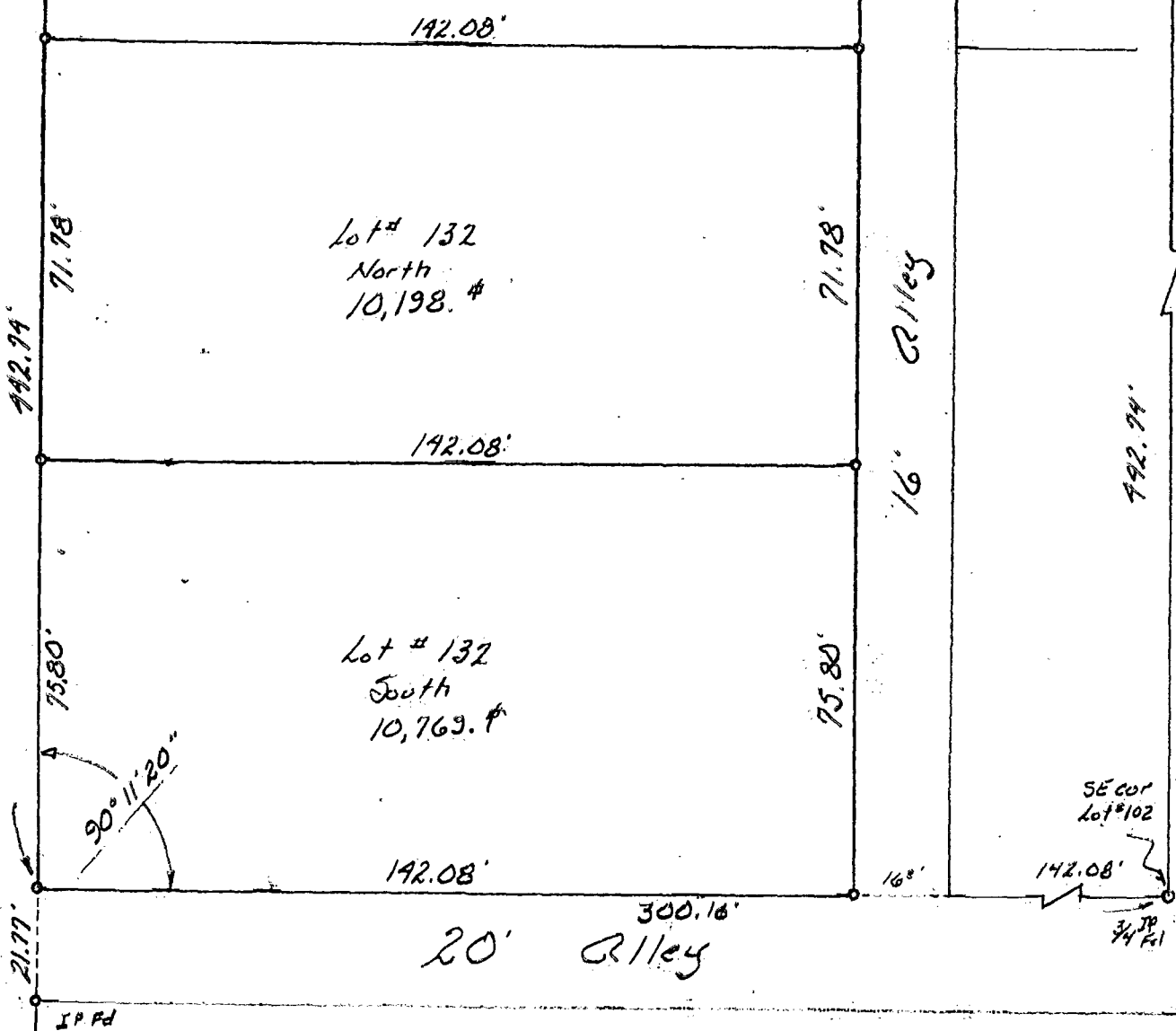
J E Fairwood Avenue



1/2" IP Fd  
NW cor  
Lot # 130

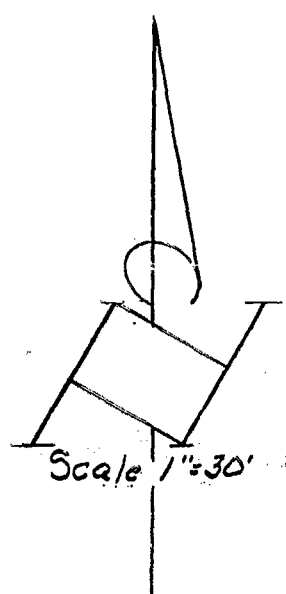
300.16'

IP Fd  
NE cor  
Lot # 104



Survey and Division  
 of lot # 132 in Opportunity Farms Add'n.  
 PB. 15 Pg. 28. in the City of Columbus,  
 Franklin County, Ohio: for

Kathryn Thomas



**LOUIS F. HAINES**  
 SURVEYOR  
 354 KESSLER ST. Phone 837-2181  
 GROVEPORT, OH. 43125

I hereby certify that the plat shown hereon was prepared from an actual field survey, under my supervision and that said plat correctly represents said survey.

DATE: April 8, 1987. SIGNED: Louis F. Haines