

SURVEY OF ACREAGE PARCELS

LOCATED SECTION 16, TOWNSHIP 4, RANGE 22, CONGRESS LANDS
CITY OF COLUMBUS, COUNTY OF FRANKLIN, STATE OF OHIO

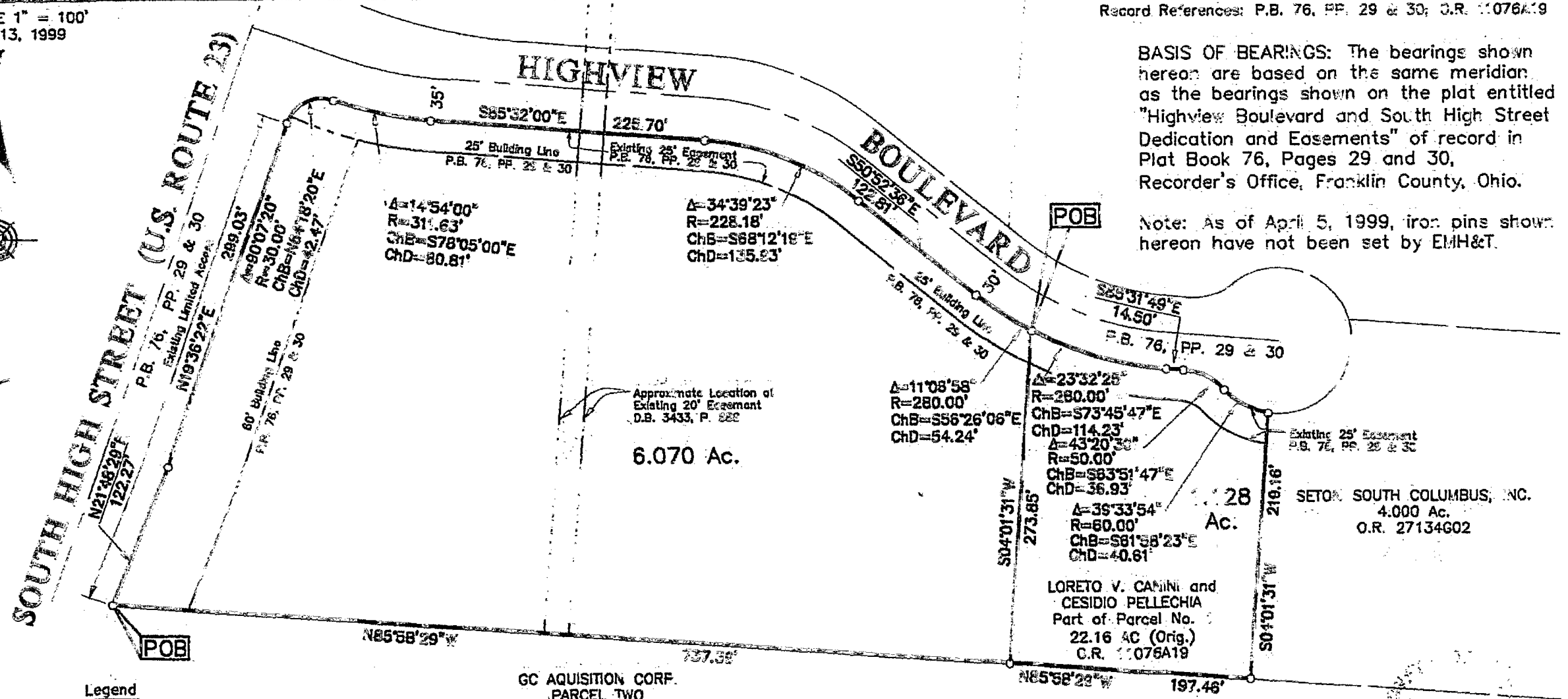
SCALE 1" = 100'
April 13, 1999



Record References: P.B. 76, PP. 29 & 30; C.R. 1076A19

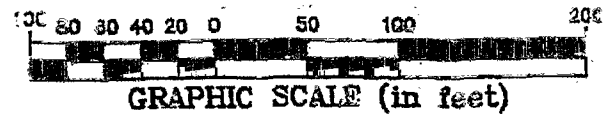
BASIS OF BEARINGS: The bearings shown hereon are based on the same meridian as the bearings shown on the plat entitled "Highview Boulevard and South High Street Dedication and Easements" of record in Plat Book 76, Pages 29 and 30, Recorder's Office, Franklin County, Ohio.

Note: As of April 5, 1999, iron pins shown hereon have not been set by EMH&T.



Legend
o = Iron pin to be set
(30" long with cap
inscribed EMH&T)

GC AQUISITION CORP.
PARCEL TWO
17.334 AC.
O.R. 2462808



LORETO V. CANINI and
CESIDIO PELLECHIA
Part of Parcel No.
22.16 AC (Orig.)
C.R. 1076A19

SETON SOUTH COLUMBUS, INC.
4.000 Ac.
O.R. 27134G02

EMH&T, INC.

By *[Signature]*
Professional Surveyor No. 3561