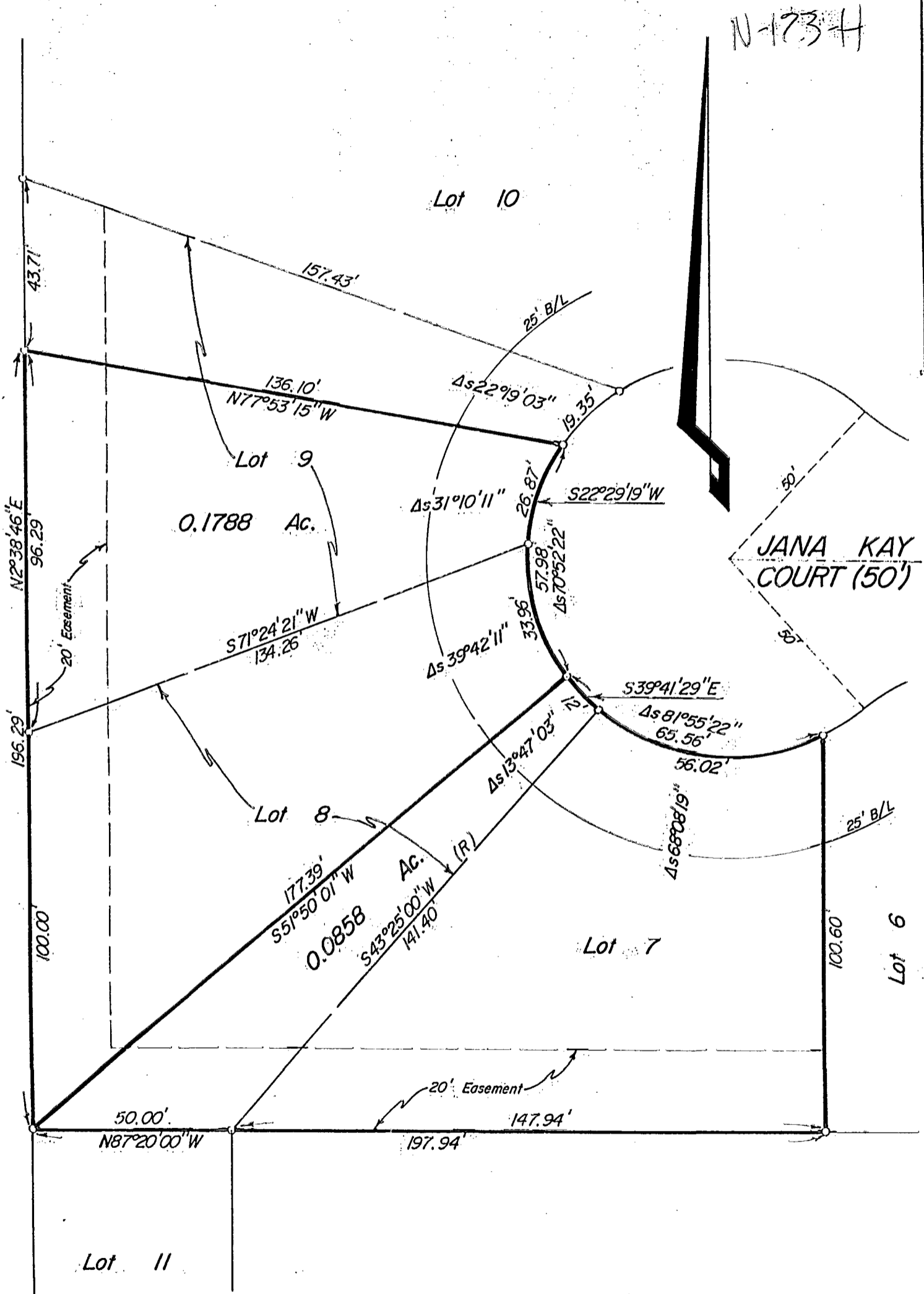


SCALE: 1" = 30'

○ = IRON PIN

APRIL 22, 1988

RECORD REFERENCES: P.B. 55, Pg. 26



We hereby declare that the foregoing plat was prepared from an actual survey of the premises and shows the location of the boundary

E.M.H.&T. INC.  
 By *John W. Cybulski*  
 Professional Surveyor No. 5485