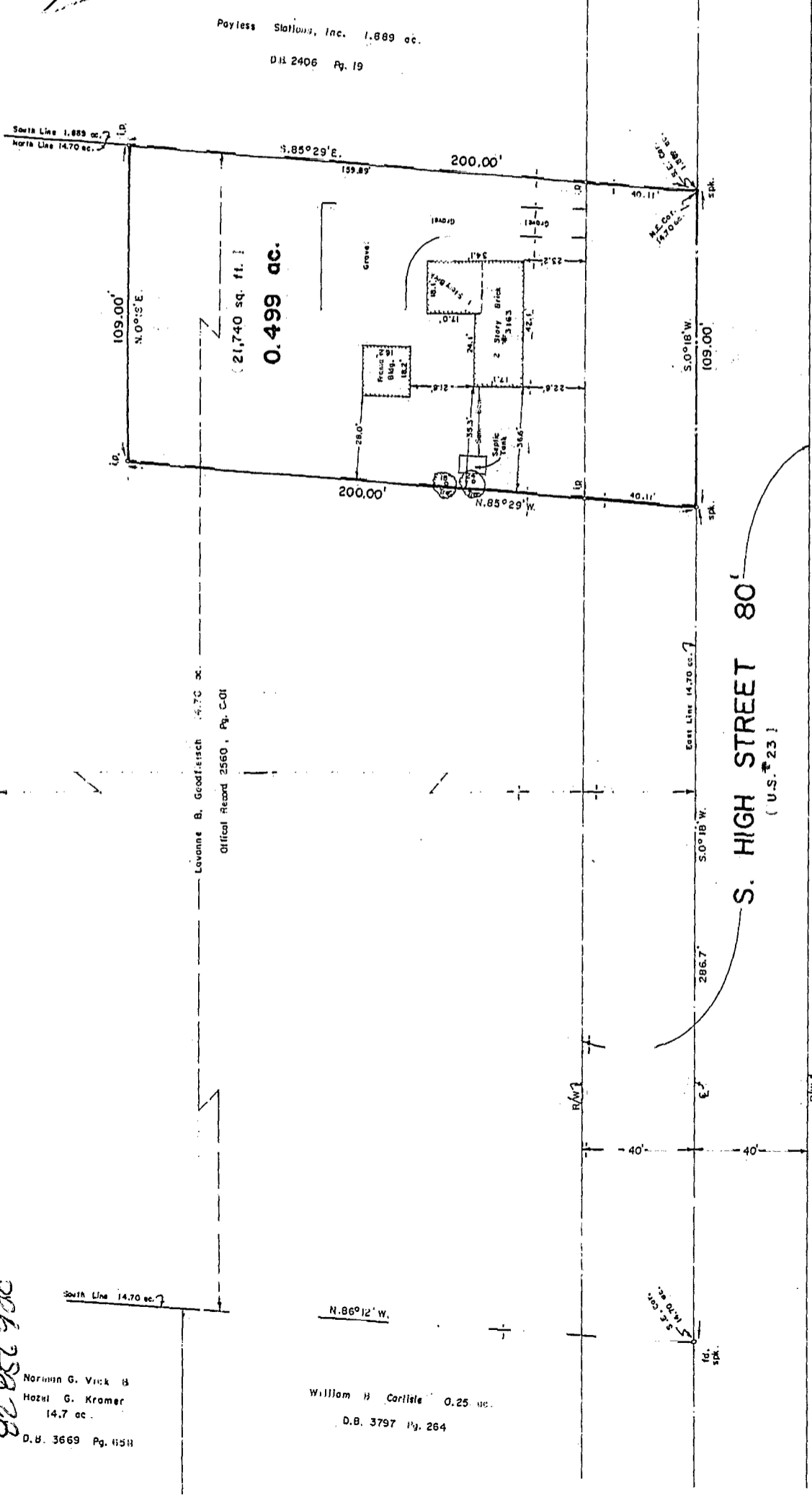


MARICK TWP.
0-55-4



90-252-930
Norman G. Vick &
Hazel G. Kramer
14.7 ac.
D.B. 3669 Pg. 45B

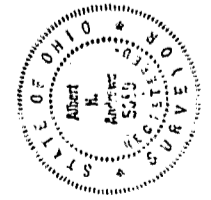
William H. Carlisle 0.25 ac.
D.B. 3797 Pg. 264

Lavonne B. Goodfleisch 14.70 ac.
Official Record 2560, Pg. C-01

Payless Station, Inc. 1.889 ac.
D.B. 2406 Pg. 19

S. HIGH STREET 80'
(U.S. #23)

I hereby certify that the foregoing plat represents a true return of survey made by me in May 1983. Iron Pins set are 1" x 30" unless otherwise noted. Basis of the bearings shown are from the right-of-way plans of South High Street (U.S. #23) on file at The State of Ohio Department of Transportation, Division 6, Delaware, Ohio.



Albert H. Anderson
Myers Surveying Company
Civil Engineers & Surveyors
Bexley, Ohio 43209
Phone - (614-235-8677)

Scale 1" = 30'
May 24, 1983

FOR
MR. TIM KELLY