

69 119A
69 119.5

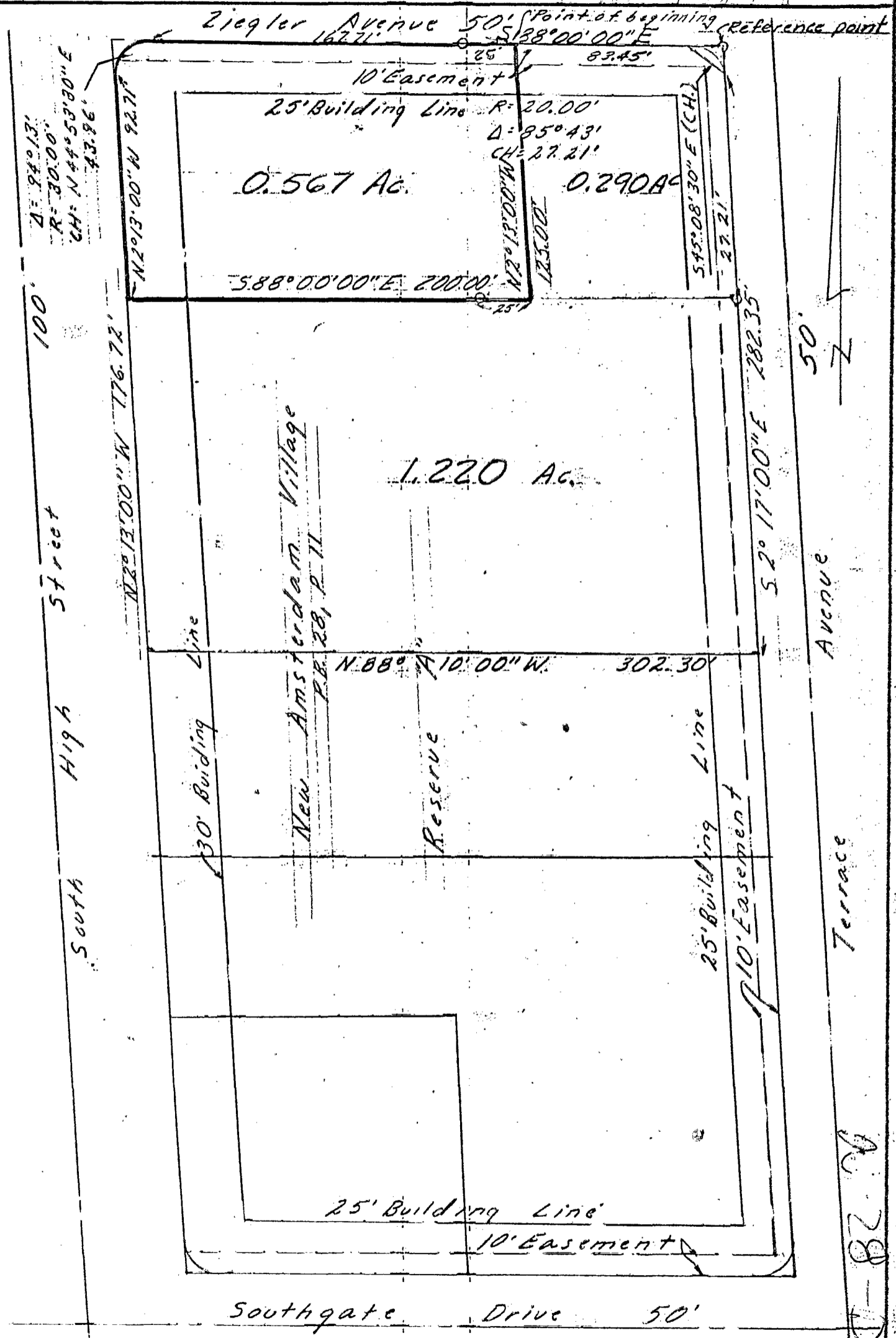
HOCKADEN-LIPES-ROUSCULP, INC.
CONSULTING ENGINEERS
2607 1/2 N. HIGH ST.
COLUMBUS, OHIO

187.85 69.25

N 2 35 - 1)

Vol. 13 Page 9

7-82-1



We hereby certify that the foregoing plat was prepared from an actual survey of the premises.

SCALE 1" = 60'

DATE: 11/21/69	27161
REVISED DATES	ORDER NUMBERS
11/29/69	
11/24/69	
11/24/69	27297

HOCKADEN-LIPES-ROUSCULP, INC.

CURV'D.	DRAWN	CHECKED
JD	REW	WM

By *William L. Merchant*
Registered Surveyor

7-82-1