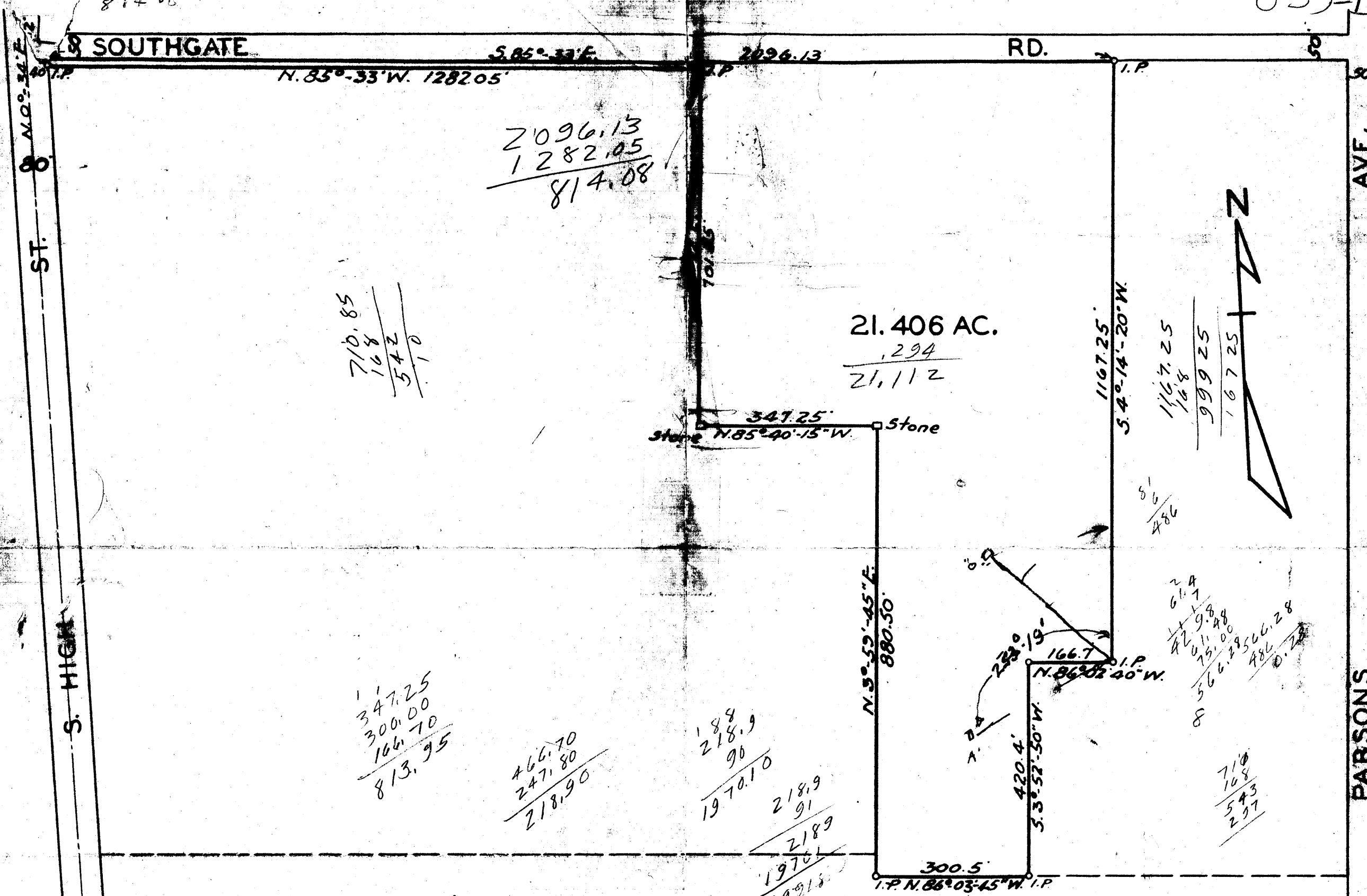


0-55-D



SCALE: 1 IN. = 200 FT.

DEC. 1, 1947.

PLAT OF
 SURVEY
 OF
 21.406 ACRE TRACT
 MARION TOWNSHIP FRANKLIN COUNTY OHIO

SURVEYED AND PLATTED
 BY
John L. Statmiller
 REGISTERED SURVEYOR
 FOR
 JOHN KRAMER