

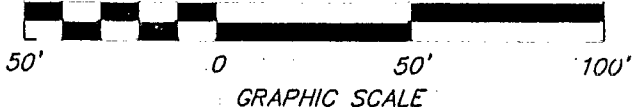
RIGHT-OF-WAY DROP 86856,850
 RESERVE "A" HIGH MEADOW ADDITION
 CITY OF GROVE CITY, FRANKLIN COUNTY, OHIO

86856,850

SCALE 1" = 50'

JUNE 1, 1999

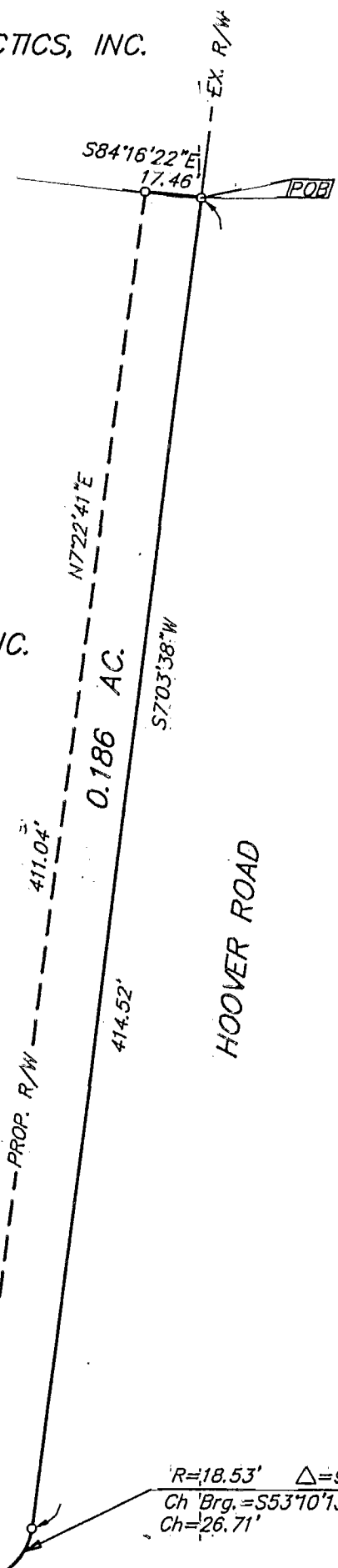
RECORD REFERENCES: P.B. 28, PG. 29
 D.B. 2579, PG. 208



STRATEGIC INVESTMENT TACTICS, INC.
 0.684 AC.
 INST. 199707020037185

RESERVE "A"
 HIGH MEADOW ADDITION
 P.B. 28, PG. 29

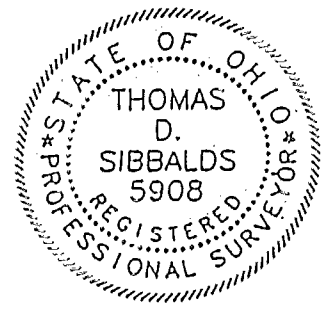
SIMEON ENTERPRISES, INC.
 3.87 AC.
 D.B. 2579, PG. 208



R=20.00' Δ=96°41'50"
 Ch Brg.=N55°43'36"E
 Ch=29.89'

R=18.53' Δ=92°13'10"
 Ch Brg.=S53°10'13"W
 Ch=26.71'

R=275.00' Δ=4°47'43"
 Ch Brg.=N78°19'21"W
 Ch=23.01'



DARTMOOR ROAD

HOOVER ROAD

o = I.P. SET
 I.P.s Set are 13/16" I.D. Iron pipe W/ cap inscribed EMH&T.

E.M.H.&T. INC.

The Basis of Bearings for this description is North 7° 22' 41" East for the centerline of survey for Hoover Road as shown on the centerline survey plat for Hoover Road, Columbus Street/ Stringtown Road of record at the Engineer's Office, Franklin County, Ohio.

By: Thomas D. Sibbalds June 8, 1999
 Professional Surveyor No. 5908 Date

Grove City

M-86-G