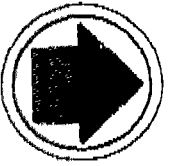


# M-E CIVIL ENGINEERING INC.

635 BROOKSEGE BOULEVARD  
WESTERVILLE, OHIO 43081  
PHONE (614) 818-4900  
FAX (614) 818-4901



NORTH

- IRON PIN SET (M-E ENG/S-6972)
- ⊗ RAILROAD SPIKE SET

RR PARTNERS  
O.R.V. 31014, PG. 003  
54,795 ACRES (ORIGINAL)

RR PARTNERS  
O.R.V. 35116, PG. 005  
2,314 ACRES

FUTURE  
TEMPLE WOERNER  
100' R/W

## PROPERTY SPLIT EXHIBIT

WASHINGTON

DUKE REALTY LIMITED PARTNERSHIP  
O.R.V. 35116, PG. 007  
23,800 ACRES

PLACE  
OF BEGINNING  
0.018 ACRE

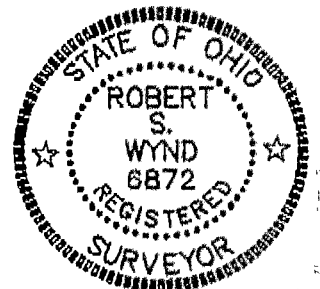
0.018 ACRE

0.013 ACRE

0.288 ACRE

0.013 ACRE

TRUE PLACE  
OF BEGINNING  
0.013 ACRE



BY *[Signature]* 6872  
REGISTERED SURVEYOR No.

DATE 6/2/97	973008
REVISED DATES	JOB NUMBERS

SCALE 1" = 100'

SURV'D	DRAWN	CHECKED
EM	DC	BW

BEARINGS SHOWN HEREON ARE BASED ON NORTH 70°11'03" EAST FOR RINGS ROAD AS SHOWN ON THE PLAT "TITTLE CROSSING NORTH" RECORDED IN PLAT BOOK 80, PAGE 38.

BEARING REFERENCE

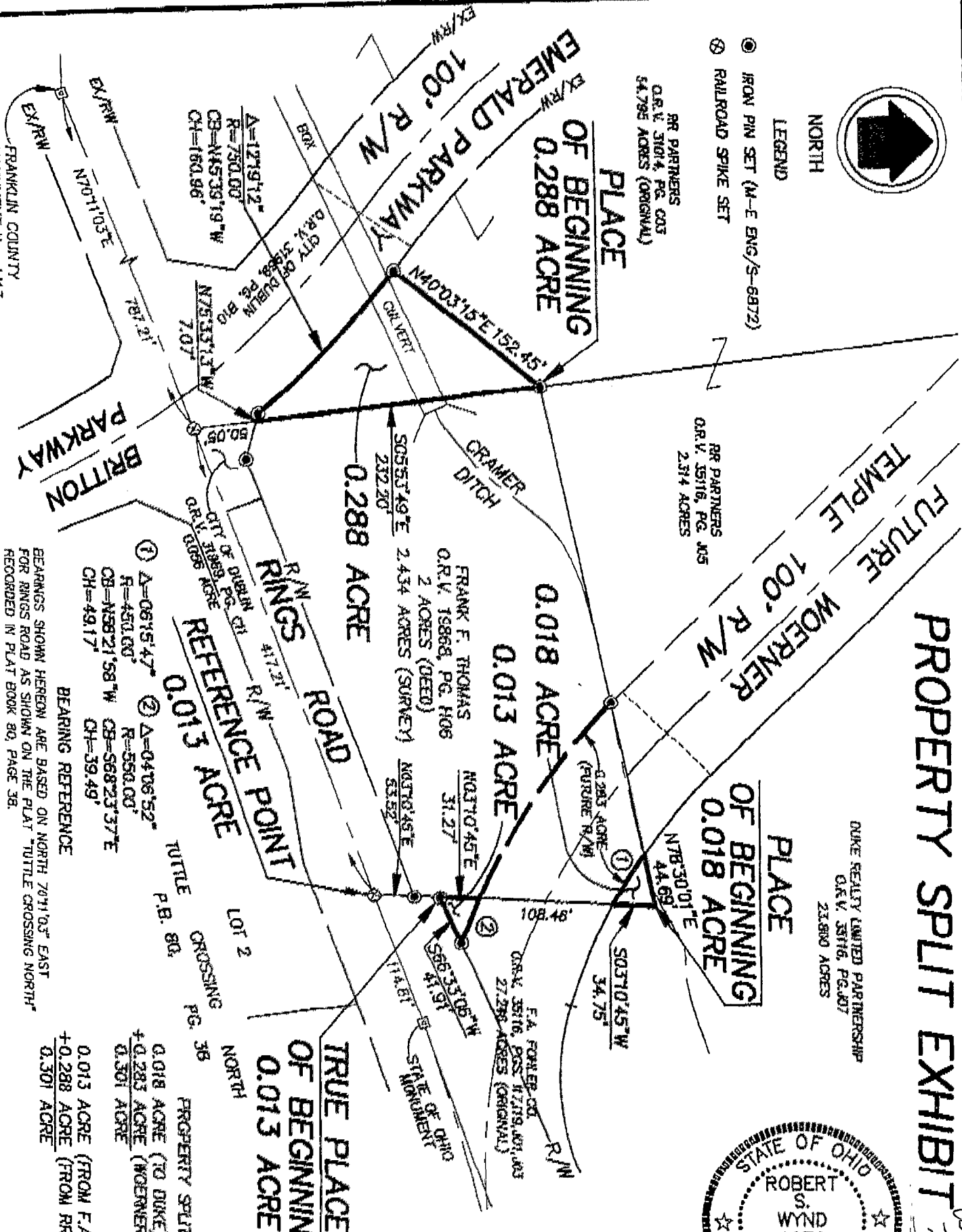
- ① Δ=06°15'47" R=450.00' CB=N59°21'58"W CH=49.17'
- ② Δ=04°06'52" R=550.00' CB=S68°23'37"E CH=39.49'

REFERENCE POINT  
RINGS ROAD  
417.21'

TITTLE CROSSING PG. 38

PROPERTY SPLITS

- 0.013 ACRE (TO DUKE)
- +0.283 ACRE (WOERNER-TEMPLE R/W)
- 0.301 ACRE
- 0.013 ACRE (FROM F.A. KOHLER)
- +0.288 ACRE (FROM RR PARTNERS)
- 0.301 ACRE



FRANKLIN COUNTY  
MONUMENT NO. 4413