

180606850
180856850

EXHIBIT "A"

SURVEY OF 0.202 ACRE TRACT

LOCATED IN VIRGINIA MILITARY SURVEY NO. 1388
City of Grove City, Franklin County, Ohio

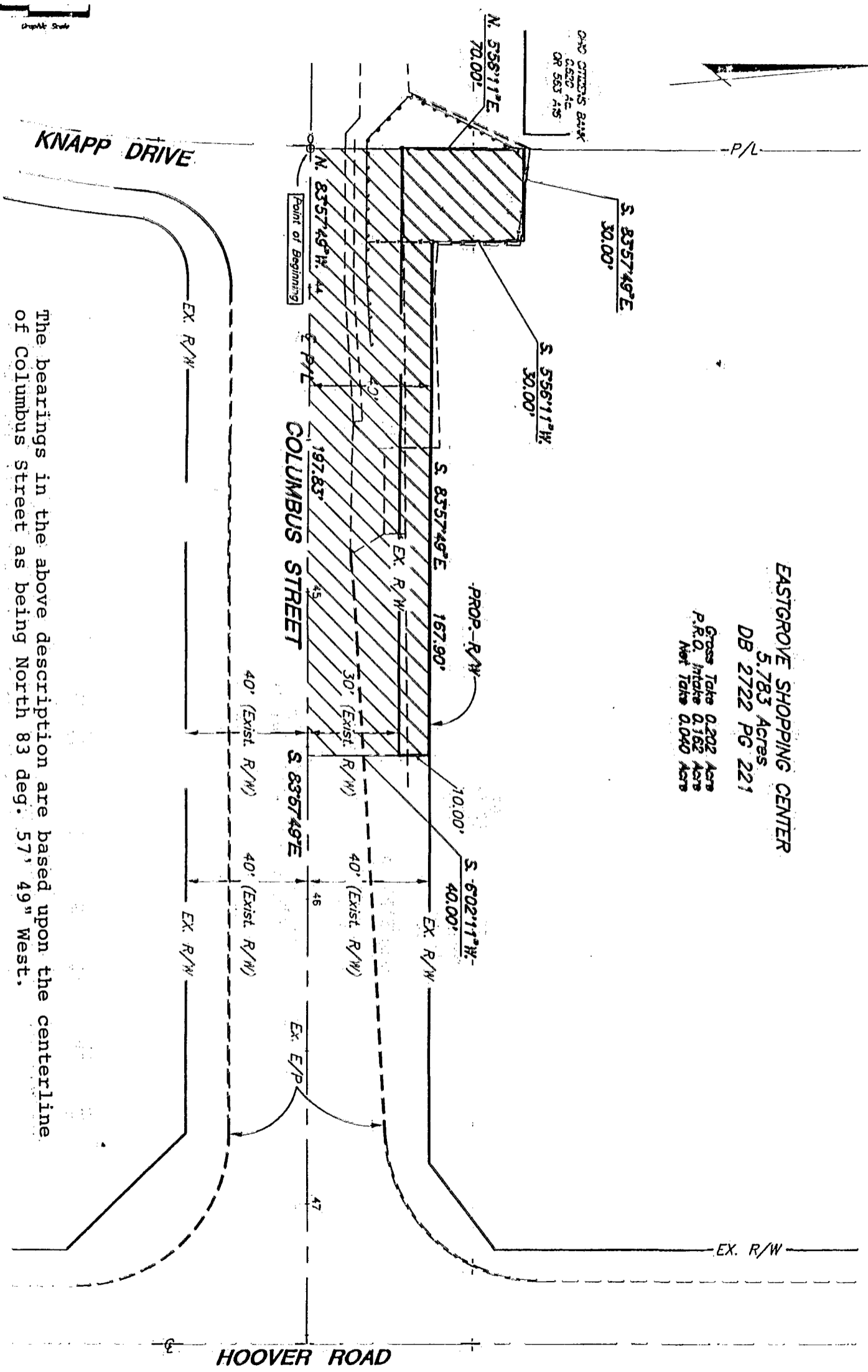
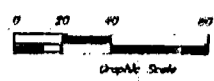
CONSULTING ENGINEERS & SURVEYORS
EVANS, MECHWART, HAMBLETON & TILTON, INC.

SCALE: 1" = 40'

○ - Iron Pin

June, 1993

Record Reference No. _____



EASTGROVE SHOPPING CENTER
 5.783 Acres
 DB 2722 PG 221
 Gross Take 0.202 Acre
 P.R.O. Interest 0.162 Acre
 Net Take 0.040 Acre

The bearings in the above description are based upon the centerline of Columbus Street as being North 83 deg. 57' 49" West.

M-9C-1A

EVANS, MECHWART, HAMBLETON & TILTON, INC.
 BY *Lawrence E. Ball*
 LAWRENCE E. BALL
 PROFESSIONAL SURVEYOR NO. 6878