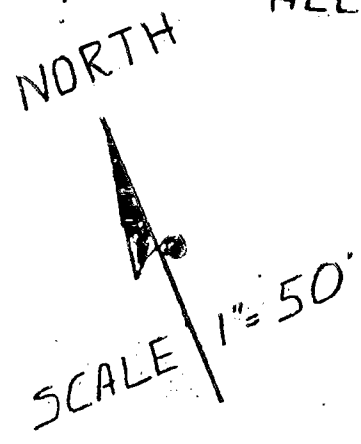


SURVEY OF 0.8145 AC. (3)

FOR

HELEN M. SCHOLCH & T. RICHARD BARBEE

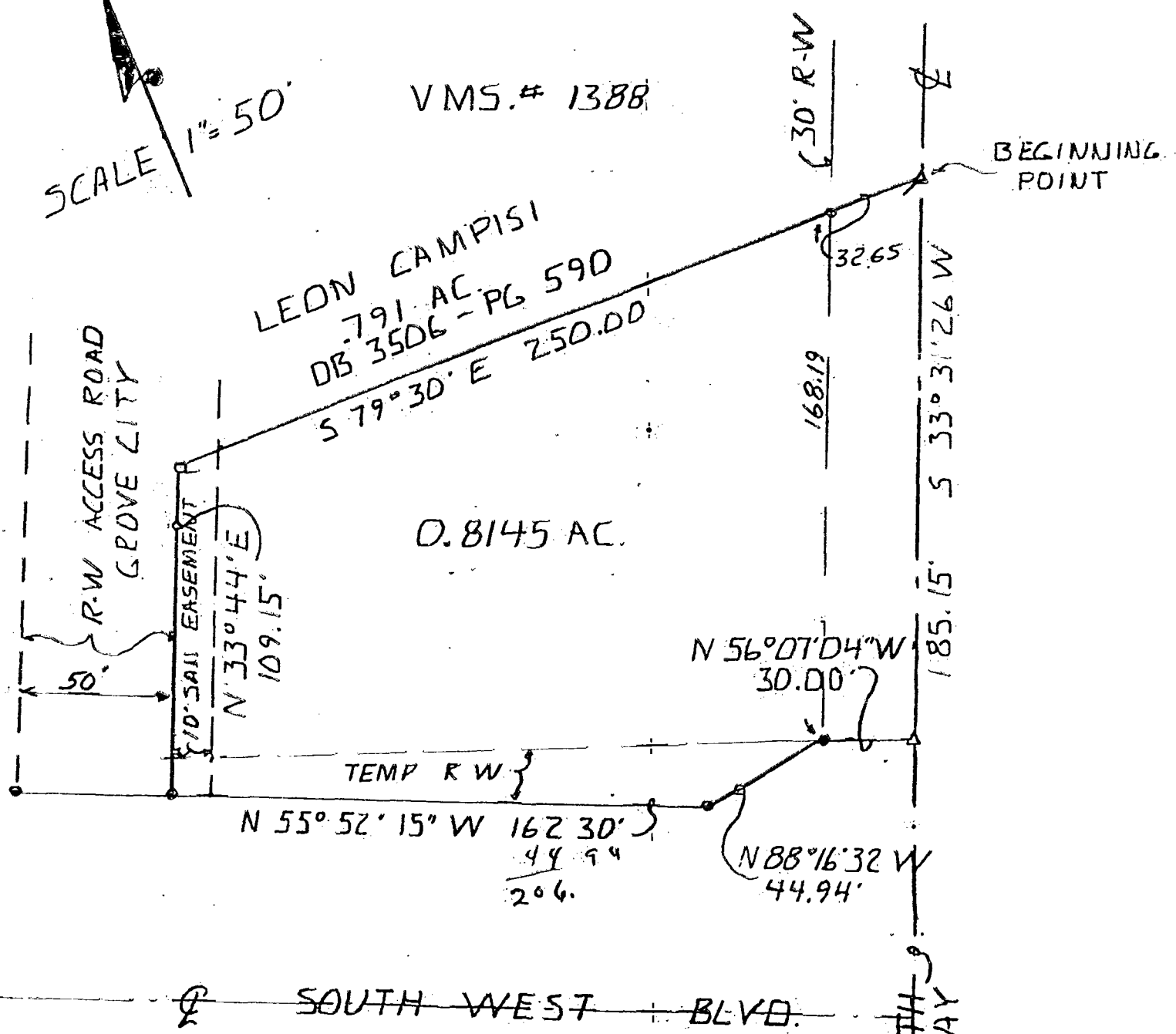
RW = 0.1204 AC.
LEAVING 0.6941 AC.



VMS.# 1388

LEON CAMPISI
0.791 AC.
DB 3506 - PG 590
S 79° 30' E 250.00'

0.8145 AC.



THIS PLAT WAS PREPARED FROM AN ACTUAL FIELD SURVEY
MADE BY PAUL K. MOORE & ASSOCIATES ON NOVEMBER 5, 1979,
AND REPRESENTS THE PREMISE SHOWN HEREON.

SIGNED AT REYNOLDSBURG, OHIO, THIS 5th DAY OF NOVEMBER, 1979.

Paul K. Moore
PAUL K. MOORE, REGISTERED SURVEYOR NO. 5883

NORTH BROADWAY

JACKSON TWP
C-31-D

05576825