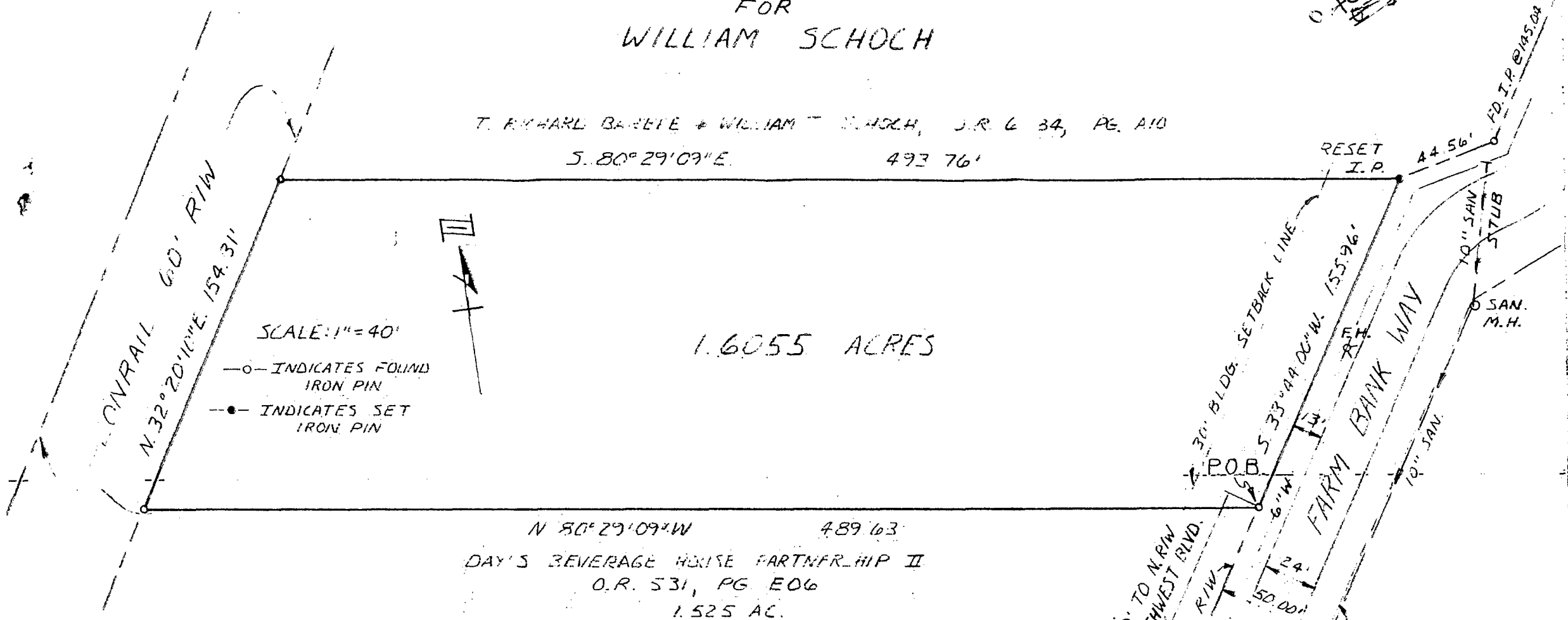


80356875

SURVEY OF 1.6055 ACRES FOR WILLIAM SCHOCH

C-31-D
0-10-5821 JACKSON Twp.

T. EDWARD BARRETT & WILLIAM SCHOCH, J.R. 6 34, PG. A10
S. 80° 29' 09" E. 493.76'



1.6055 ACRES

SCALE: 1" = 40'

- INDICATES FOUND IRON PIN
- INDICATES SET IRON PIN

N 80° 29' 09" W 489.63'
DAY'S BEVERAGE HOUSE PARTNERSHIP II
O.R. 531, PG. E06
1.525 AC.

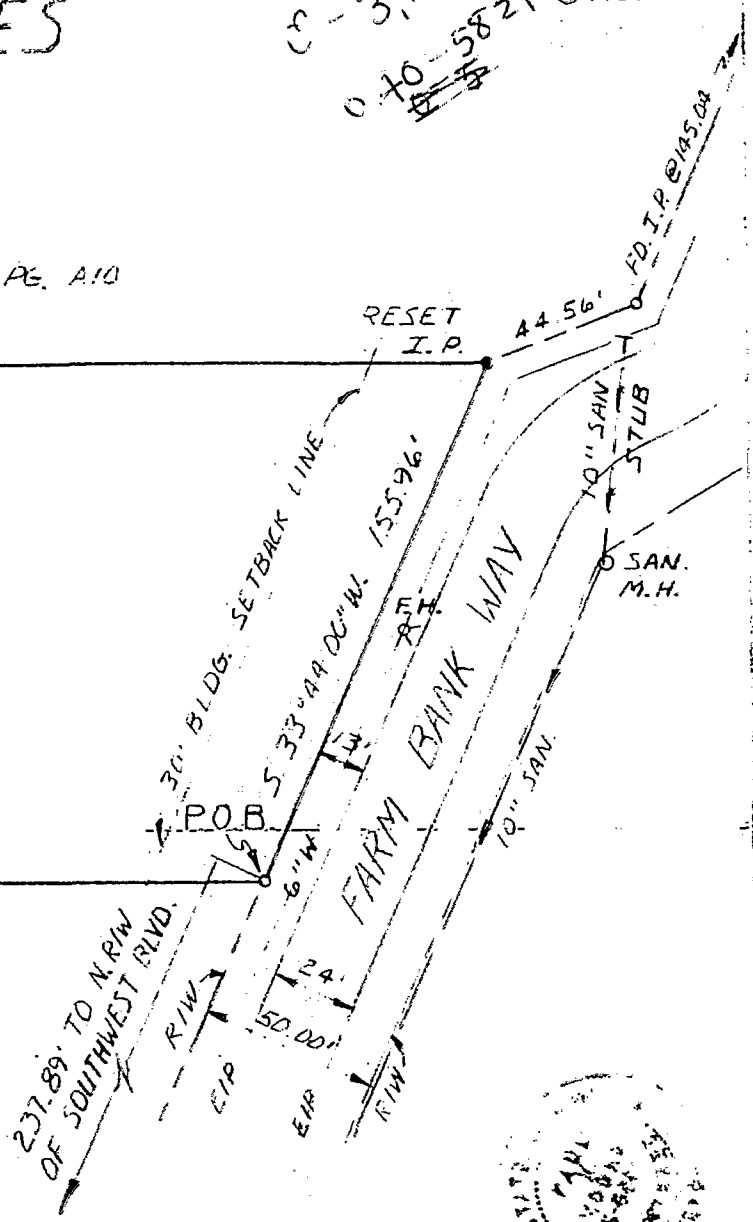
SITUATED IN THE CITY OF GROVE CITY, JACKSON TOWNSHIP, FRANKLIN COUNTY, OHIO, BEING A PART OF V.M.S. NO. 1388, AND BEING 1.6055 ACRES CUT OF A 7.198 ACRE TRACT DESCRIBED IN O.R. 6284, PG. A10, FRANKLIN COUNTY RECORDER'S OFFICE.

STREET AND UTILITY INFORMATION OBTAINED FROM IMPROVEMENT PLANS OF FARM BANK WAY, DATED (REVISED) 10-23-84, PREPARED FOR CITY OF GROVE CITY.

THIS DRAWING WAS PREPARED FROM AN ACTUAL FIELD SURVEY MADE BY PAUL K. MOORE & ASSOCIATES ON January 23rd 1986 AND REPRESENTS THE PREMISES AS SHOWN HEREON TO THE BEST OF OUR KNOWLEDGE.

SIGNED AT REYNOLDSBURG, OHIO THIS 28th DAY OF Jan 1986.

Paul K. Moore
PAUL K. MOORE, REGISTERED SURVEYOR NO. 5883



PAUL K. MOORE & ASSOCIATES
6515 E. LIVINGSTON AVE.
SUITE 11 BLACKLICK PLAZA