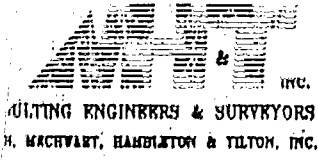


18060 6850

EXHIBIT "A"

M-90-A



SURVEY OF 0.027 ACRE TRACT

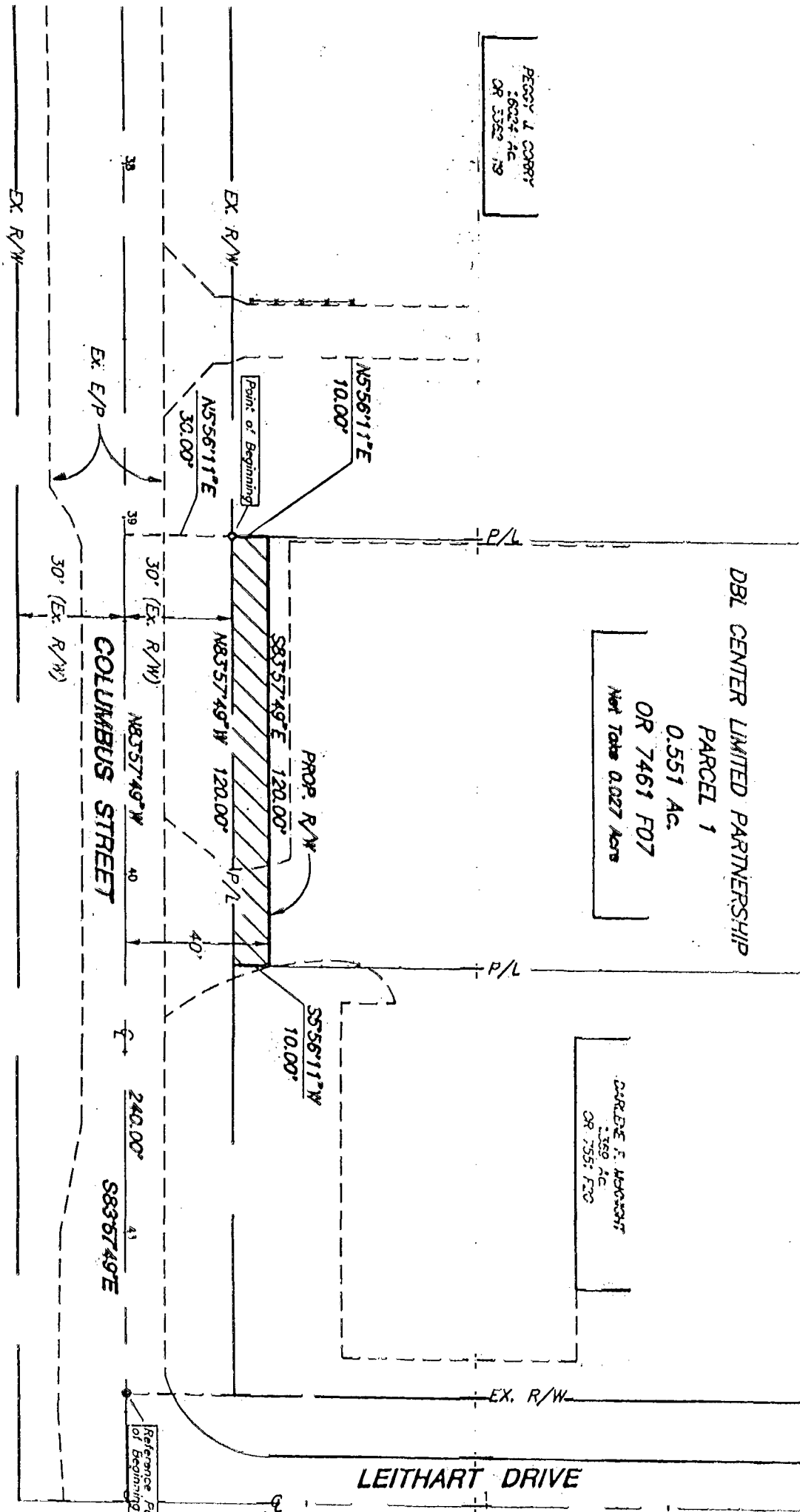
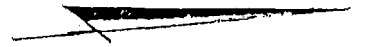
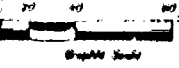
LOCATED IN VIRGINIA MILITARY SURVEY NO. 1388
City of Grove City, Franklin County, Ohio

SCALE: 1" = 40'

o = Iron Pin

June, 1993

Record Reference No. _____



PEGGY L. COBBY
26024 AC
OR 3352 79

DBL CENTER LIMITED PARTNERSHIP
PARCEL 1
0.551 AC.
OR 7461 F07
Net Total 0.027 Acre

CHARLES F. HANCOCK
1359 AC
OR 7551 F20

The BEARINGS ARE based upon the
Northernly line of Columbus St. as being
North 83 deg 57' 49" west

EVANS, MEGHWART, HAMBLETON & TILTON, INC.
Lawrence E. Hall
LAWRENCE E. HALL
PROFESSIONAL SURVEYOR NO. 6978

M-90-A