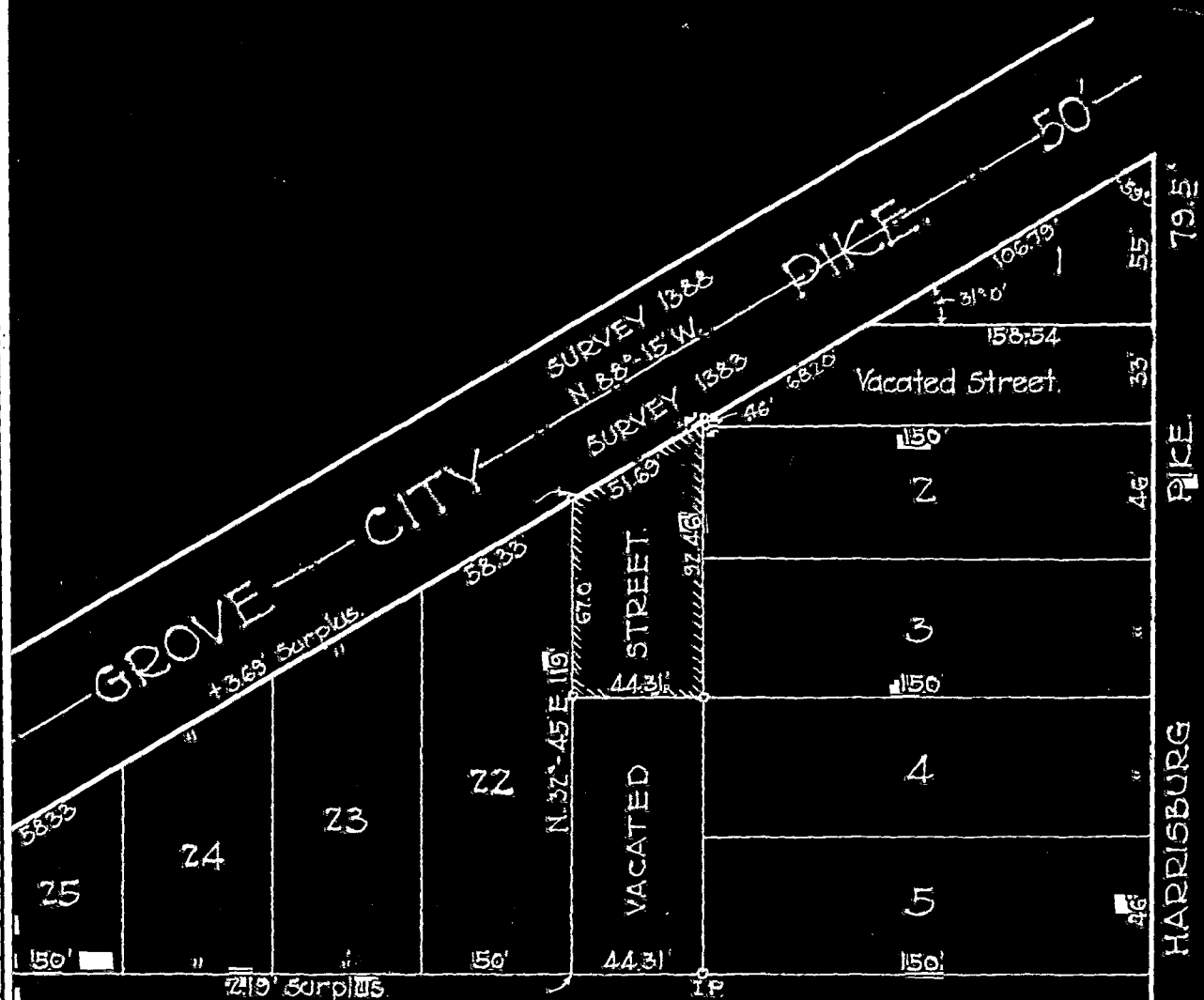


M-91

1880 120 1000 1-9 030



Note - A surplus of 1350 feet was found to exist from S.W. corner Lot 22 to S.E. cor. Lot 5 and was distributed as occupancy has existed since plat was laid out. This survey was mutually agreed to by present owners and future surveys should be governed accordingly.

C. E. Hecker

FOR - LOUIS R. PIEBLE

DRAWN	CHECKED
REH	REH



PLAT N. 1-9