

M-89
S. 55°00'E.

GLENN LOTZ
RESERVE

Recorded in Recorder's Plat Bk. 17, Pg. 356, 357

Hse. #3512 Flossie A. Lotz
D.B. 2873, p. 474

Existing
2 Car
Conc. Blk
& Spucco
Garage

0.0575^{ac}
(2505 sq. ft.)

75' SUBDIVISION
S. line of Res. A

N. 55°06'45" W. 73.04'

S. 55°06'45" E. 88.00'

S. line of Reserve A

S. 55°00'E. 212.0'

162.5'

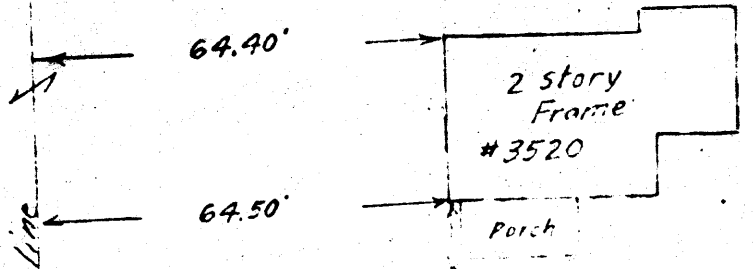
S. line of Res. A

S. 55°00'E. 8.42'

Job No 71-164

Robt. E. &
Edith M. Salts
0.162^{ac}
D.B. 2367, p. 359

Georgia L.
Wyker
0.53^{ac}



0.2869^{ac}
(12,500 sq. ft.)

6 1410
754
2869
4641

B. U. Roach & Wm. F. Co.
total = 0.751^{ac} D.B. 2873, p. 474

295.98' N. 52°25'15" W.

N. 52°25'15" W. 95.66'

Joanne W. Roach
0.28^{ac}

Alan C. & Barbara A.
Wittman
0.186^{ac}

M-89

0.5890/081

Jenny L...

M-89