

# BAUER, DAVIDSON & MERCHANT, INC.

CONSULTING ENGINEERS

255 GREEN MEADOWS DRIVE SOUTH WESTERVILLE, OHIO 43081

PHONE: 614-846-3393

FAX: 614-846-4575

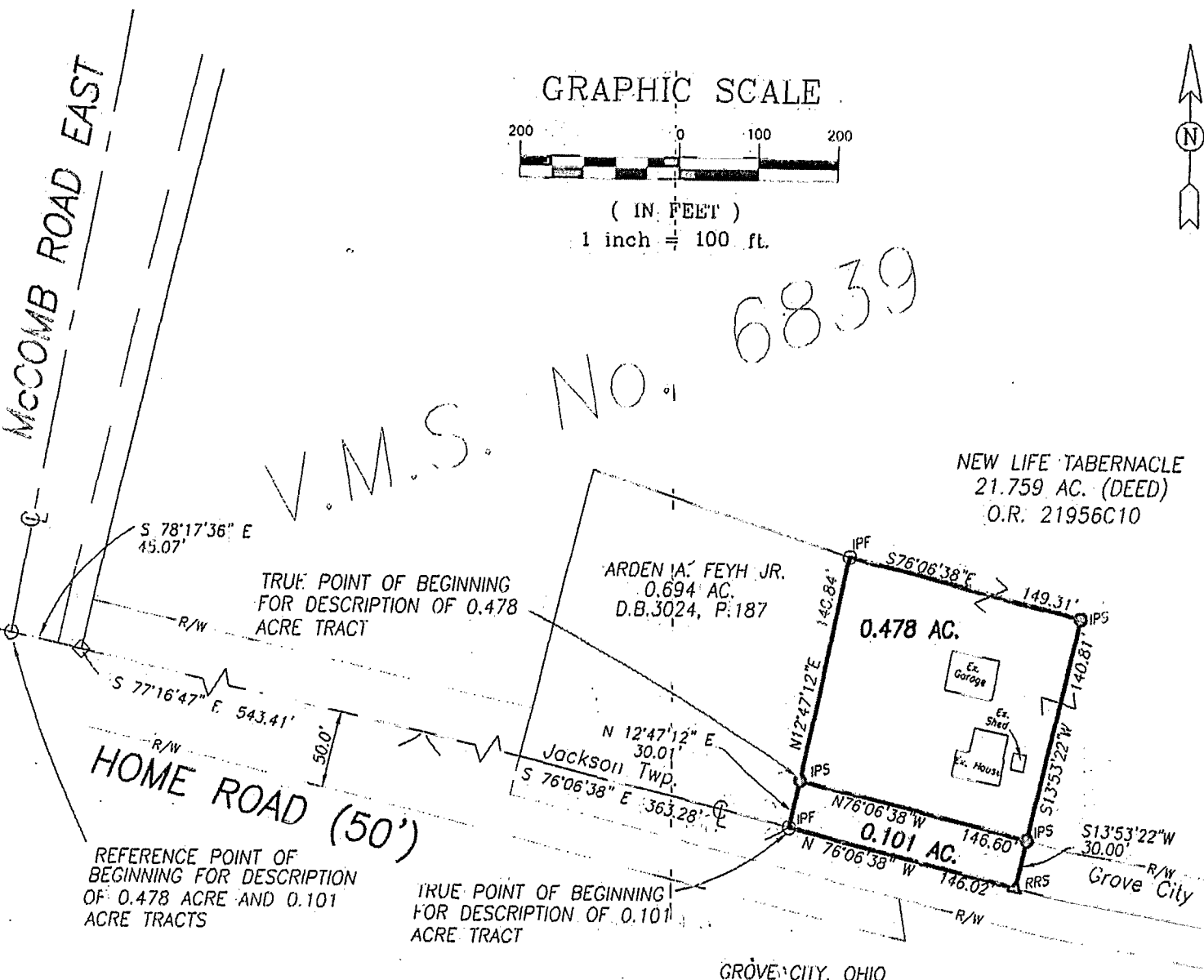
BOUNDARY SURVEY OF A 0.478 ACRE TRACT OF LAND AND  
A 0.101 ACRE TRACT OF LAND LOCATED ON THE NORTH  
SIDE OF HOME ROAD, EAST OF McCOMB ROAD E. AND SOUTH  
OF INTERSTATE 270, IN THE CITY OF GROVE CITY  
COUNTY OF FRANKLIN, STATE OF OHIO

## GRAPHIC SCALE



( IN FEET )

1 inch = 100 ft.



V.M.S. NO. 6839

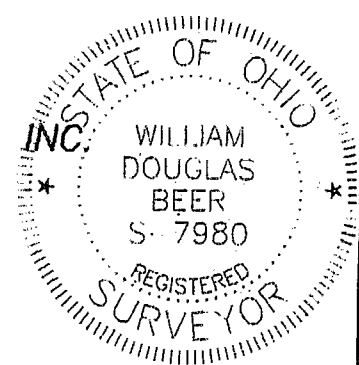
Situated in the State of Ohio, County of Franklin, City of Grove City, being in Virginia Military Survey No. 6839, containing 0.478 acre and 0.101 acre of land more or less, said tracts of land being part of that 21.759 acre tract of land described in the deed to New Life Tabernacle, of record in Official Record 21956C10, Recorder's Office, Franklin County, Ohio.

We hereby state that the above map was prepared from information obtained from an actual field survey conducted by Bauer, Davidson & Merchant, Inc. in January and August of 2002.

The bearings shown on this map are based on the bearing of N 77°16'47" W, as given for the centerline of Home Road in Official Record 21956C10, Recorder's Office, Franklin County, Ohio.

**BAUER, DAVIDSON & MERCHANT, INC.**  
CONSULTING ENGINEERS

BY William D. Beer  
William D. Beer  
Professional Surveyor No. 7980



AUGUST 21, 2002  
ORDER NO. 1069-01

0-32-A Twp. Jackson